

LOC/DME I-PVY <b>111.55</b> Chan <b>52(Y)</b>	APP CRS <b>238°</b>	Rwy Idg <b>9000</b> TDZE <b>780</b> Apt Elev <b>799</b>
---	------------------------	---

# ILS RWY 24R (SA CAT I)

CLEVELAND-HOPKINS INTL (CLE)

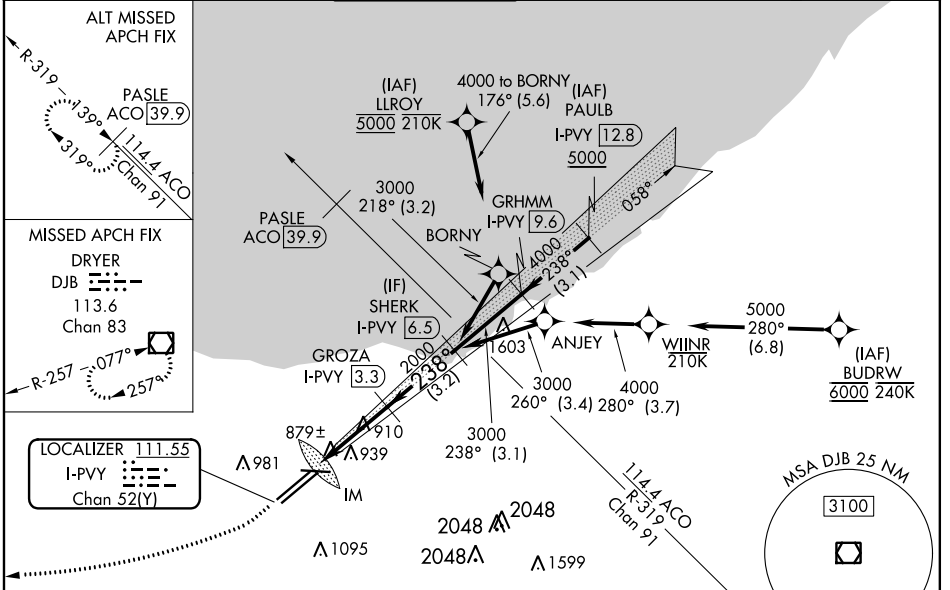
DME required. Aircraft not DME/DME/IRU or GPS equipped - RADAR required for procedure entry. RNAV 1. From LLROY and BUDRW: RNAV 1-DME/DME/IRU or GPS required for procedure entry.

Requires specific OPSPEC, MSPEC, or LOA approval and use of HUD to DH. Simultaneous approach authorized. Simultaneous operations require use of vertical guidance; maintain last assigned altitude until established on glideslope.

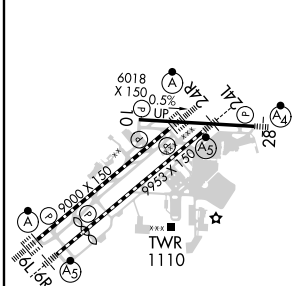
ALSF-2

MISSED APPROACH: Climb to 1700 then climbing right turn to 3000 direct DJB VOR/DME and hold.

D-ATIS ARR <b>127.85</b> DEP <b>132.375</b>	CLEVELAND APP CON <b>124.0 346.325</b>	CLEVELAND TOWER <b>124.5 273.45</b>	GND CON <b>121.7 273.45</b>	CLNC DEL <b>125.05 273.45</b>	CPDLC
---	---	--	--------------------------------	----------------------------------	-------



ELEV 799	D	TDZE 780
----------	---	----------



CATEGORY	A	B	C	D
S-ILS 24R	RA 150/14 150 DA 930			

## SA CATEGORY I ILS - SPECIAL AIRCREW & AIRCRAFT CERTIFICATION REQUIRED

REIL Rwy 10  
TDZ/CL Rwy 6L, 6R, 24L and 24R  
HIRL Rws 6L-24R, 6R-24L and 10-28

EC-2, 25 MAR 2021 to 22 APR 2021

EC-2, 25 MAR 2021 to 22 APR 2021