

LOC/DME I-HPI 109.9 Chan 36	APP CRS 238°	Rwy ldg TDZE 9956 786 Apt Elev 799
---	------------------------	---

ILS RWY 24L (SA CAT II)

CLEVELAND-HOPKINS INTL (CLE)

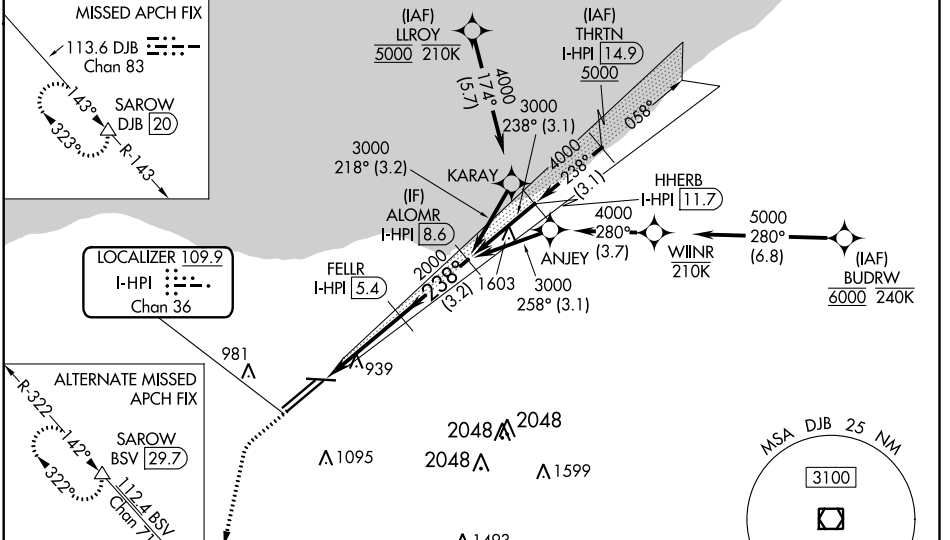
DME required. Aircraft not DME/DME/IRU or GPS equipped - RADAR required for procedure entry. RNAV 1. From LLROY and BUDRW: RNAV 1-DME/DME/IRU or GPS required for procedure entry.

MALSRL

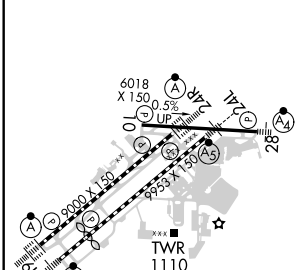
MISSED APPROACH: Climb to 1300 then climbing left turn to 3000 on heading 200° and DJB VOR/DME R-143 to SAROW/DJB 20 DME and hold.

Simultaneous approach authorized. Simultaneous operations require use of vertical guidance; maintain last assigned altitude until established on glideslope. Reduced lighting: requires specific OPSPEC, MSPEC, or LOA approval and use of autoland or HUD to touchdown.

D-ATIS ARR 127.85 DEP 132.375	CLEVELAND APP CON 124.0 364.325	CLEVELAND TOWER 124.5 273.45	GND CON 121.7 273.45	CLNC DEL 125.05 273.45	CPDLC
---	---	--	--------------------------------	----------------------------------	-------



ELEV 799	D	TDZE 24L 786
----------	----------	--------------



1300	3000	SAROW DJB R-143	VGSi and ILS glidepath not coincident (VGSi Angle 3.00/TCH 48).
↑	hdg 200°	△	
FELLR I-HPI 5.4		ALOMR I-HPI 8.6	
I-HPI 1.8		3000	
1021		3.2 NM	
3.7 NM		3.2 NM	
GS 3.00°	TCH 52		

CATEGORY	A	B	C	D
S-ILS 24L		RA 100/12	100 DA 886	

SA CATEGORY II ILS - SPECIAL AIRCREW & AIRCRAFT CERTIFICATION REQUIRED

REIL Rwy 10
TDZ/CL Rwys 6L, 6R, 24L, and 24R
HIRL Rwys 6L-24R, 6R-24L, and 10-28

EC-2, 25 MAR 2021 to 22 APR 2021

EC-2, 25 MAR 2021 to 22 APR 2021