

LOC/DME I-VOE <b>110.3</b> Chan 40	APP CRS <b>326°</b>	Rwy Idg TDZE Apt Elev	<b>7819</b> <b>335</b> <b>335</b>
--	------------------------	-----------------------------	---

# ILS or LOC/DME RWY 33

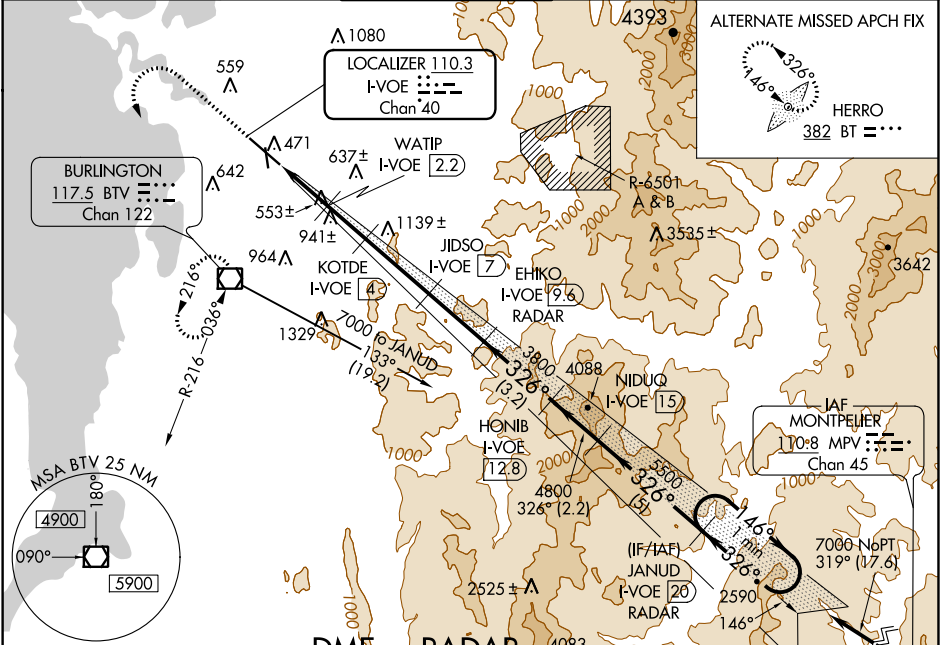
BURLINGTON INTL (BTV)

**⚠** Circling to Rwy 1 NA at night. Inoperative table does not apply to S-LOC 33 Cats C, D, and E. Inoperative table does not apply to S-ILS all Cats. Autopilot coupled approaches NA.

**⚠** -10°C

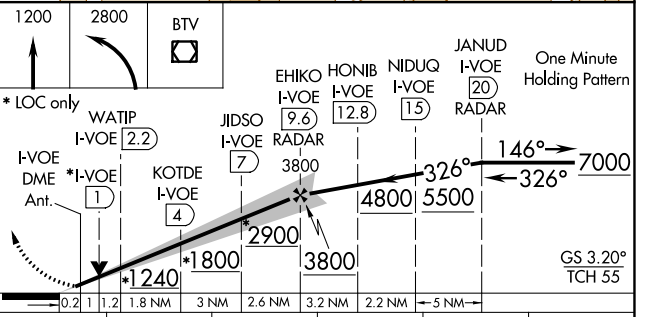
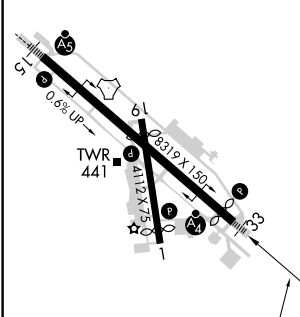
**MALSF** MISSED APPROACH: Climb to 1200 then climbing left turn to 2800 direct BTV VOR/DME and hold, continue climb-in-hold to 2800.

ATIS <b>123.8 269.9</b>	BURLINGTON APP CON * <b>121.1 278.8</b>	BURLINGTON TOWER * <b>118.3 (CTAF) 257.8</b>	GND CON <b>126.3 348.6</b>	CLNC DEL <b>119.15</b>	UNICOM <b>122.95</b>
----------------------------	--	---	-------------------------------	---------------------------	-------------------------



ELEV 335	<b>D</b>	TDZE 335
----------	----------	----------

## DME or RADAR REQUIRED



MIRL Rwy 1-19 HIRL Rwy 15-33	FAF to MAP 9.8 NM
Knots	60 90 120 150 180
Min:Sec	9:48 6:32 4:54 3:55 3:16

CATEGORY	A	B	C	D	E
S-ILS 33	535/40 200 (200-¾)		585/50 250 (300-1)		NA
S-LOC 33	820/40 485 (500-¾)		820/60 485 (500-1¼)	820-1½ 485 (500-1½)	820-1¾ 485 (500-1¾)
<b>C</b> CIRCLING	840-1 505 (600-1)	860-1 525 (600-1)	1200-2½ 865 (900-2½)	1380-3 1045 (1100-3)	

NE-1, 25 MAR 2021 to 22 APR 2021

NE-1, 25 MAR 2021 to 22 APR 2021