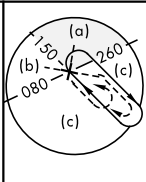
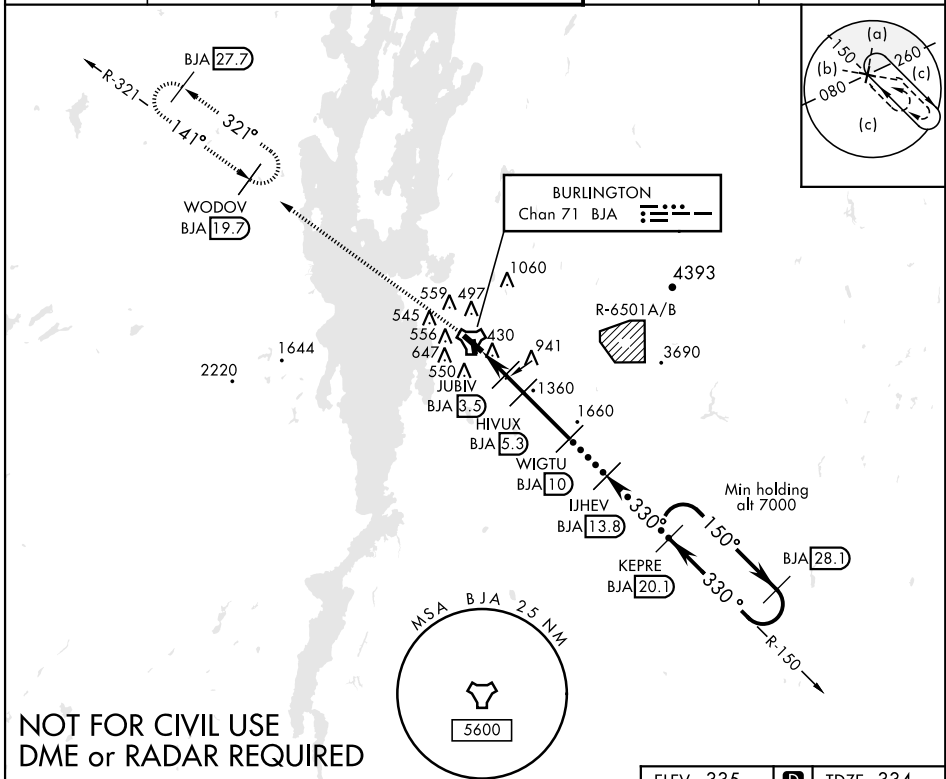


HI-TACAN RWY 33

TACAN BJA Chan 71	APCH CRS 330°	Rwy ldg TDZE Arpt Elev 7819 334 335	JAL-70 [USAF]	BURLINGTON INTL (KBTV)	
Night Landing Rwy 1 NA			MALSF A4	MISSED APPROACH: Climb to 8000 direct WODOV/BJA 19.7 DME and hold, continue climb-in-hold to 8000	
ATIS 123.8 269.9	BURLINGTON APP CON 121.1 278.8	BURLINGTON TOWER★ 118.3 (CTAF) 0257.8	GND CON 126.3 348.6	CLNC DEL 119.15	



8000	WODOV BJA 19.7	VGSI and descent angles not coincident	IUHEV 13.8	KEPRE 20.1	ELEV 335	TDZE 334
TACAN	ZOKOD 0.9	HIVUX 5.3	WIGTU 10	330°	349±	330° 9.2 NM from FAF
	JUBIV 3.3			5000	380±	330° 9.2 NM from FAF
				3800	471	330° 9.2 NM from FAF
				7000	343±	330° 9.2 NM from FAF
				3.50° TCH 53		
CATEGORY	C	D	E			
S-33	1200-2½	866	(900-2½)			
CIRCLING	1200-2½ 865 (900-2½)	1380-3 1045 (1100-2)	1420-3 1085 (1100-3)			
					MIRL Rwy 1-19 Rwy 19 ldg 3612'	Rwy 1 ldg 3887' Rwy 19 ldg 3612' Rwy 33 ldg 7819'

HI-TACAN RWY 33

NE-1, 25 MAR 2021 to 22 APR 2021

NE-1, 25 MAR 2021 to 22 APR 2021