

BLYTHE, CALIFORNIA

AL-53 (FAA)

19115

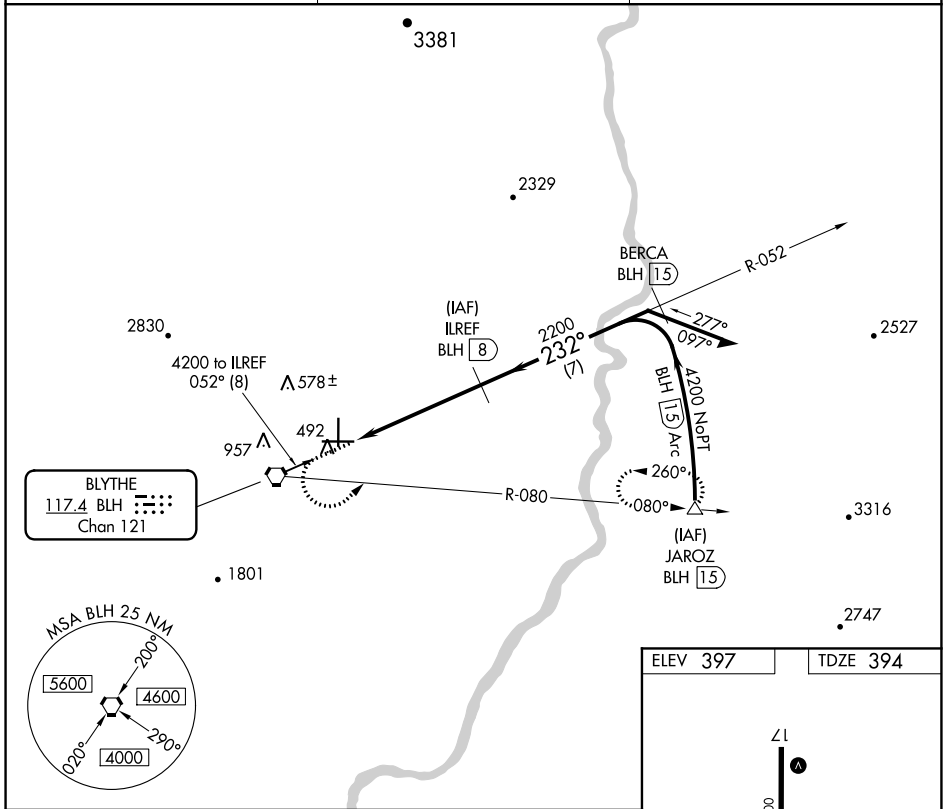
VORTAC BLH 117.4 Chan 121	APP CRS 232°	Rwy Idg TDZE 394 Apt Elev 397
-----------------------------------------------	------------------------	---------------------------------------------------

VOR/DME RWY 26

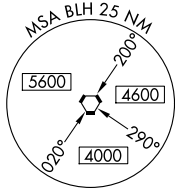
BLYTHE (BLH)

⚠ MISSED APPROACH: Climb to 1200 then climbing left turn to 4600 via BLH VORTAC R-080 to JAROZ/1.5 DME and hold.

ASOS 120.175	LOS ANGELES CENTER 128.15 285.6	UNICOM 122.8 (CTAF)
------------------------	-------------------------------------------	-------------------------------



BLYTHE
117.4 BLH
Chan 121



1200	4600	JAROZ	ILREF BLH (8)	Remain within 10 NM
↑	BLH R-080	△		

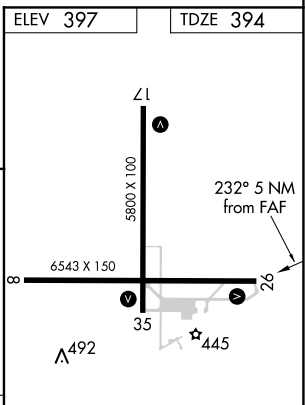
VGSI and descent angle not coincident (VGSI Angle 3.00/TCH 42).

BLH (3) → 2200 → 4200 → 052° → 4200

232°

3.34° TCH 42

5 NM



CATEGORY	A	B	C	D
S-26	760-1 366 (400-1)			760-1¼ 366 (400-1¼)
CIRCLING	840-1 443 (500-1)	860-1 463 (500-1)	960-1½ 563 (600-1½)	1260-2¾ 863 (900-2¾)

MIRL Rwy 8-26 and 17-35

BLYTHE, CALIFORNIA
Amdt 6 15MAY03

33°37'N-114°43'W

BLYTHE (BLH)

VOR/DME RWY 26

SW-3, 25 MAR 2021 to 22 APR 2021

SW-3, 25 MAR 2021 to 22 APR 2021