

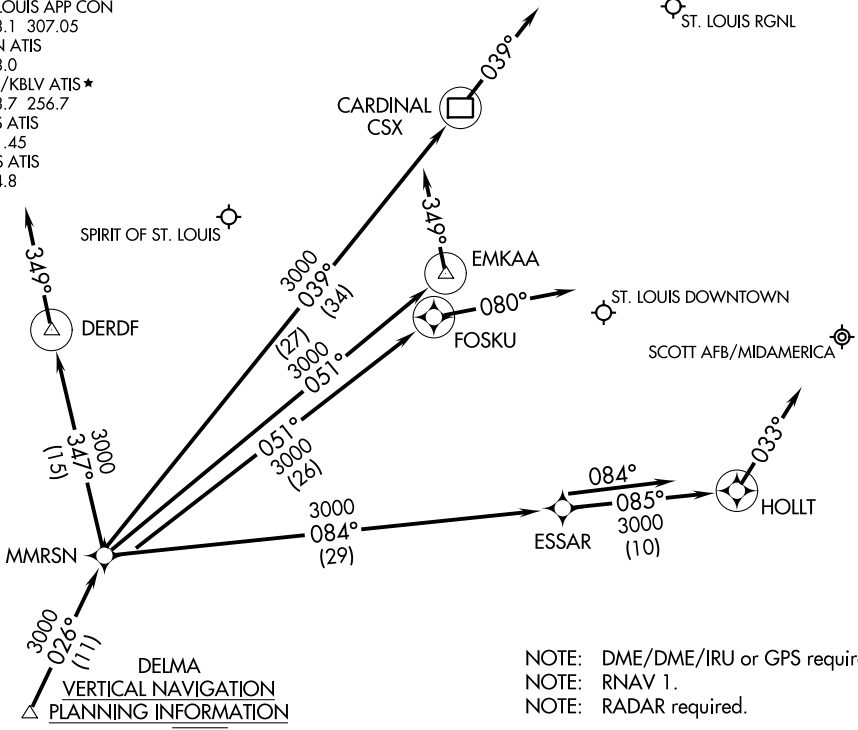
# DELMA FOUR ARRIVAL (RNAV)

AL-46 (FAA)

BELLEVILLE, ILLINOIS

ST LOUIS APP CON  
 128.1 307.05  
 ALN ATIS  
 128.0  
 BLV/KBLV ATIS \*  
 128.7 256.7  
 CPS ATIS  
 121.45  
 SUS ATIS  
 134.8

ST. LOUIS RGNL



DELMA  
 VERTICAL NAVIGATION  
 PLANNING INFORMATION  
 Expect 13000

NOTE: DME/DME/IRU or GPS required.  
 NOTE: RNAV 1.  
 NOTE: RADAR required.

NOTE: Chart not to scale.

## ARRIVAL ROUTE DESCRIPTION

**SPIRIT OF ST. LOUIS:**  
LANDING RUNWAYS 8L/R: From DELMA on track 026° to MMRSN, then on track 347° to DERDF. Expect RADAR vectors to final approach. If no heading received, track 349°.  
LANDING RUNWAYS 26L/R: From DELMA on track 026° to MMRSN, then on track 051° to EMKAA. Expect RADAR vectors to final approach. If no heading received, track 349°.

**ST. LOUIS DOWNTOWN:**  
LANDING RUNWAY 12R: From DELMA on track 026° to MMRSN, then on track 051° to FOSKU. Expect RADAR vectors to final approach. If no heading received, track 080°.  
LANDING RUNWAYS 30L/R: From DELMA on track 026° to MMRSN, then on track 084° to ESSAR, then on track 085° to HOLLT. Expect RADAR vectors to final approach. If no heading received, track 033°.

**SCOTT AFB/MIDAMERICA:**  
LANDING RUNWAYS 14L/R, 32L/R: From DELMA on track 026° to MMRSN, then on track 084° to ESSAR. Expect RADAR vectors to final approach. If no heading received, track 084°.

**ST. LOUIS RGNL:**  
LANDING RUNWAYS 11, 17, 29, 35: From DELMA on track 026° to MMRSN, then on track 039° to CSX DME. Expect RADAR vectors to final approach course. If no heading received, track 039°.

EC-3, 25 MAR 2021 to 22 APR 2021

EC-3, 25 MAR 2021 to 22 APR 2021