


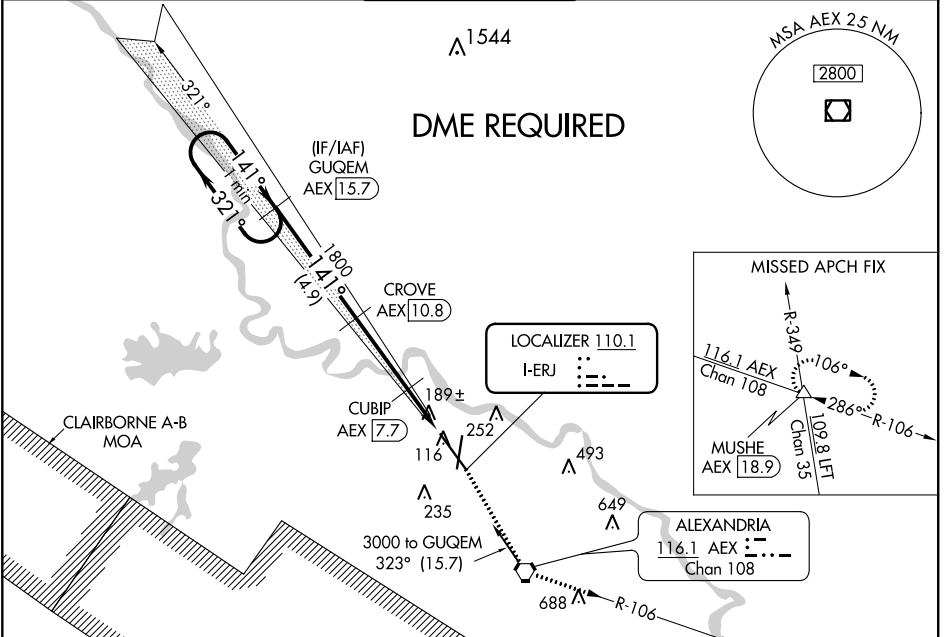
LOC I-ERJ <b>110.1</b>	APP CRS <b>141°</b>	Rwy Idg <b>9352</b> TDZE <b>85</b> Apt Elev <b>89</b>
---------------------------	------------------------	---

# ILS or LOC RWY 14

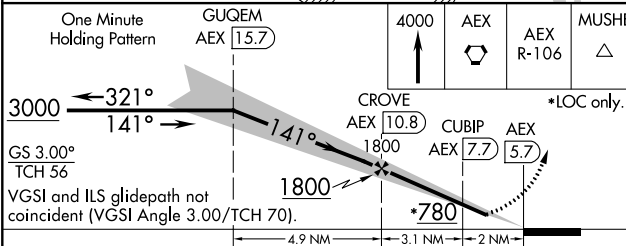
ALEXANDRIA INTL (AEX)

<p>▼ DME from AEX VORTAC. Simultaneous reception of I-ERJ and AEX DME required. When R-3801 B active, RADAR and DME required. DME required. **RVR 1800 authorized with use of FD or AP or HUD to DA.</p>	<p>SSALR  </p>	<p>MISSED APPROACH: Climb to 4000 direct AEX VORTAC and on AEX VORTAC R-106 to MUSHE INT/18.9 DME and hold.</p>
--	---	---

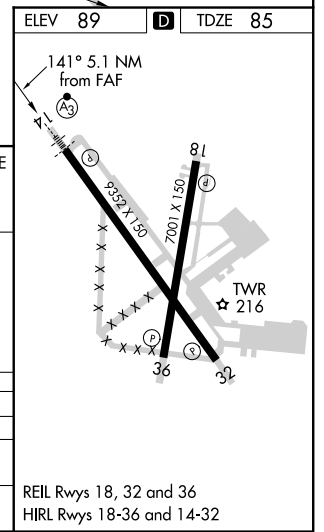
ASOS <b>123.975</b>	POLK APP CON <b>125.4 254.8</b>	ALEXANDRIA TOWER <b>127.35 (CTAF) 269.2</b>	GND CON <b>121.9 372.0</b>	CLNC DEL <b>121.9</b>
------------------------	------------------------------------	--	-------------------------------	--------------------------



One Minute Holding Pattern	GUQEM AEX <b>15.7</b>	4000	AEX	AEX R-106	MUSHE
----------------------------	-----------------------	------	-----	-----------	-------



CATEGORY	A	B	C	D
S-ILS 14 **	285/24		200 (200-½)	
S-LOC 14	460/24		375 (400-½)	
			460/40	
			375 (400-¾)	
CIRCLING	540-1	560-1	700-1¾	860-2½
	451 (500-1)	471 (500-1)	611 (700-1¾)	771 (800-2½)



SC-4, 25 MAR 2021 to 22 APR 2021

SC-4, 25 MAR 2021 to 22 APR 2021