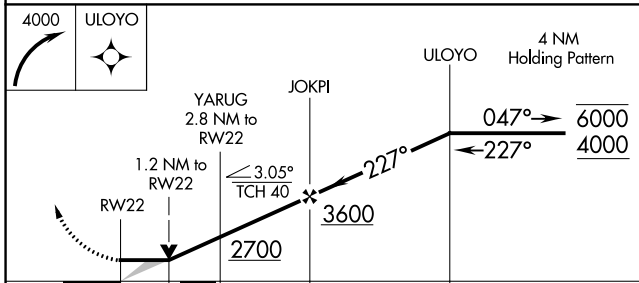
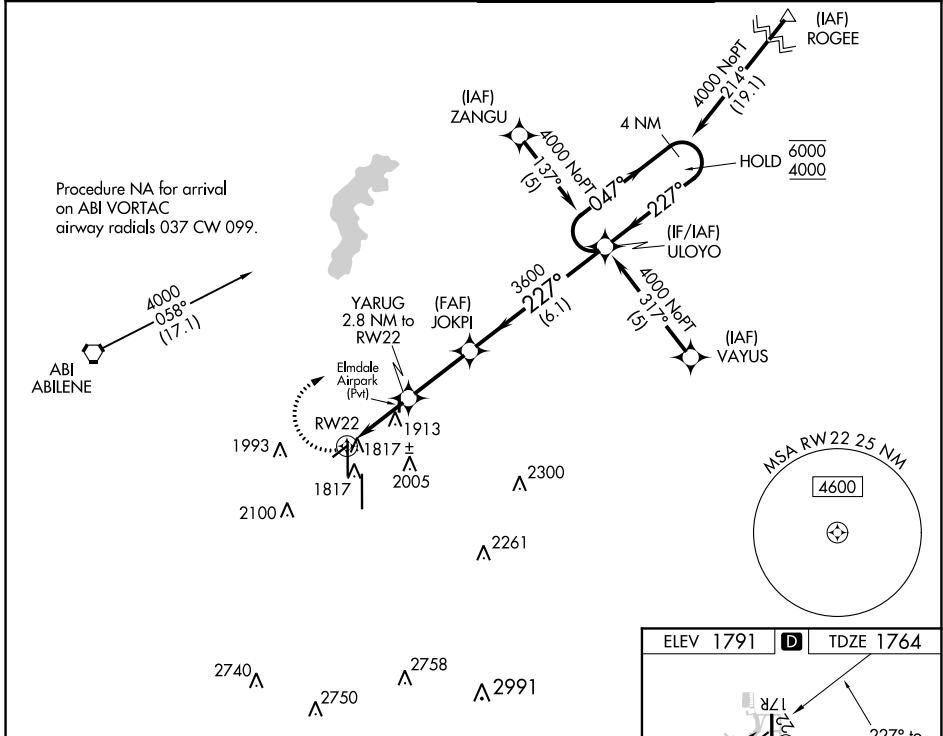


APP CRS	Rwy Idg	<b>3678</b>
<b>227°</b>	TDZE	<b>1764</b>
	Apt Elev	<b>1791</b>

# RNAV (GPS) RWY 22

ABILENE RGNL (ABI)

RNP APCH.		MISSED APPROACH: Climbing right turn to 4000 direct ULOYO and hold.	
ATIS <b>118.25</b>	ABILENE APP CON <b>125.0 338.3 (EAST)</b> <b>127.2 282.3 (WEST)</b>	ABILENE TOWER <b>120.1 257.8</b>	GND CON <b>121.7 348.6</b>



ELEV 1791	<b>D</b>	TDZE 1764
-----------	----------	-----------

0.3% UP 355' X 700'

0.4% UP 7208 X 150'

TWR 1940

17R

227° to RW22

35L

7198 X 150'

35R

REIL Rwy 35L  
MIRL Rwy 4-22  
HIRL Rws 17L-35R and 17R-35L

CATEGORY	A	B	C	D
LNVA MDA	2180-1	416 (400-1)	2180-1 1/8	416 (400-1 1/8)
<b>C</b> CIRCLING	2300-1 509 (600-1)	2320-1 529 (600-1)	2420-1 3/4 629 (700-1 3/4)	2460-2 669 (700-2)

SC-2, 25 MAR 2021 to 22 APR 2021

SC-2, 25 MAR 2021 to 22 APR 2021