

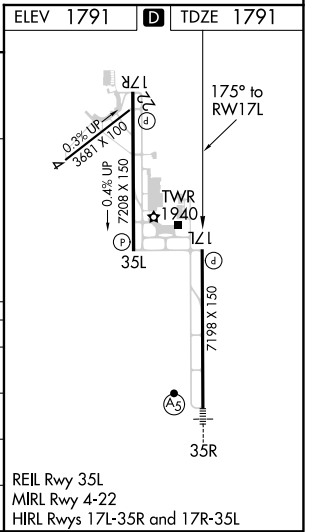
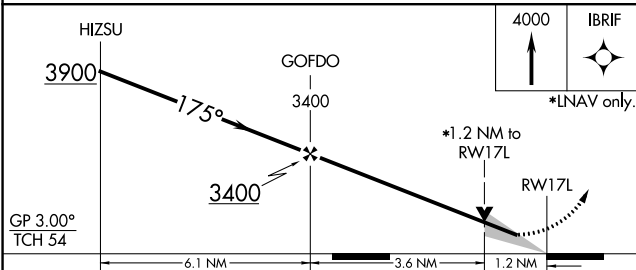
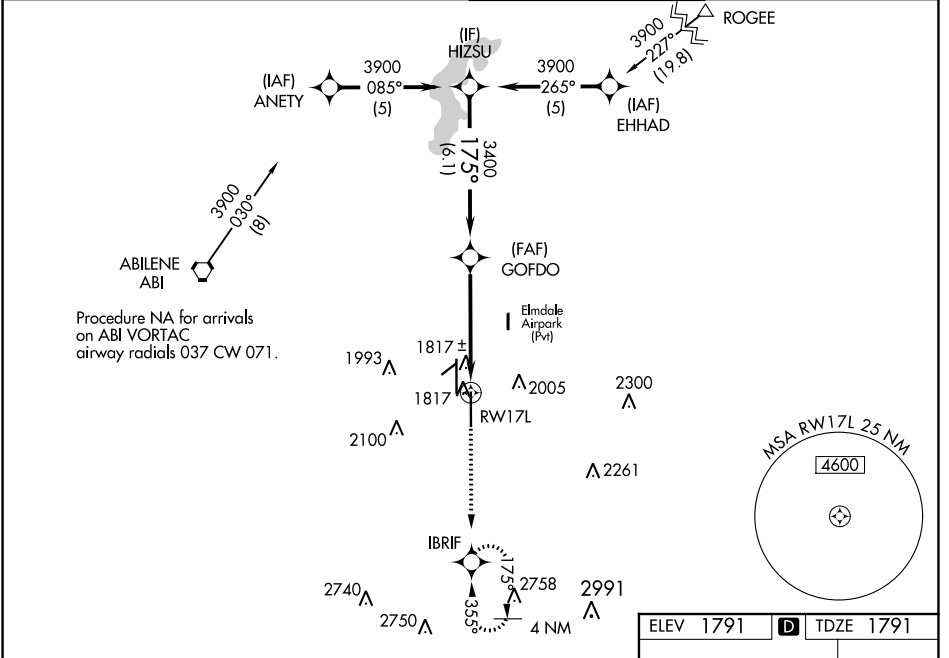
WAAS CH 50317 W17A	APP CRS 175°	Rwy Idg TDZE Apt Elev	7198 1791 1791
---------------------------------	------------------------	-----------------------------	---

RNAV (GPS) RWY 17L

ABILENE RGNL (ABI)

RNP APCH.	MISSED APPROACH: Climb to 4000 direct IBRIF and hold, continue climb-in-hold to 4000.
<p>⚠ For uncompensated Baro-VNAV systems, LNAV/VNAV NA below -18°C or above 45°C.</p> <p>ASR</p>	

ATIS 118.25	ABILENE APP CON 125.0 338.3 (EAST) 127.2 282.3 (WEST)	ABILENE TOWER 120.1 257.8	GND CON 121.7 348.6
-----------------------	---	-------------------------------------	-------------------------------



CATEGORY	A	B	C	D	E
LPV DA	2041-3/4		250 (300-3/4)		
LNAV/VNAV DA	2171-1 1/4		380 (400-1 1/4)		
LNAV MDA	2240-1 449 (500-1)		2240-1 3/8 449 (500-1 3/8)		
C CIRCLING	2300-1 509 (600-1)	2320-1 529 (600-1)	2420-1 3/4 629 (700-1 3/4)	2460-2 669 (700-2)	2620-3 829 (900-3)

SC-2, 25 MAR 2021 to 22 APR 2021

SC-2, 25 MAR 2021 to 22 APR 2021