

APP CRS <b>177°</b>	Rwy Idg TDZE Apt Elev <b>1046</b>	N/A N/A <b>1046</b>
------------------------	--	---------------------------

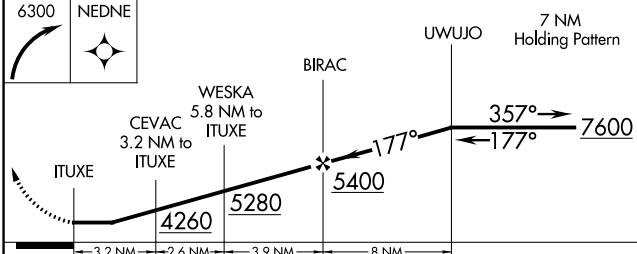
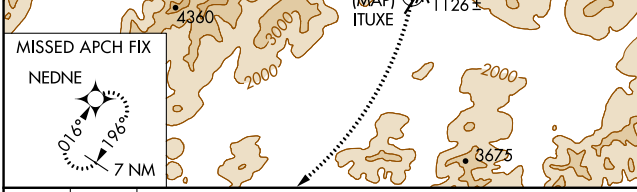
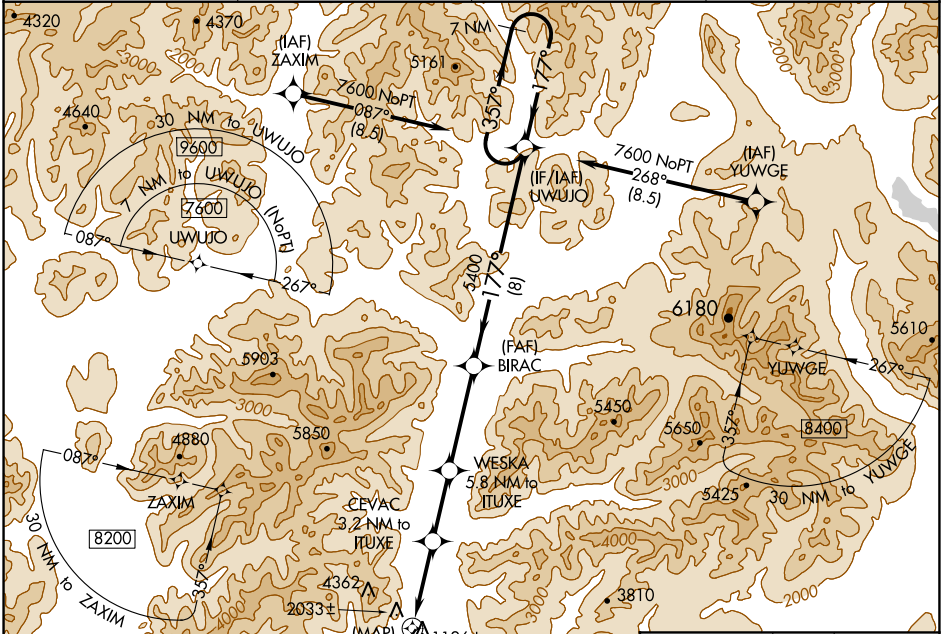
# RNAV (GPS)-A

## COLDFOOT (CXF) (PACX)

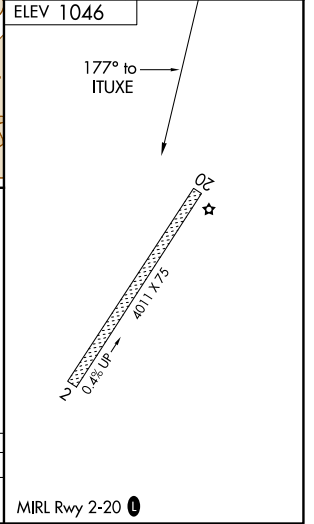
**NA**  
DME/DME RNP-0.3 NA. Use Bettles altimeter setting, when not received, procedure NA. Rwy 20 helicopter visibility reduction below 1 SM NA. Circling Rwy 20 NA at night. Circling NA for Cats B and C west of Rwy 2-20.

**MISSED APPROACH:** Climbing right turn to 6300 direct NEDNE and hold.

BTT/PABT ASOS <b>135.45</b>	ANCHORAGE CENTER <b>124.6 352.0</b>	FAIRBANK RADIO <b>122.0</b>	CTAF <b>122.90</b>
--------------------------------	--	--------------------------------	-----------------------



CATEGORY	A	B	C	D
<b>CIRCLING</b>	3460-1¼ 2414 (2500-1¼)	3460-1½ 2414 (2500-1½)	4260-3 3214 (3300-3)	NA



AK, 31 DEC 2020 to 25 FEB 2021

AK, 31 DEC 2020 to 25 FEB 2021