

WAAS CH <b>93727</b> <b>W02A</b>	APP CRS <b>016°</b>	Rwy Idg TDZE Apt Elev	<b>4011</b> <b>1044</b> <b>1046</b>
--	------------------------	-----------------------------	---

# RNAV (GPS) RWY 2

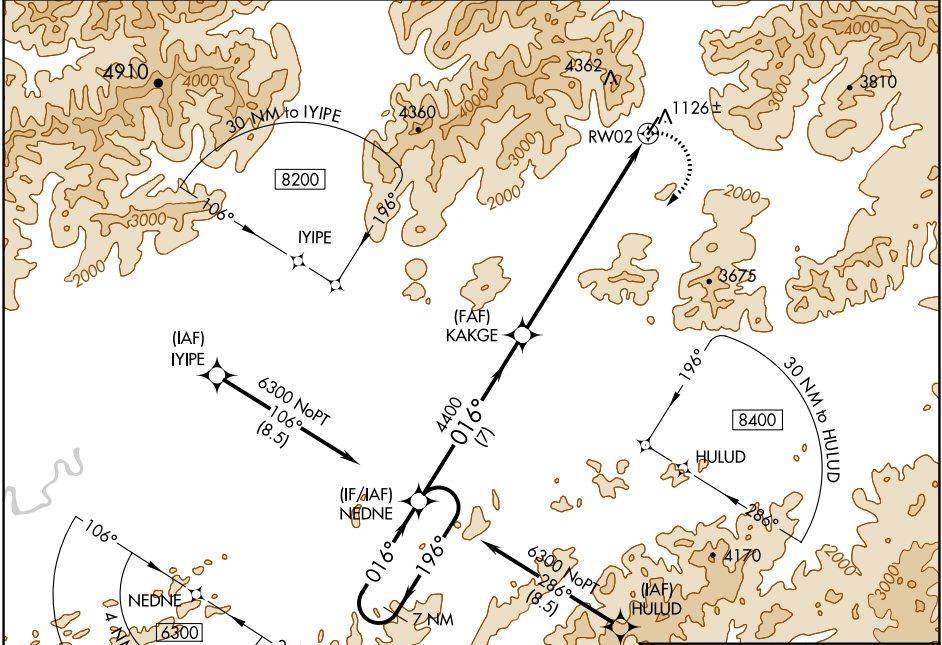
COLDFOOT (CXF) (PACX)

**⚠** Circling NA for Cats B and C west of Rwy 2-20. DME/DME RNP-0.3 NA. Rwy 2 helicopter visibility reduction below 3/4 SM NA. Use Bettles altimeter setting, when not received, procedure NA. Circling Rwy 20 NA at night.

**⚠** NA  
**⚠** -19°C

**MISSED APPROACH:**  
Climbing right turn to 6300 direct NEDNE and hold.

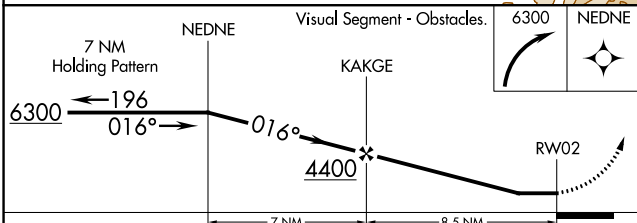
BTT/PABT ASOS <b>135.45</b>	ANCHORAGE CENTER <b>124.6 352.0</b>	FAIRBANK RADIO <b>122.0</b>	CTAF <b>122.90</b>
--------------------------------	--	--------------------------------	-----------------------



AK, 31 DEC 2020 to 25 FEB 2021

AK, 31 DEC 2020 to 25 FEB 2021

ELEV 1046	TDZE 1044
-----------	-----------



CATEGORY	A	B	C	D
LP MDA	4160-1¼ 3116 (3200-1¼)	4160-1½ 3116 (3200-1½)	4160-3 3116 (3200-3)	NA
LNAV MDA	4340-1¼ 3296 (3300-1¼)	4340-1½ 3296 (3300-1½)	4340-3 3296 (3300-3)	NA
<b>C</b> CIRCLING	4340-1¼ 3294 (3300-1¼)	4340-1½ 3294 (3300-1½)	4340-3 3294 (3300-3)	NA

