

BETTLES TWO DEPARTURE (OBSTACLE) (RNAV)

FAIRBANKS RADIO
122.0
ANCHORAGE CENTER
124.6 352.0

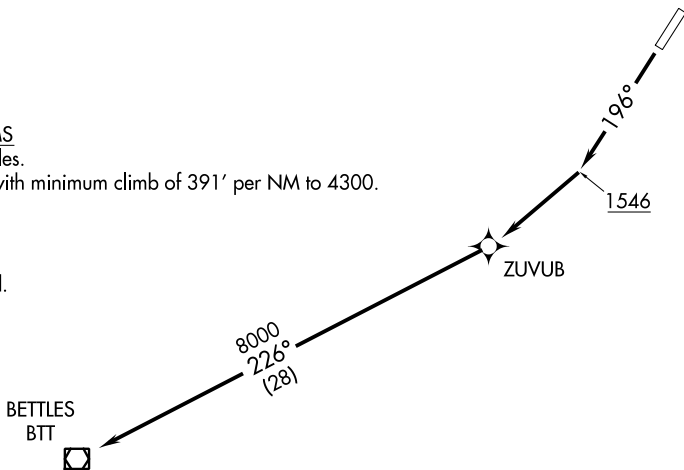
TAKEOFF MINIMUMS

Rwy 2: NA - obstacles.

Rwy 20: Standard with minimum climb of 391' per NM to 4300.

NOTE: RNAV 1.

NOTE: GPS required.



TAKEOFF OBSTACLE NOTE

- Rwy 20: Trees beginning 2' from DER, 144' left of centerline, up to 13' AGL/1042' MSL.
- Trees beginning 18' from DER, 130' right of centerline, up to 11' AGL/1042' MSL.
- Tree, vertical structure, secondary road beginning 93' from DER, 142' left of centerline, up to 46' AGL/1076' MSL. Tree 277' from DER, 272' right of centerline, 16' AGL/1043' MSL.
- Tree, vertical structure beginning 295' from DER, 423' left of centerline, up to 59' AGL/1089' MSL.
- Tree 310' from DER, 532' right of centerline, 19' AGL/1044' MSL. Tree 364' from DER, 466' right of centerline, 22' AGL/1048' MSL. Tree 399' from DER, 497' right of centerline, 28' AGL/1054' MSL. Tree 582' from DER, 510' right of centerline, 30' AGL/1055' MSL.
- Trees beginning 805' from DER, 519' right of centerline, up to 43' AGL/1070' MSL.
- Trees beginning 1031' from DER, 423' left of centerline, up to 65' AGL/1092' MSL.
- Trees beginning 1168' from DER, 274' right of centerline, up to 65' AGL/1088' MSL.
- Trees beginning 1538' from DER, 122' right of centerline, up to 69' AGL/1092' MSL.
- Trees beginning 1685' from DER, 136' left of centerline, up to 69' AGL/1096' MSL.
- Trees beginning 2345' from DER, 388' left of centerline, up to 73' AGL/1101' MSL.
- Tree 1.2 NM from DER, 2383' left of centerline, 12' AGL/1219' MSL.
- Tree and road beginning 1.2 NM from DER, 2436' left of centerline, up to 30' AGL/1249' MSL.
- Tree and road beginning 1.3 NM from DER, 2170' left of centerline, up to 30' AGL/1260' MSL.
- Road 1.3 NM from DER, 2480' left of centerline, 1250' MSL. Tree 1.3 NM from DER, 2415' left of centerline, 30' AGL/1257' MSL. Tree and road beginning 1.3 NM from DER, 1620' left of centerline, up to 38' AGL/1266' MSL. Trees beginning 1.8 NM from DER, 817' left of centerline, up to 63' AGL/1324' MSL. Tree 1.9 NM from DER, 468' left of centerline, 48' AGL/1329' MSL. Tree 2.1 NM from DER, 3488' left of centerline, 15' AGL/1343' MSL.
- Trees beginning 2.1 NM from DER, 3470' left of centerline, up to 23' AGL/1351' MSL.
- Tree 2.1 NM from DER, 3494' left of centerline, 19' AGL/1352' MSL.
- Terrain 2.1 NM from DER, 3794' left of centerline, 1369' MSL.
- Terrain and tree beginning 2.2 NM from DER, 3569' left of centerline, up to 1388' MSL.
- Tree and terrain beginning 2.2 NM from DER, 3556' left of centerline, up to 39' AGL/1420' MSL.

NOTE: Chart not to scale.

DEPARTURE ROUTE DESCRIPTION

TAKEOFF RUNWAY 20: Climb heading 196° to 1546, then climb direct ZUVUB, then on track 226° direct BTT VOR/DME, maintain 8000.

BETTLES TWO DEPARTURE (OBSTACLE) (RNAV)