

APP CRS <b>334°</b>	Rwy Idg TDZE Apt Elev <b>N/A</b> <b>N/A</b> <b>142</b>
------------------------	---

**RNAV (GPS)-B**  
ORLANDO APOPKA (X04)

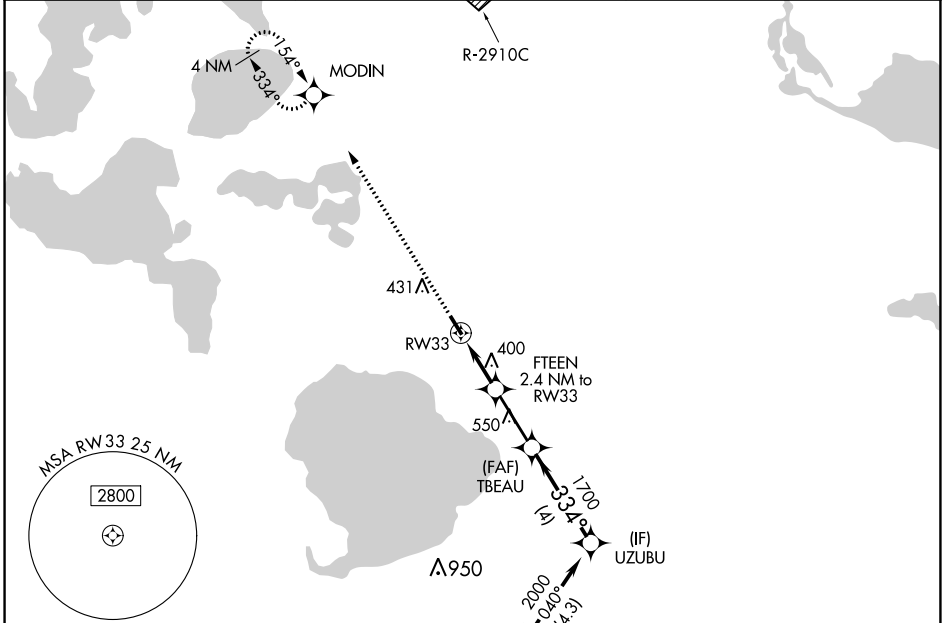
**NA** DME/DME RNP-0.3 NA. Procedure NA at night. Visibility reduction by helicopters NA. Use Leesburg Intl altimeter setting; when not received, use Executive altimeter setting.

MISSED APPROACH: Climb to 2000 direct MODIN and hold.

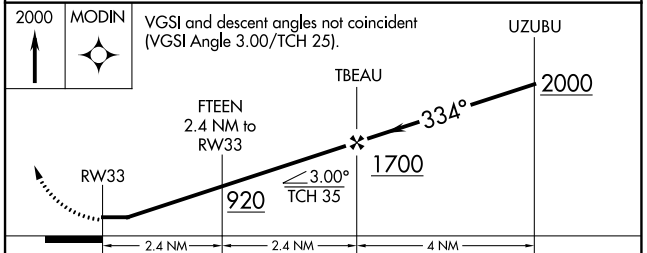
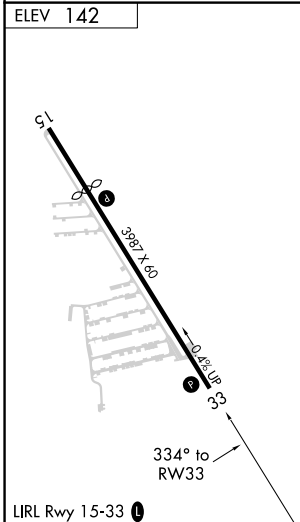
LEE ASOS  
**134.325**

ORLANDO APP CON  
**135.3 351.9**

UNICOM  
**123.05 (CTAF)**



ELEV 142



CATEGORY	A	B	C	D
CIRCLING	700-1 558 (600-1)	840-1 698 (700-1)	NA	

SE-3, 28 JAN 2021 to 25 FEB 2021

SE-3, 28 JAN 2021 to 25 FEB 2021