

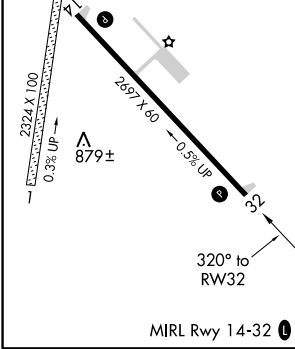
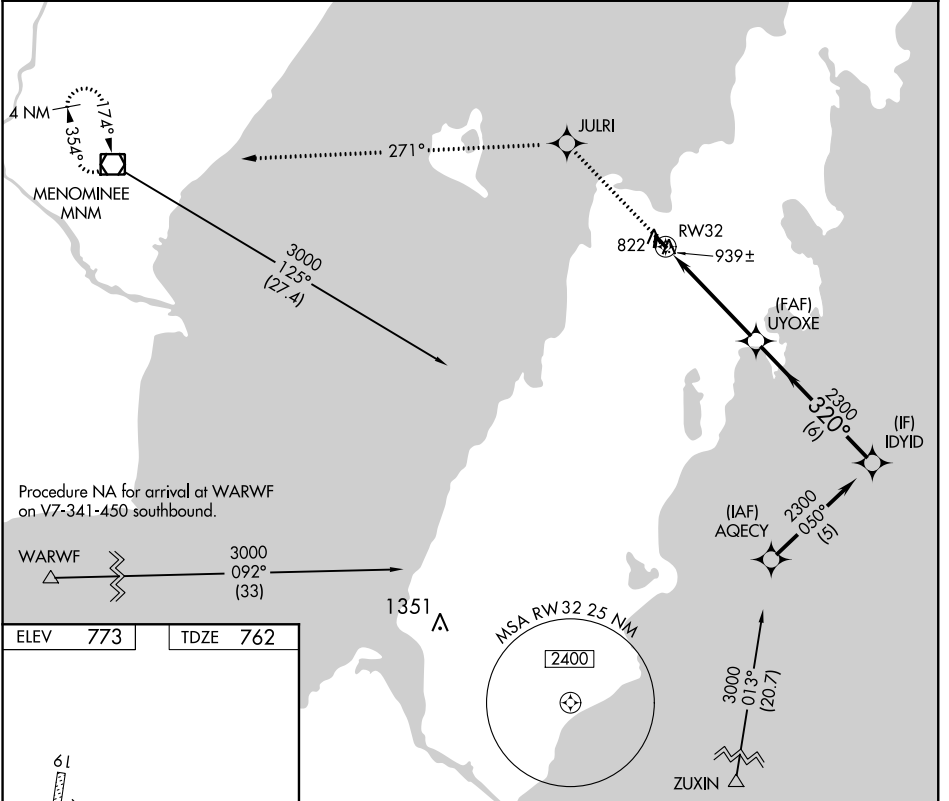
APP CRS	Rwy ldg	<b>2697</b>
<b>320°</b>	TDZE	<b>762</b>
	Apt Elev	<b>773</b>

# RNAV (GPS) RWY 32

EPHRAIM-GIBALTAR (3D2)

RNP APCH.		MISSED APPROACH: Climb to 3000 direct JULRI and on track 271° to MNM VOR/DME and hold.
<p><b>▼</b> Rwy 32 helicopter visibility reduction below 3/4 SM NA. Use Door County Cherryland altimeter setting; when not received, use Menominee altimeter setting and increase all MDA 20 feet.</p> <p><b>▲ NA</b></p>		

AWOS-3PT <b>124.175</b>	GREEN BAY APP CON★ <b>120.3 338.2</b>	UNICOM <b>123.0 (CTAF) 0</b>
----------------------------	--	---------------------------------



3000	JULRI	tr 271°	MNM	VGSI and descent angles not coincident (VGSI Angle 3.00/TCH 25).	Procedure Turn NA
↑	✧		◻		
UYOXE		IDYID			
RW32		320°		2300	
4.7 NM		6 NM			
CATEGORY	A	B	C	D	
LNAV MDA	1260-1	498 (500-1)	1260-1 1/4 498 (500-1 1/4)	NA	

MIRL Rwy 14-32 **0**

EC-3, 28 JAN 2021 to 25 FEB 2021

EC-3, 28 JAN 2021 to 25 FEB 2021