

| | | | |
|--|------------------------|-----------------------------|---|
| WAAS CH 78135 W18A | APP CRS 179° | Rwy Idg TDZE Apt Elev | 6000 1350 1350 |
|--|------------------------|-----------------------------|---|

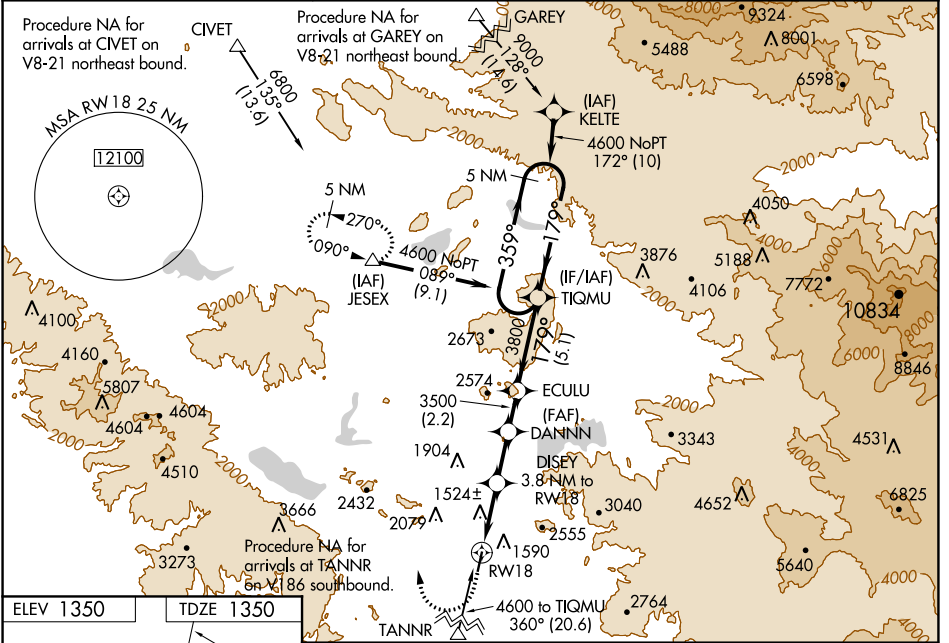
RNAV (GPS) RWY 18

FRENCH VALLEY (F70)

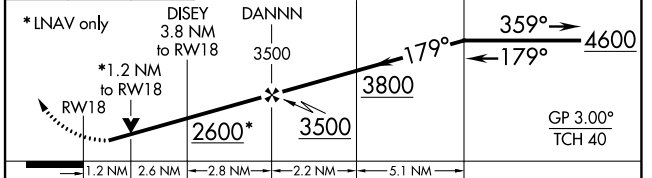
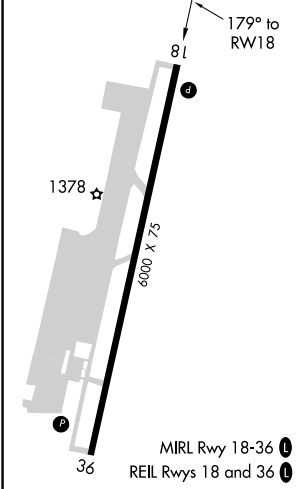
NA DME/DME RNP-0.3 NA. Baro-VNAV and VDP NA with Ramona altimeter setting. Circling NA west of Rwy 18-36. For uncompensated Baro-VNAV systems, LNAV/VNAV NA below -17°C (2°F) or above 54°C (130°F). When local altimeter setting not received use Ramona altimeter setting: increase LPV DA to 1685 feet and all visibilities ¼ mile, LNAV/VNAV DA to 1955 feet and all visibilities ¾ mile, all MDA 80 feet and LNAV visibility Cat B ¼ mile, Cat C ½ mile, and Circling visibility Cat C ¼ mile. Helicopter visibility reduction below ¾ SM NA.

MISSED APPROACH: Climb to 2500 then climbing right turn to 5000 direct JESEX and hold.

| | | |
|--------------------------|--|-------------------------------|
| AWOS-3 119.025 | MARCH APP CON* 133.5 306.975 | UNICOM 122.8 (CTAF) |
|--------------------------|--|-------------------------------|



| | |
|-----------|-----------|
| ELEV 1350 | TDZE 1350 |
|-----------|-----------|



| CATEGORY | A | B | C | D |
|-------------------|-----------|----------------|-------------------------------|----|
| LPV DA | 1600-7/8 | 250 (300-7/8) | | NA |
| LNAV/VNAV DA | 1871-13/4 | 521 (600-13/4) | | NA |
| LNAV MDA | 1780-1 | 430 (500-1) | 1780-1 1/4 430 (500-1 1/4) | NA |
| C CIRCLING | 2020-1 | 670 (700-1) | 2060-2 710 (800-2) | NA |

SW-3, 28 JAN 2021 to 25 FEB 2021

SW-3, 28 JAN 2021 to 25 FEB 2021