

APP CRS	Rwy Idg	2160
181°	TDZE	708
	Apt Elev	708

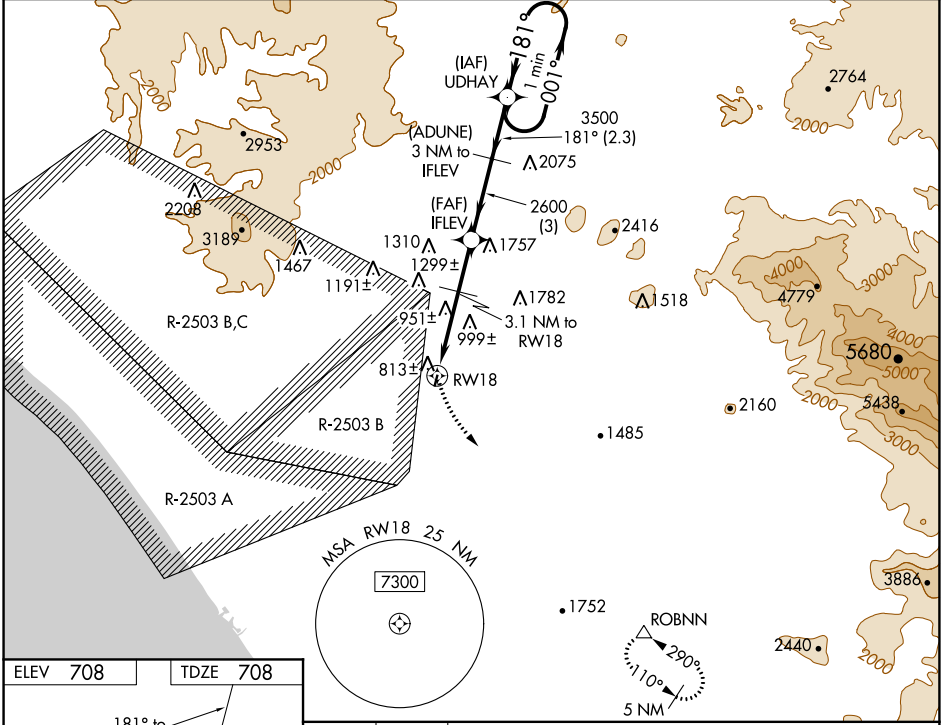
GPS RWY 18

FALLBROOK COMMUNITY AIRPARK (L18)

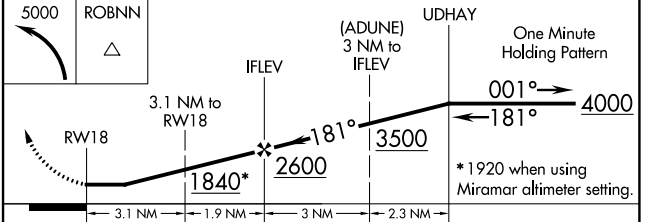
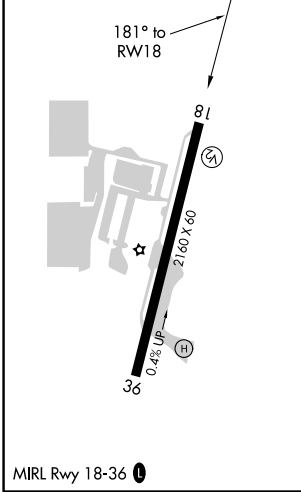
NA Circling NA west of Rwy 18-36. Obtain local altimeter setting on CTAF; when not received, use MCAS Miramar altimeter setting minimums.

MISSED APPROACH: Climbing left turn to 5000 direct ROBNN WP and hold.

AWOS-3P 118.425	SOCAL APP CON 127.3 323.0	CTAF 123.05 0
---------------------------	-------------------------------------	-------------------------



ELEV	708	TDZE	708
------	------------	------	------------



CATEGORY	A	B	C	D
S-18	1260-1	552 (600-1)		NA
CIRCLING	1260-1	552 (600-1)		NA
MCAS MIRAMAR ALTIMETER SETTING MINIMUMS				
S-18	1360-1	652 (700-1)		NA
CIRCLING	1360-1	652 (700-1)		NA

SW-3, 28 JAN 2021 to 25 FEB 2021

SW-3, 28 JAN 2021 to 25 FEB 2021