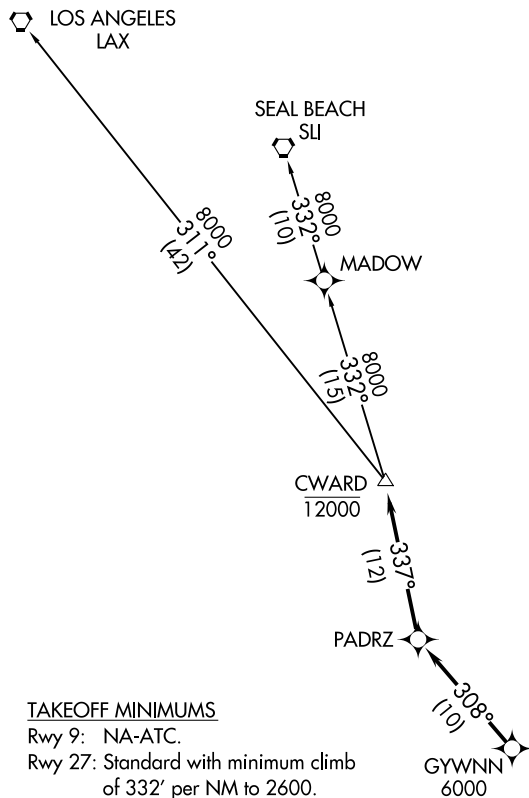


ATIS  
132.025  
RAMONA TOWER ★  
119.875  
SOCAL DEP CON  
119.6 363.1

**TOP ALTITUDE:  
AS ASSIGNED BY ATC**



NOTE: RADAR required.  
NOTE: RNAV 1.  
NOTE: GPS or DME/DME/IRU required.  
NOTE: Turbojet and turboprop only.  
NOTE: Tower En Route control only.

TAKEOFF MINIMUMS

Rwy 9: NA-ATC.  
Rwy 27: Standard with minimum climb  
of 332' per NM to 2600.

NOTE: Chart not to scale.

**DEPARTURE ROUTE DESCRIPTION**

TAKEOFF RUNWAY 27: Climb heading 268° to 2600, expect vectors to cross GYWNN at or above 6000, then on track 308° to PADRZ, then on track 337° to cross CWARD at or below 12000, thence. . . .

. . . .on transition. Maintain ATC assigned altitude. Expect filed altitude 10 minutes after departure.

LOS ANGELES TRANSITION (CWARD2.LAX)

SEAL BEACH TRANSITION (CWARD2.SLI)

SW-3, 28 JAN 2021 to 25 FEB 2021

SW-3, 28 JAN 2021 to 25 FEB 2021