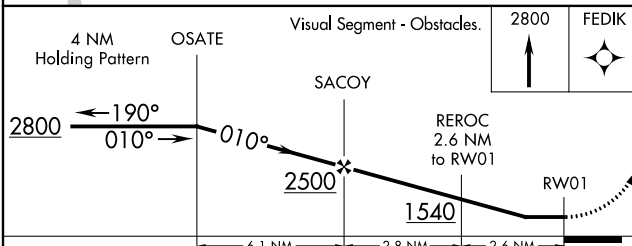
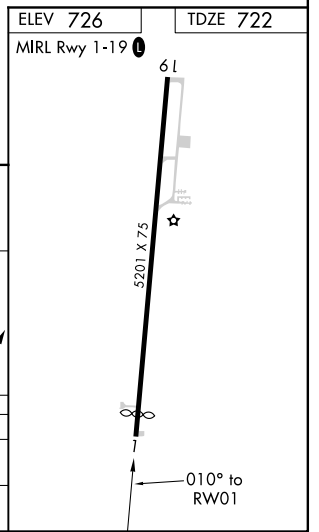
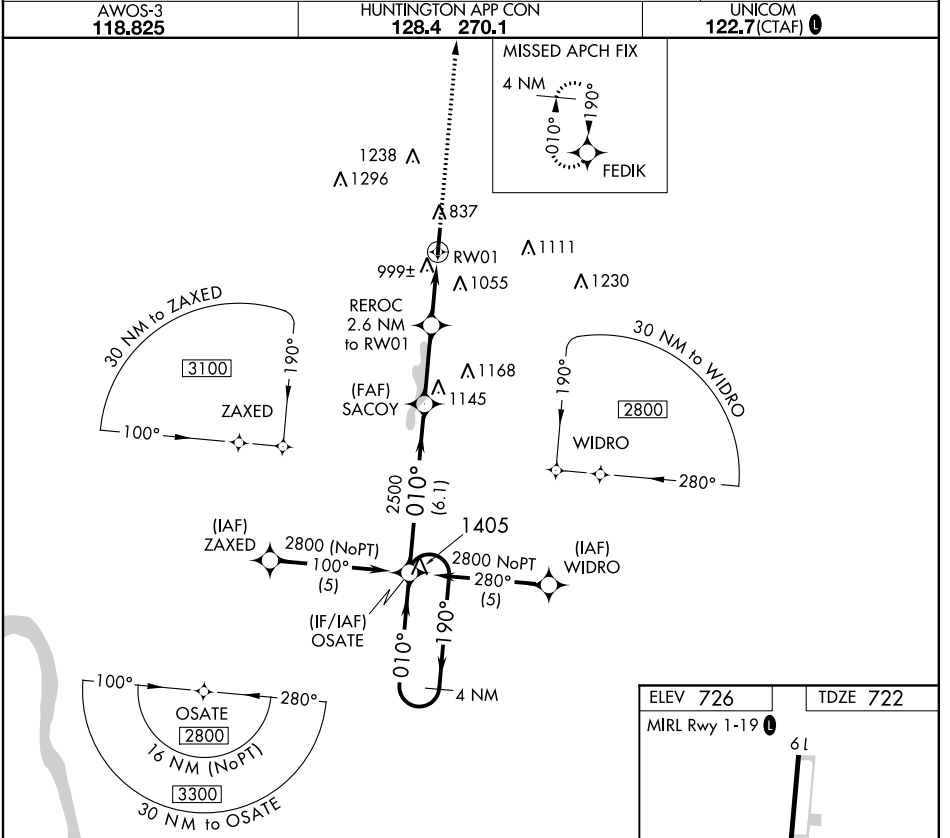


APP CRS	Rwy Idg	<b>4870</b>
<b>010°</b>	TDZE	<b>722</b>
	Apt Elev	<b>726</b>

# RNAV (GPS) RWY 1

JAMES A RHODES (I43)

RNP APCH.	When local altimeter setting not received, use Greater Portsmouth altimeter setting and increase all MDA 60 feet, and increase LNAV Cat C/D and Circling Cat B/C/D visibilities 1/4 mile. Rwy 1 helicopter visibility reduction below 1 SM NA. Straight-in Rwy 1 NA at night, Circling Rwy 1 NA at night.	MISSED APPROACH: Climb to 2800 direct FEDIK WP and hold.
AWOS-3 <b>118.825</b>	HUNTINGTON APP CON <b>128.4 270.1</b>	UNICOM <b>122.7 (CTAF) 0</b>



CATEGORY	A	B	C	D
LNAV MDA	1300-1	578 (600-1)	1300-1½ 578 (600-1½)	1300-1¾ 578 (600-1¾)
CIRCLING	1340-1 614 (700-1)	1420-1 694 (700-1)	1420-2 694 (700-2)	1420-2¼ 694 (700-2¼)

EC-2, 28 JAN 2021 to 25 FEB 2021

EC-2, 28 JAN 2021 to 25 FEB 2021