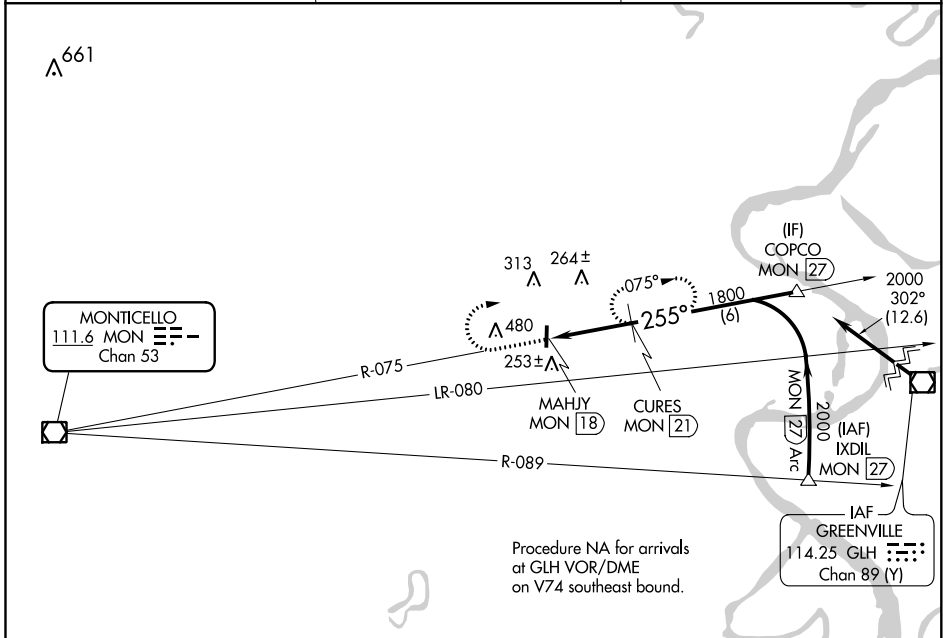


VOR/DME MON <b>111.6</b> Chan <b>53</b>	APP CRS <b>255°</b>	Rwy ldg TDZE Apt Elev	<b>N/A</b> <b>N/A</b> <b>141</b>
---	------------------------	-----------------------------	--

**VOR/DME-A**  
MC GEHEE MUNI (7M1)

**∇** Circling NA West of Rwy 18-36. Use Greenville, MS altimeter setting; when not received use Monticello altimeter setting and increase all MDA 20 feet and increase Cat C visibility ¼ mile. Procedure NA at night.  
**▲ NA** MISSED APPROACH: Climb to 1000 then climbing right turn to 1800 on MON VOR/DME R-075 to CURES/MON 21 DME and hold.

GLH ASOS <b>125.525</b>	MEMPHIS CENTER <b>135.875 269.35</b>	CTAF <b>122.9</b>
----------------------------	---	----------------------



SC-1, 28 JAN 2021 to 25 FEB 2021

SC-1, 28 JAN 2021 to 25 FEB 2021

