

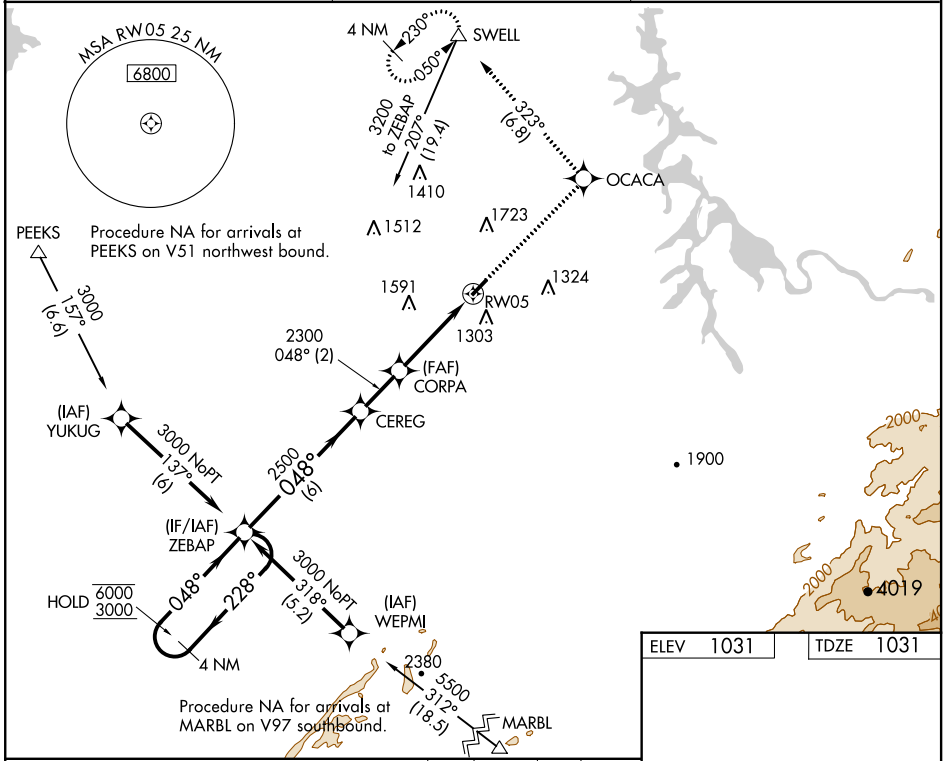
WAAS CH 99531 W05A	APP CRS 048°	Rwy Idg TDZE Apt Elev	3643 1031 1031
--	------------------------	-----------------------------	---

RNAV (GPS) RWY 5

MONROE COUNTY (MNV)

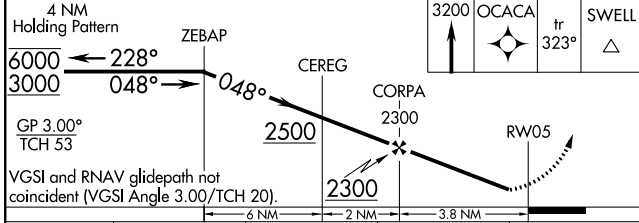
RNP APCH.	MISSED APPROACH: Climb to 3200 direct OCACA and track 323° to SWELL and hold.
-----------	--

AWOS-3 118.475	KNOXVILLE APP CON 123.9 353.6	UNICOM 123.0 (CTAF)
--------------------------	---	-------------------------------

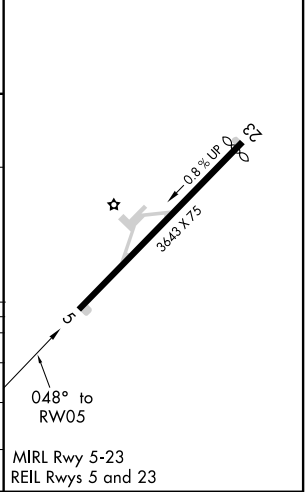


SE-1, 28 JAN 2021 to 25 FEB 2021

SE-1, 28 JAN 2021 to 25 FEB 2021



ELEV 1031	TDZE 1031
-----------	-----------



CATEGORY	A	B	C	D
LPV DA	1395-1½	364 (400-1½)		NA
LN/V VNAV DA	1538-1¾	507 (600-1¾)		NA
LN/V MDA	1680-1 649 (700-1)		1680-1½ 649 (700-1½)	NA
CIRCLING	1680-1 649 (700-1)		1680-2 649 (700-2)	NA

MIRL Rwy 5-23
REIL Rwy 5 and 23