

WAAS CH <b>72831</b> <b>W23A</b>	APP CRS <b>228°</b>	Rwy Idg TDZE Apt Elev	<b>3503</b> <b>1030</b> <b>1031</b>
--	------------------------	-----------------------------	---

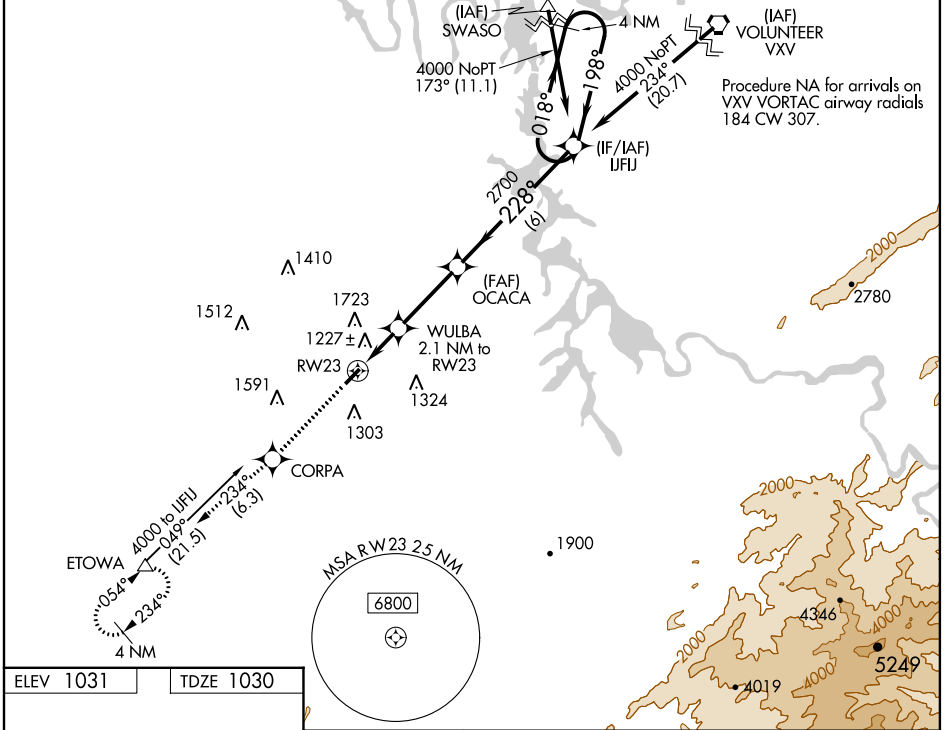
# RNAV (GPS) RWY 23

MONROE COUNTY (MNV)

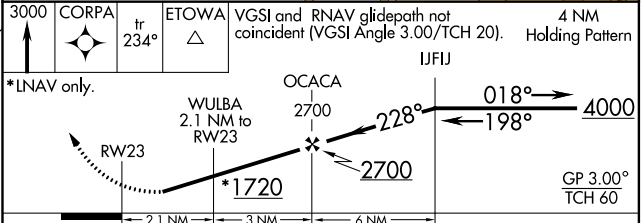
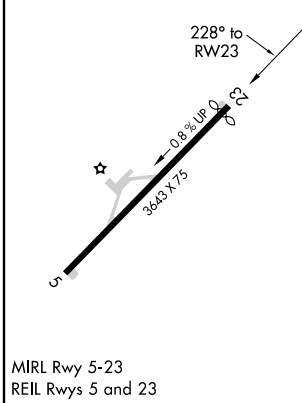
**NA** Baro-VNAV NA when using Mc Ghee Tyson altimeter setting. For uncompensated Baro-VNAV systems, LNAV/VNAV NA below -17°C (2°F) or above 54°C (130°F). Circling NA NW of Rwy 5-23. DME/DME RNP-0.3 NA. When local altimeter setting not received, use Mc Ghee Tyson altimeter setting and increase all DA 64 feet and all MDA 80 feet and increase LPV all Cats, LNAV/VNAV all Cats, LNAV Cat C, and Circling Cat C visibility ¼ mile. Helicopter visibility reduction below 1 SM not authorized. Procedure NA at night.

**MISSED APPROACH:**  
Climb to 3000  
direct CORPA on  
track 234° to  
ETOWA and hold.

AWOS-3 <b>118.475</b>	KNOXVILLE APP CON <b>123.9 353.6</b>	UNICOM <b>123.0</b> (CTAF)
--------------------------	---	-------------------------------



ELEV 1031	TDZE 1030
-----------	-----------



CATEGORY	A	B	C	D
LPV DA		1376-1 1/8	346 (400-1 1/8)	NA
LNAV/VNAV DA		1548-1 3/4	518 (600-1 3/4)	NA
LNAV MDA	1480-1	450 (500-1)	1480-1 3/8 450 (500-1 3/8)	NA
CIRCLING	1620-1	589 (600-1)	1620-1 1/2 589 (600-1 1/2)	NA

SE-1, 28 JAN 2021 to 25 FEB 2021

SE-1, 28 JAN 2021 to 25 FEB 2021