

NAPLES, FLORIDA

AL-6020 (FAA)

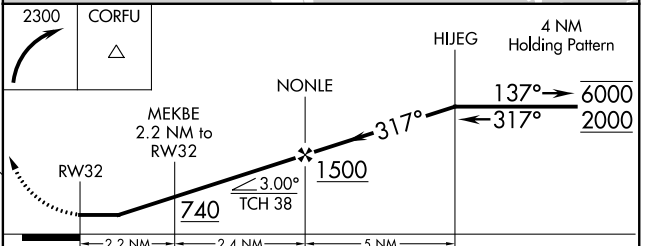
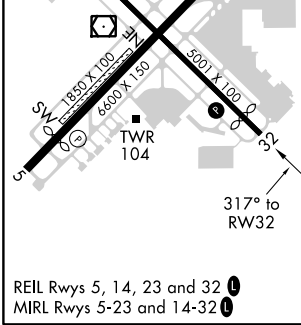
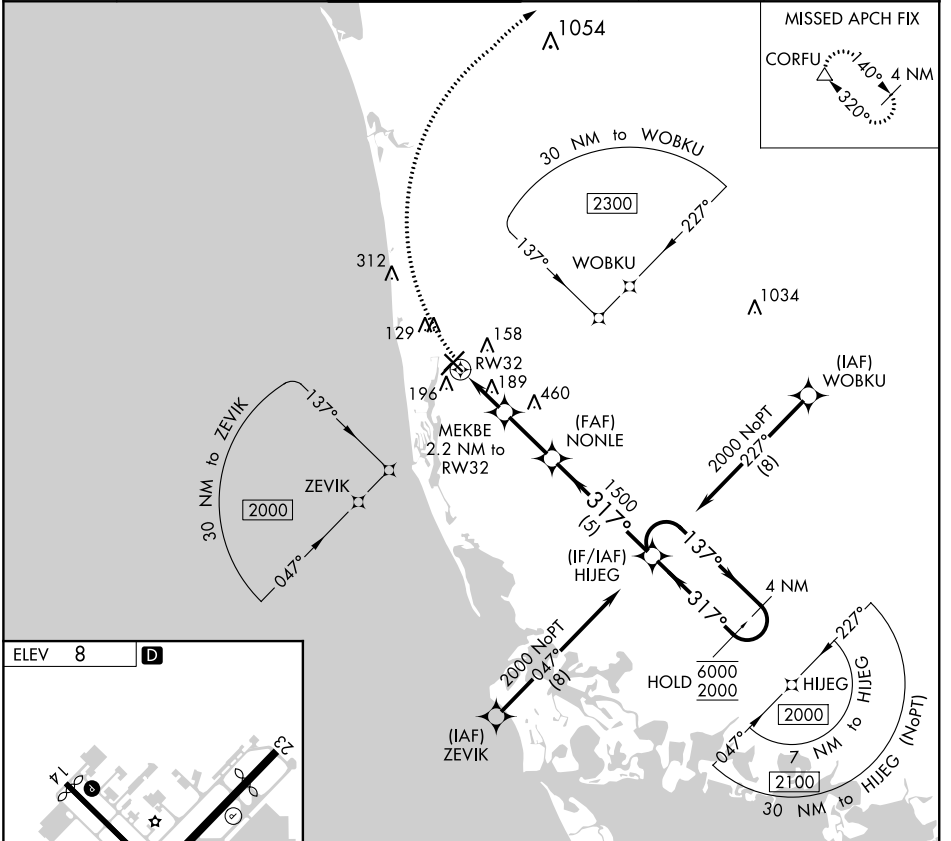
21028

APP CRS 317°	Rwy Idg TDZE Apt Elev	N/A N/A 8
------------------------	--------------------------	--------------------------------------

RNAV (GPS)-A

NAPLES MUNI (APF)

RNP APCH.			MISSED APPROACH: Climbing right turn to 2300 direct CORFU and hold.		
ATIS 134.225	FORT MYERS APP CON* 124.125 371.85	NAPLES TOWER* 128.5 (CTAF) 0	GND CON 121.6	CLNC DEL 118.0	CLNC DEL 124.125 (When twr closed)



CATEGORY	A	B	C	D
CIRCLING	580-1	572 (600-1)	680-2 672 (700-2)	820-2 ^{3/4} 812 (900-2 ^{3/4})

NAPLES, FLORIDA
Orig-B 28JAN21

26°09'N-81°47'W

NAPLES MUNI (APF)

RNAV (GPS)-A

SE-3, 28 JAN 2021 to 25 FEB 2021

SE-3, 28 JAN 2021 to 25 FEB 2021