

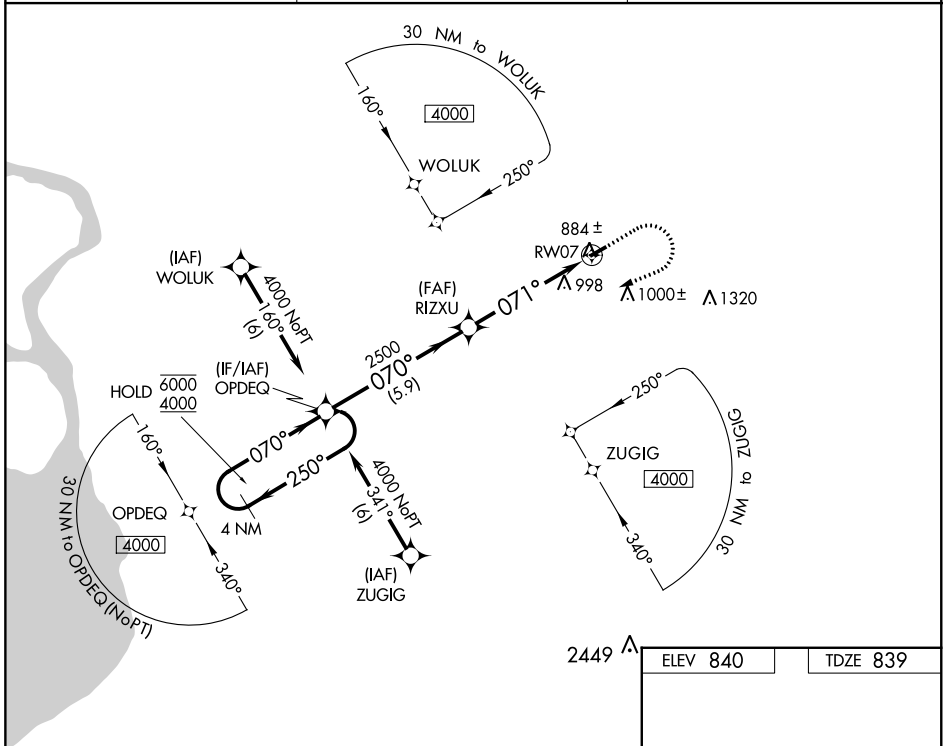
WAAS CH <b>93633</b> <b>W07A</b>	APP CRS <b>071°</b>	Rwy Idg TDZE Apt Elev	<b>3268</b> <b>839</b> <b>840</b>
--	------------------------	-----------------------------	---

# RNAV (GPS) RWY 7

AKRON/JESSON FIELD (9G3)

RNP APCH.	MISSED APPROACH: Climb to 1300 then climbing right turn to 4000 direct OPDEQ and hold, continue climb-in-hold to 4000.
▼ Procedure NA at night. Use Buffalo altimeter setting. ▲ NA Rwy 7 helicopter visibility reduction below 1 SM NA.	

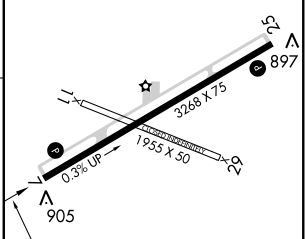
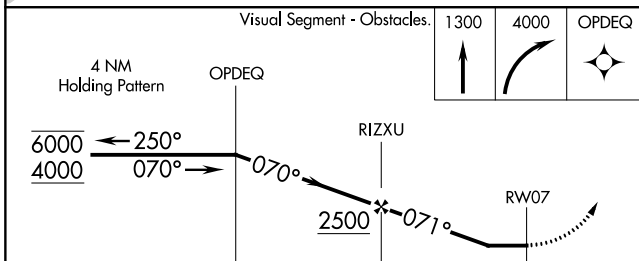
BUF ASOS <b>135.35</b>	BUFFALO APP CON <b>126.15 263.125</b>	UNICOM <b>122.725 (CTAF) 0</b>
---------------------------	--	-----------------------------------



NE-2, 28 JAN 2021 to 25 FEB 2021

NE-2, 28 JAN 2021 to 25 FEB 2021

2449	ELEV 840	TDZE 839
------	----------	----------



CATEGORY	A	B	C	D
LP MDA	1180-1	341 (400-1)		NA
LNNAV MDA	1300-1	461 (500-1)		NA
<b>C</b> CIRCLING	1380-1	540 (600-1)		NA

MIRL Rwy 7-25 <b>0</b>
REIL Rwy 25 <b>0</b>