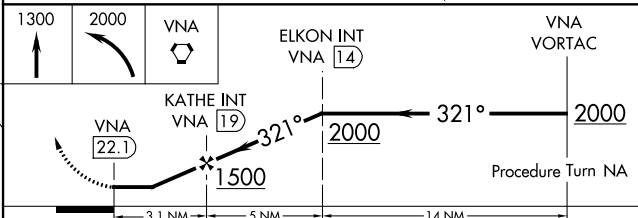
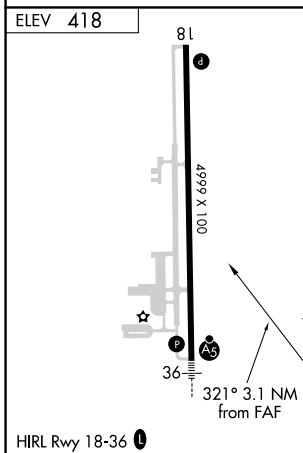
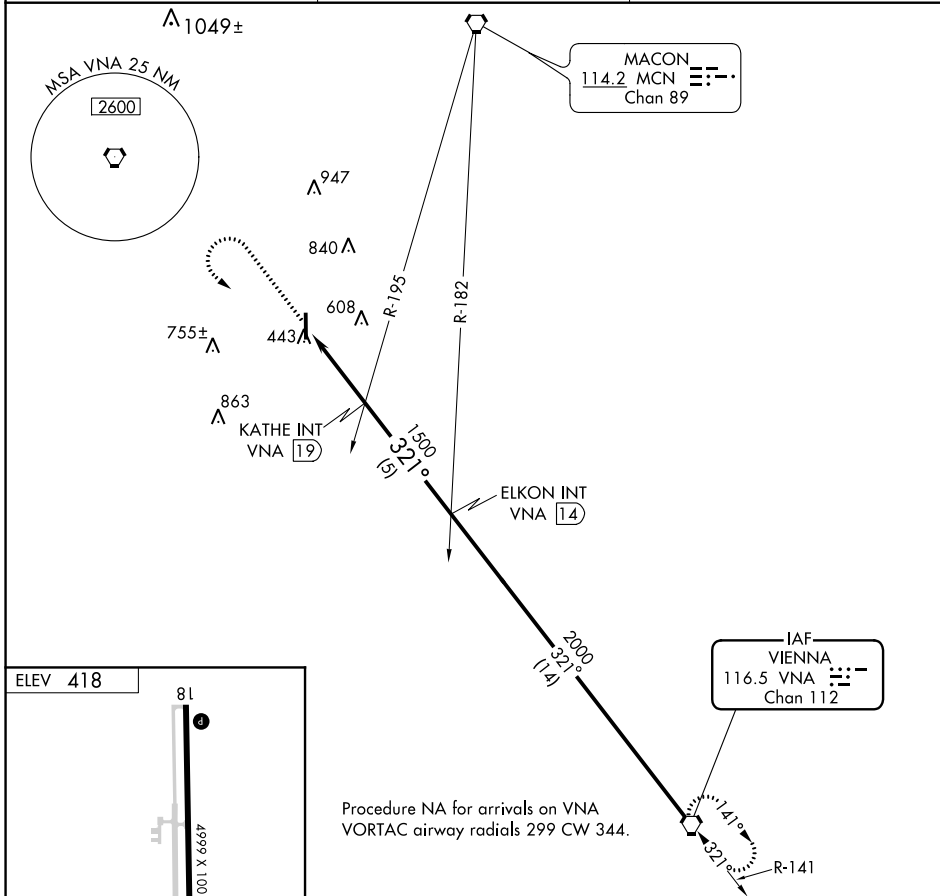


VORTAC VNA 116.5 Chan 112	APP CRS 321°	Rwy Idg TDZE Apt Elev	N/A N/A 418
---	------------------------	-----------------------------	--

VOR-A
PERRY-HOUSTON COUNTY (PXE)

NA If local altimeter setting not received, use Macon altimeter setting and increase all MDAs 40 feet. **MISSED APPROACH:** Climb to 1300 then climbing left turn to 2000 direct VNA VORTAC and hold.

AWOS-3 123.825	ATLANTA APP CON★ 124.2 279.6	UNICOM 122.725 (CTAF)
--------------------------	--	---------------------------------



FAF to MAP 3.1 NM						
Knots	60	90	120	150	180	
Min:Sec	3:06	2:04	1:33	1:14	1:02	
CATEGORY	A		B		C	D
CIRCLING	880-1		462 (500-1)		880-1½	980-2
					462 (500-1½)	562 (600-2)

SE-4, 28 JAN 2021 to 25 FEB 2021

SE-4, 28 JAN 2021 to 25 FEB 2021