

LOC/DME I-PVG <b>110.75</b> Chan 44 (Y)	APP CRS <b>102°</b>	Rwy ldg TDZE Apt Elev	<b>5350</b> <b>28</b> <b>28</b>
---	------------------------	-----------------------------	---------------------------------------

# ILS or LOC RWY 10

## HAMPTON ROADS EXECUTIVE (PVG)

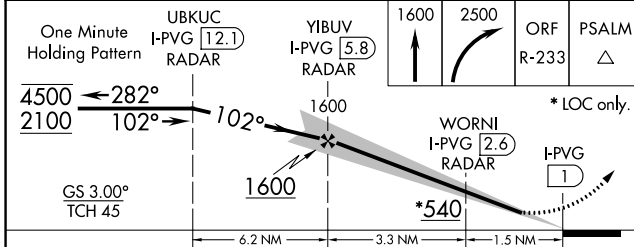
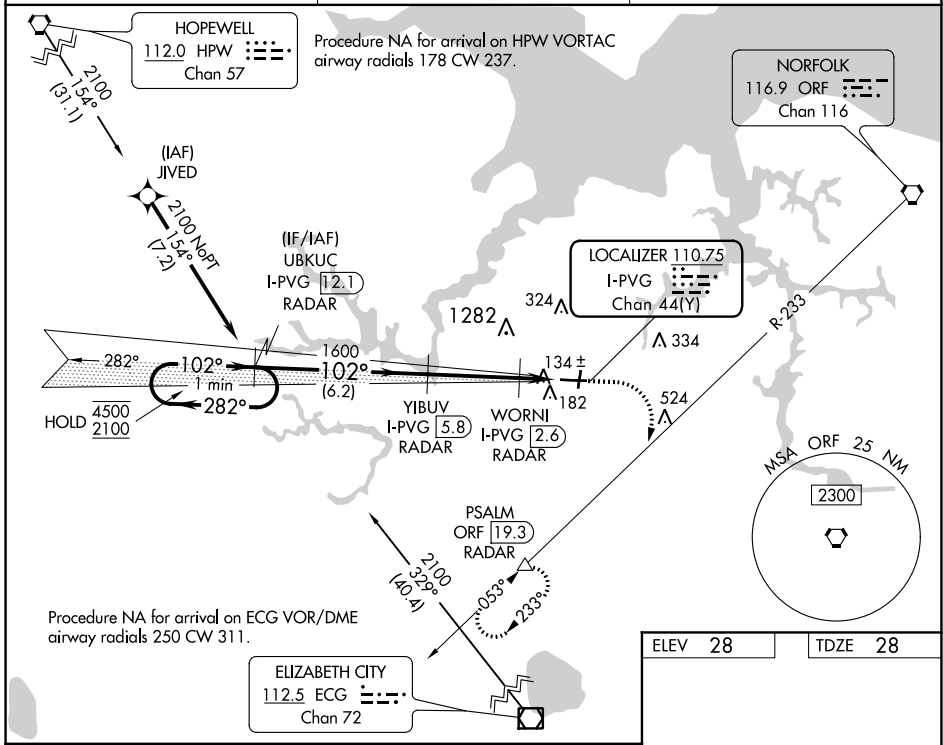
RNAV 1-GPS or RADAR required for procedure entry. DME or RADAR required.

**NA** Circling NA to Rwy 2 and 20. Circling NA for Cat C north of Rwy 10-28.

**NA** Autopilot coupled approach NA below 800.

MISSED APPROACH: Climb to 1600 then climbing right turn to 2500 on ORF VORTAC R-233 to PSALM/ORF 19.3 DME/RADAR and hold.

AWOS-3PT <b>118.375</b>	NORFOLK APP CON <b>118.9 353.7</b>	UNICOM <b>122.725</b> (CTAF) <b>0</b>
----------------------------	---------------------------------------	--



ELEV 28	TDZE 28
HIRL Rwy 10-28 <b>1</b> REIL Rwy 10 and 28 <b>1</b> MIRL Rwy 2-20 <b>1</b>	
FAF to MAP 4.8 NM	
Knots	60 90 120 150 180
Min:Sec	4:48 3:12 2:24 1:55 1:36

CATEGORY	A	B	C	D
S-ILS 10	228- <sup>3</sup> / <sub>4</sub>	200 (200- <sup>3</sup> / <sub>4</sub> )		NA
S-LOC 10	400-1	372 (400-1)		NA
<b>C</b> CIRCLING	500-1	472 (500-1)	780-2 <sup>1</sup> / <sub>4</sub> 752 (800-2 <sup>1</sup> / <sub>4</sub> )	NA

NE-3, 28 JAN 2021 to 25 FEB 2021

NE-3, 28 JAN 2021 to 25 FEB 2021