

(LURIC7.LURIC) 19115

AL-5757 (FAA)

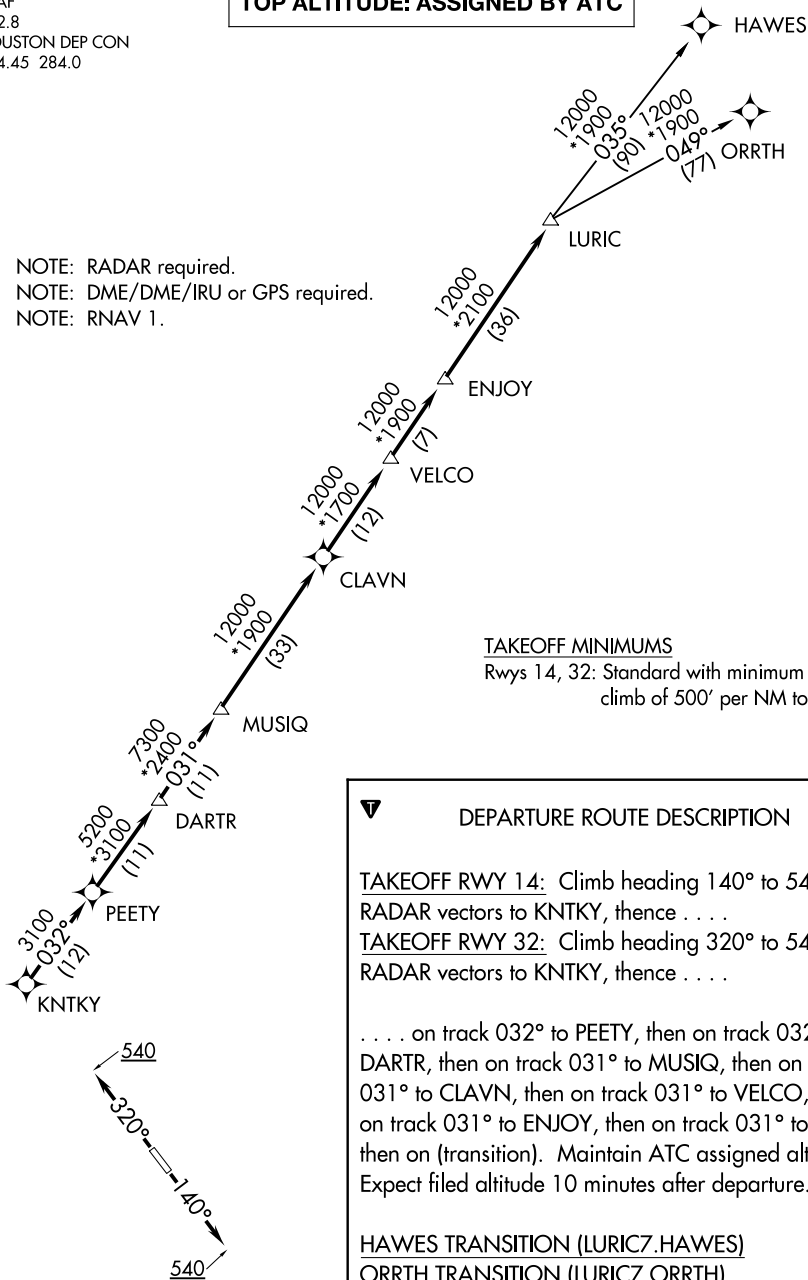
BAYTOWN (HPY)  
BAYTOWN, TEXAS

# LURIC SEVEN DEPARTURE (RNAV)

CTAF  
122.8  
HOUSTON DEP CON  
134.45 284.0

**TOP ALTITUDE: ASSIGNED BY ATC**

NOTE: RADAR required.  
NOTE: DME/DME/IRU or GPS required.  
NOTE: RNAV 1.



### TAKEOFF MINIMUMS

Rwys 14, 32: Standard with minimum climb of 500' per NM to 540.

### DEPARTURE ROUTE DESCRIPTION

TAKEOFF RWY 14: Climb heading 140° to 540 for RADAR vectors to KNTKY, thence . . .

TAKEOFF RWY 32: Climb heading 320° to 540 for RADAR vectors to KNTKY, thence . . .

. . . on track 032° to PEETY, then on track 032° to DARTR, then on track 031° to MUSIQ, then on track 031° to CLAVN, then on track 031° to VELCO, then on track 031° to ENJOY, then on track 031° to LURIC, then on (transition). Maintain ATC assigned altitude. Expect filed altitude 10 minutes after departure.

HAWES TRANSITION (LURIC7.HAWES)

ORRTH TRANSITION (LURIC7.ORRTH)

NOTE: Chart not to scale.

LURIC SEVEN DEPARTURE (RNAV)

(LURIC7.LURIC) 25APR19

BAYTOWN, TEXAS  
BAYTOWN (HPY)

SC-5, 28 JAN 2021 to 25 FEB 2021

SC-5, 28 JAN 2021 to 25 FEB 2021