

LOC I-DRT 111.9 Chan 56	APP CRS 132°	Rwy Idg TDZE Apt Elev	6000 1002 1002
---	------------------------	-----------------------------	---

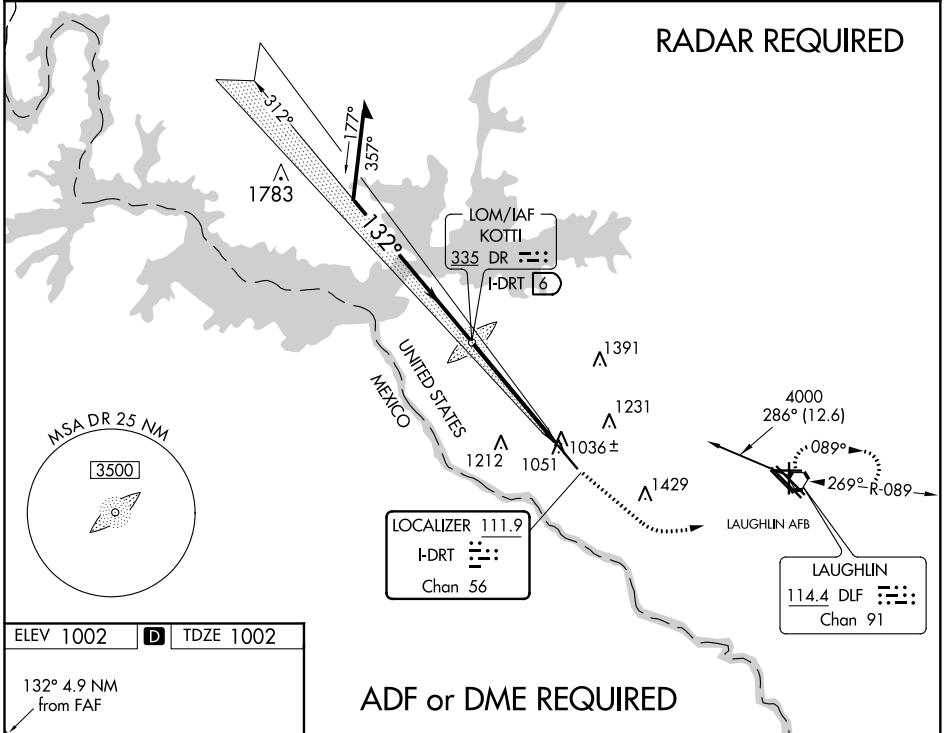
ILS or LOC RWY 13

DEL RIO INTL (DRT)

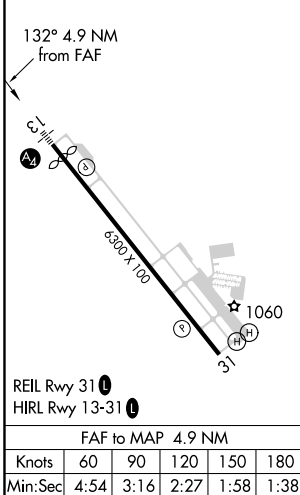
NA Circling NA for Cat D SW of Rwy 13-31. When local altimeter setting not received, use Laughlin AFB altimeter setting and increase all DAs 30 feet, all MDAs 40 feet, increase S-LOC 13 Cat D and Circling Cat D visibility ¼ mile. VDP NA when using Laughlin AFB altimeter setting.

MALS MISSED APPROACH: Climb to 2000 via heading 122° then climbing left turn to 4000 direct DLF VORTAC and hold. Continue climb-in-hold to 4000.

ASOS 118.525	DEL RIO APP CON ★ 119.6 259.1	CLNC DEL 120.5	UNICOM 122.8 (CTAF)
------------------------	---	--------------------------	-------------------------------



ELEV 1002	D	TDZE 1002
-----------	----------	-----------



Remain within 10 NM	DR KOTTI LOM I-DRT 6		2000 hdg 122°	4000	DLF
	312°		2673	I-DRT 2.3	I-DRT 1.2
3200		2700		3.7 NM	
GS 3.00° TCH 48		132°		1.2	
CATEGORY	A	B	C	D	
S-ILS 13	1202-¾ 200 (200-¾)				
S-LOC 13	1420-½	418 (500-½)	1420-¾	418 (500-¾)	
CIRCLING	1440-1 438 (500-1)	1460-1 458 (500-1)	1560-1½ 558 (600-1½)	1640-2 638 (700-2)	

SC-3, 28 JAN 2021 to 25 FEB 2021

SC-3, 28 JAN 2021 to 25 FEB 2021