

LOC I-POC 110.5	APP CRS 259°	Rwy Idg TDZE Apt Elev 4151 1005 1014
---------------------------	------------------------	--

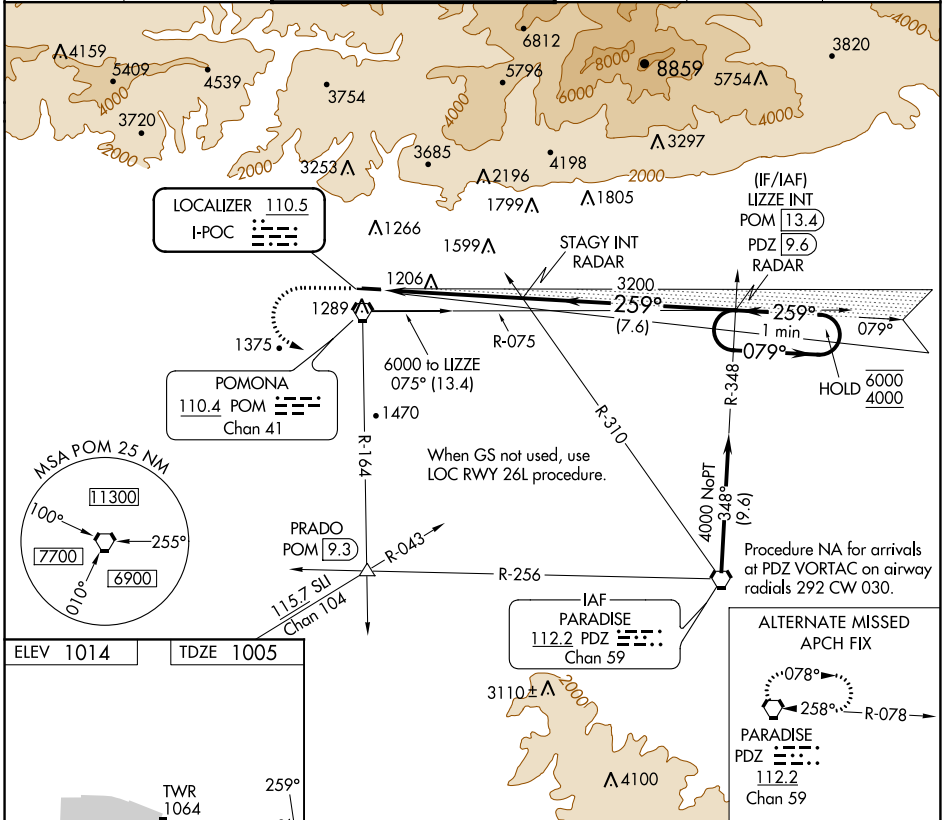
ILS RWY 26L

BRACKETT FIELD (POC)

▼ Rwy 26L helicopter visibility reduction below 3/4 SM NA.
▲ When local altimeter setting not received, use Ontario Intl altimeter setting and increase DA to 1364.

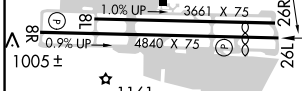
MISSED APPROACH: Climb to 2100 then climbing left turn to 4000 on POM VORTAC R-164 to PRADO INT/POM 9.3 DME.

ATIS 124.4	SOCAL APP CON 125.5 318.2	BRACKETT TOWER* RWY 8R/26L 118.2 (CTAF)	RWY 8L/26R 133.3	GND CON 125.0	CLNC DEL 121.875	UNICOM 122.95
----------------------	-------------------------------------	--	----------------------------	-------------------------	----------------------------	-------------------------

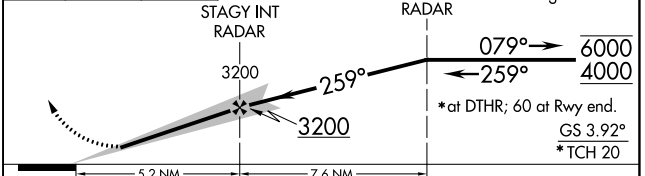


SW-3, 28 JAN 2021 to 25 FEB 2021

SW-3, 28 JAN 2021 to 25 FEB 2021



ELEV 1014	TDZE 1005	PRADO	VGSI and ILS glidepath not coincident (VGSI Angle 3.76/TCH 18).	LIZZE INT PDZ 9.6 RADAR	One Minute Holding Pattern
-----------	-----------	-------	---	-------------------------	----------------------------



REIL Rws 8R and 26L MIRL Rwy 8R-26L	CATEGORY	A	B	C	D
	S-ILS 26L	1332-1	327 (400-1)		NA