

WAPAX TWO DEPARTURE (WAPAX2 • WAPAX) SH-1729 [USAF]

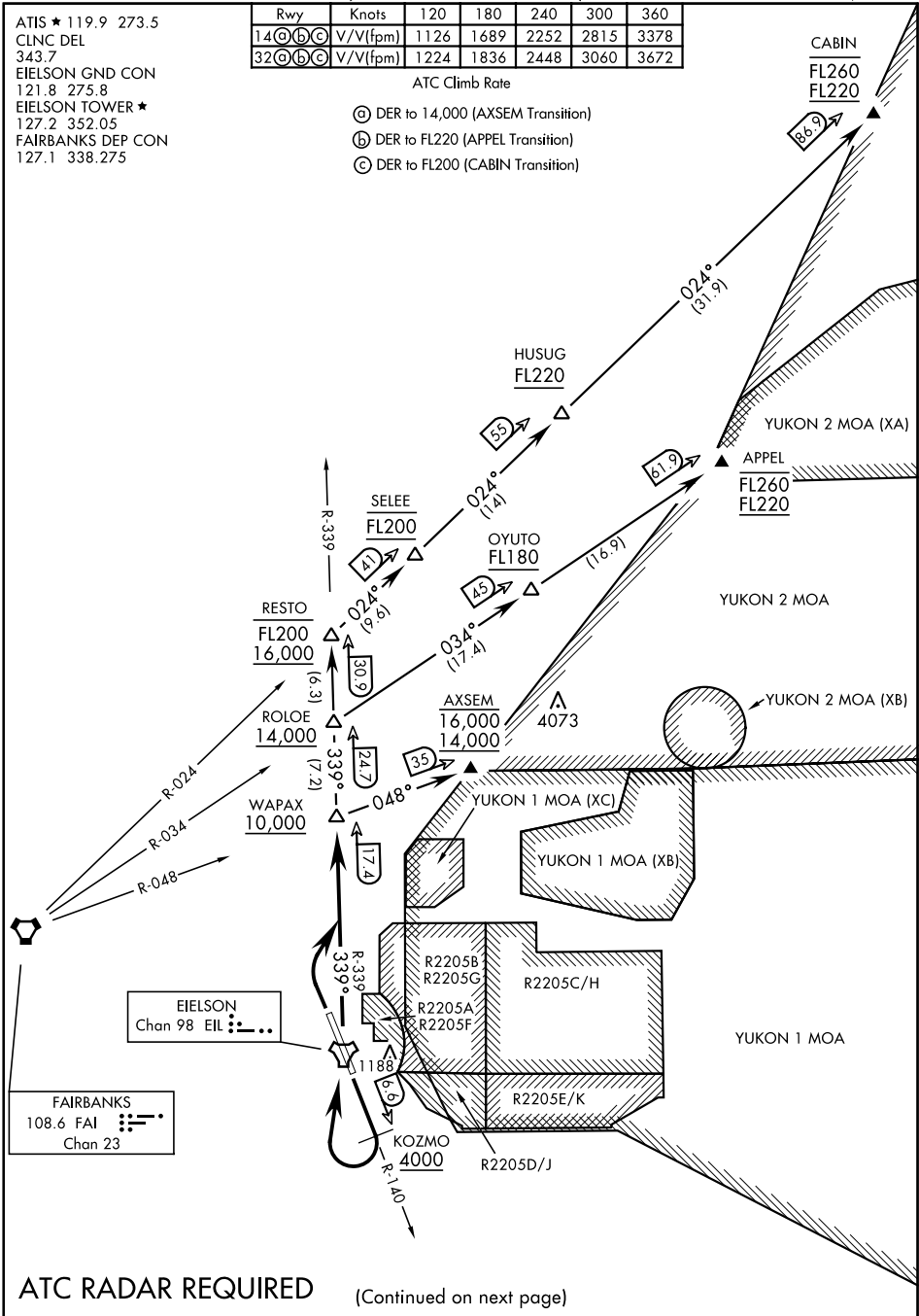
EIELSON AFB (PAEI)
FAIRBANKS, ALASKA

ATIS ★ 119.9 273.5
CLNC DEL
343.7
EIELSON GND CON
121.8 275.8
EIELSON TOWER ★
127.2 352.05
FAIRBANKS DEP CON
127.1 338.275

Rwy	Knots	120	180	240	300	360
14 (C)(C)(C)	V/V(fpm)	1126	1689	2252	2815	3378
32 (C)(C)(C)	V/V(fpm)	1224	1836	2448	3060	3672

ATC Climb Rate

- ⓐ DER to 14,000 (AXSEM Transition)
- ⓑ DER to FL220 (APPEL Transition)
- ⓒ DER to FL200 (CABIN Transition)



AK, 28 JAN 2021 to 25 FEB 2021

AK, 28 JAN 2021 to 25 FEB 2021

ATC RADAR REQUIRED

(Continued on next page)

WAPAX TWO DEPARTURE (WAPAX2 • WAPAX)

FAIRBANKS, ALASKA
EIELSON AFB (PAEI)