

FAIRBANKS, ALASKA

RNAV (GPS) RWY 32

APCH CRS	Rwy Idg	14,530
320°	TDZE	548
	Arpt Elev	548

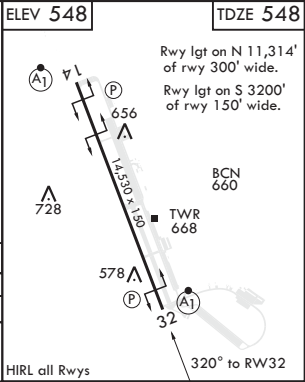
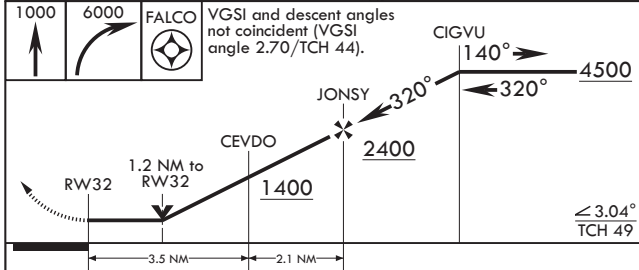
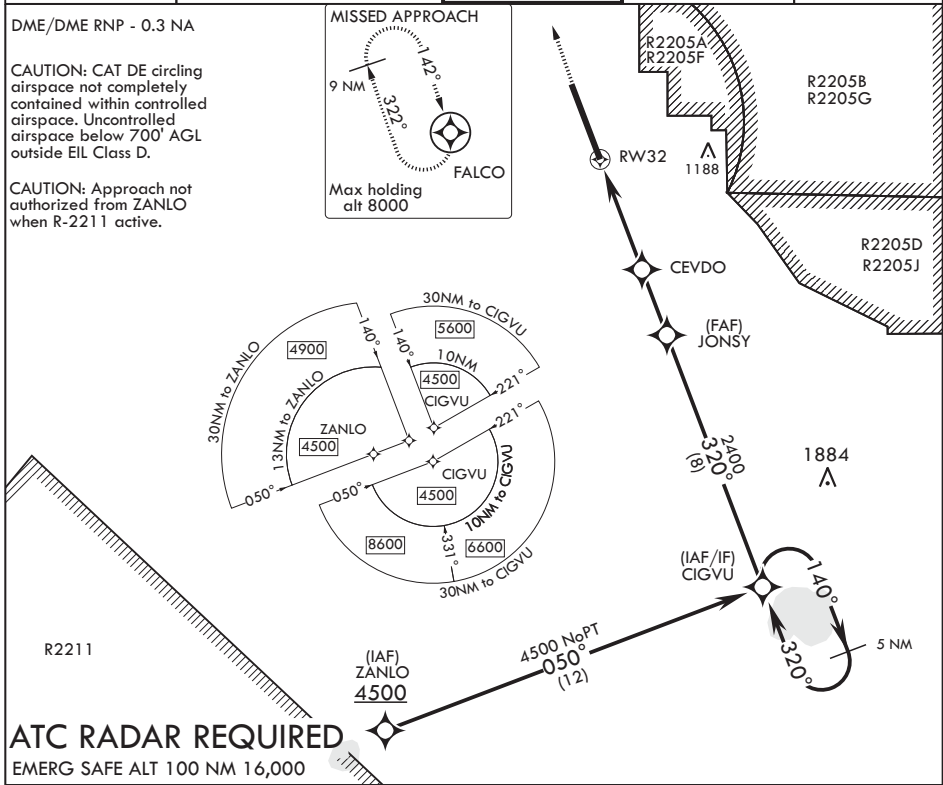
AL-1729 (USAF)

EIELSON AFB (PAEI)

⚠ * When ALS inop, increase CAT AB RVR to 55 and vis to 1 mile, CAT CDE RVR to 60 and vis to 1 1/8 miles.
 ** Circling not authorized E Rwy 14-32.

ALSF-1 MISSED APPROACH: Climb to 1000, then climbing right turn to 6000 direct FALCO and hold, continue climb-in-hold to 6000.

ATIS* 119.9 273.5	FAIRBANKS APP CON 125.35 363.2 180°-359° 127.1 251.1 360°-179°	TOWER* 127.2 352.05	GND CON 121.8 275.8	CLNC DEL 343.7
-----------------------------	---	-------------------------------	-------------------------------	--------------------------



CATEGORY	A	B	C	D	E
LNVA MDA*	940/24 392 (400-½)		940/35 392		(400-¾)
C CIRCLING**	1000-1 452 (500-1)	1060-1 512 (600-1)	1100-1½ 552 (600-1½)	1260-2¼ 712 (800-2¼)	1260-2½ 712 (800-2½)

AK, 28 JAN 2021 to 25 FEB 2021

AK, 28 JAN 2021 to 25 FEB 2021