

FAIRBANKS, ALASKA

RNAV (GPS) RWY 14

APCH CRS 140°	Rwy Idg 14,530
	TDZE 537
	Arprt Elev 548

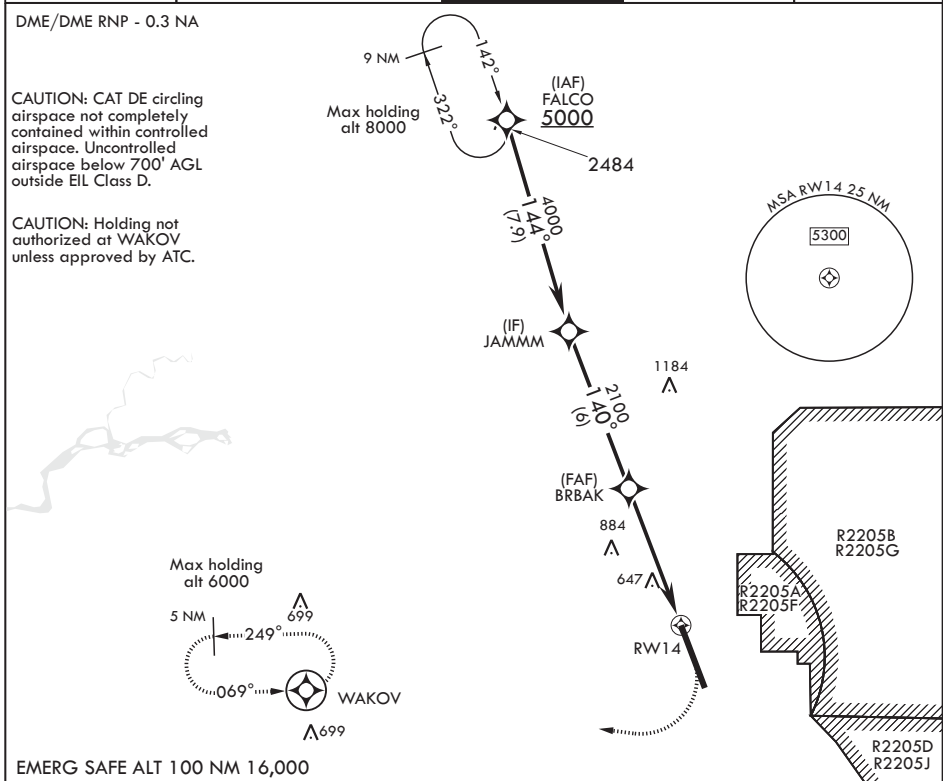
AL-1729 (USAF)

EIELSON AFB (PAEI)

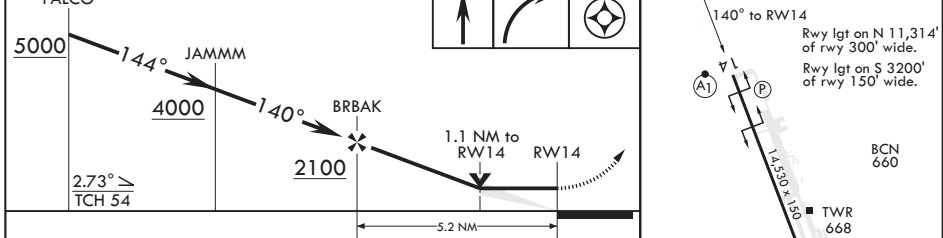
V * When ALS inop, increase RVR to 55 and vis to 1 mile.
** Circling not authorized E Rwy 14-32.

ALSF-1 MISSED APPROACH: Climb to 1000 then climbing right turn to 4000 direct WAKOV and hold, continue climb-in-hold to 4000.

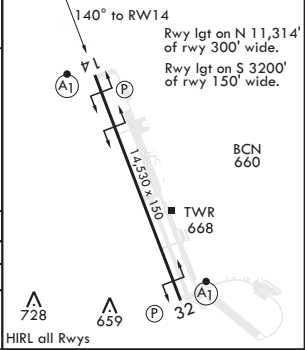
ATIS* 119.9 273.5	FAIRBANKS APP CON 125.35 363.2 180°-359° 127.1 251.1 360°-179°	TOWER* 127.2 352.05	GND CON 121.8 275.8	CLNC DEL 343.7
------------------------------------	---	--------------------------------------	--------------------------------------	---------------------------------



EMERG SAFE ALT 100 NM 16,000



CATEGORY	A	B	C	D	E
LNAV MDA*	900/24 363 (400-½)		900/35 363		(400-¾)
C CIRCLING**	1000-1 452 (500-1)	1060-1 512 (600-1)	1100-1½ 552 (600-1½)	1260-2¼ 712 (800-2¼)	1260-2½ 712 (800-2½)



FAIRBANKS, ALASKA
Amdt 5 08NOV18
TERPS

64°40'N - 147°06'W

EIELSON AFB (PAEI)

RNAV (GPS) RWY 14

AK, 28 JAN 2021 to 25 FEB 2021

AK, 28 JAN 2021 to 25 FEB 2021