

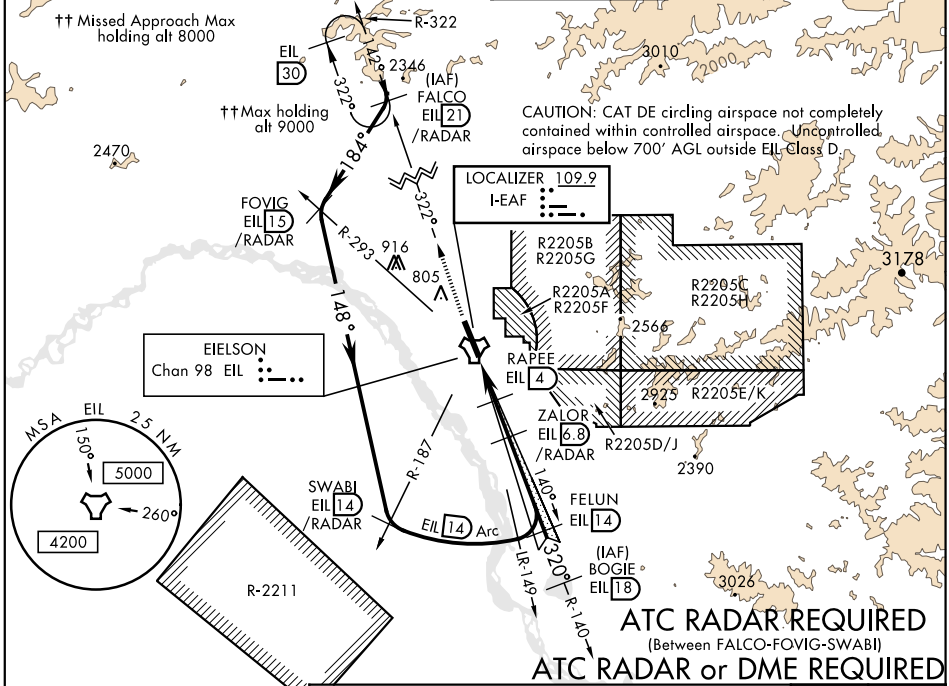
ILS or LOC/DME RWY 32

LOC I-EAF 109.9	APCH CRS 320°	Rwy Ldg 14,530 TDZE 548 Arprt Elev 548	AL-1729 [USAF]	EIELSON AFB (PAEI)
---------------------------	-------------------------	--	----------------	--------------------

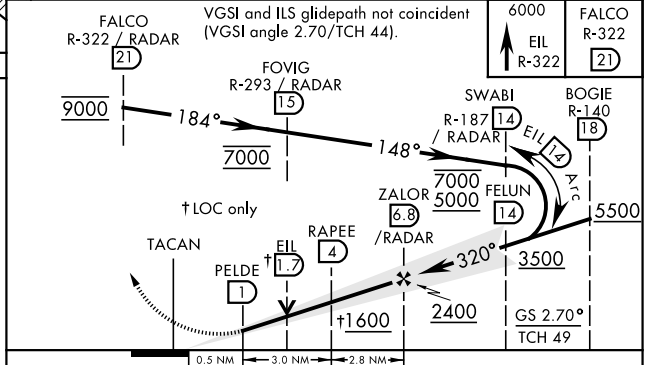
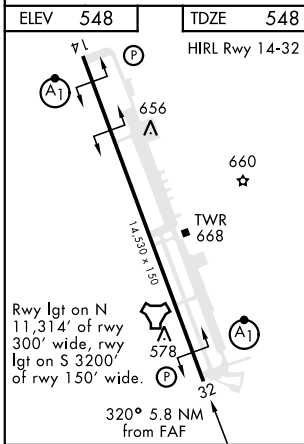
▼* When ALS inop, increase RVR to 40 and vis to ¼ mile. ALSF-1
 ** When ALS inop, increase CAT AB RVR to 55 and vis to 1 mile; CAT CDE RVR to 60 and vis to 1½ mile.
 *** Circling not authorized E of Rwy 14-32.

MISSED APPROACH: Climb to 6000 on EIL TACAN R-322 to FALCO and hold. Continue climb-in-hold to 6000.

ATIS ★ 119.9 273.5	ASOS 118.525	FAIRBANKS APP CON 127.1 251.1 (360°-179°) 125.35 363.2 (180°-359°)	EIELSON TOWER ★ 127.2 352.05	GND CON 121.8 275.8	CLNC DEL 343.7
------------------------------	------------------------	--	--	-------------------------------	--------------------------



EMERG SAFE ALT 100 NM 16,000



CATEGORY	A	B	C	D	E
S-ILS 32*	748/24 200 (200-½)				
S-LOC 32**	940/24	392 (400-½)	940/35	392	(400-¾)
CIRCLING ***	1000-1 452 (500-1)	1060-1 512 (600-1)	1100-1½ 552 (600-1½)	1260-2½ 712 (800-2½)	1260-2½ 712 (800-2½)

ILS or LOC/DME RWY 32

AK, 28 JAN 2021 to 25 FEB 2021

AK, 28 JAN 2021 to 25 FEB 2021