

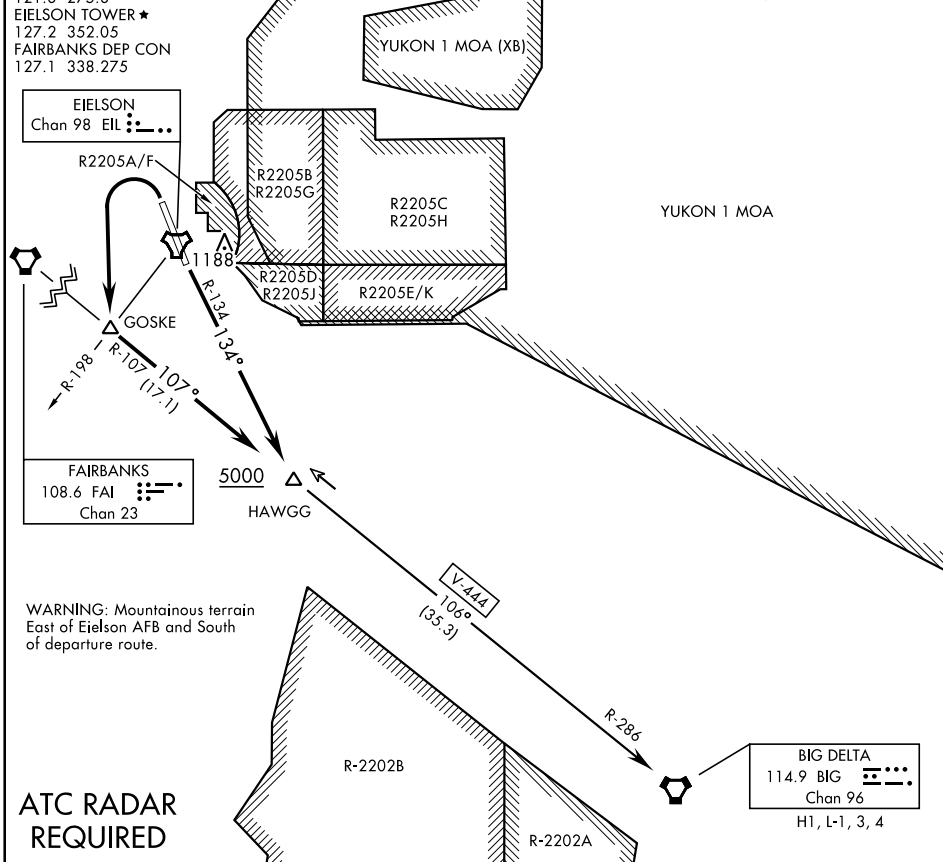
HAWGG SEVEN DEPARTURE (HAWGG7•HAWGG)

EIELSON AFB (PAEI)

FAIRBANKS, ALASKA

| ATIS ★ 119.9 273.5 | SHL-1729 [USAF] | YUKON 2 MOA | Rwy | Knots | 60 | 120 | 180 | 240 | 300 | 360 |
|--------------------------------|-----------------|-------------|-----|----------|-----|-----|-----|-----|------|------|
| CLINC DEL 343.7 | | | 32 | V/V(fpm) | 214 | 428 | 642 | 856 | 1070 | 1284 |
| EIELSON GND CON 121.8 275.8 | | | 14 | V/V(fpm) | 241 | 482 | 723 | 964 | 1205 | 1446 |

ATC Climb Rate to 5000



ATC RADAR REQUIRED

DEPARTURE ROUTE DESCRIPTION

TAKE-OFF RWY 14: Turn left to join EIL TACAN R-134 to FAI VORTAC R-107. Cross HAWGG at or above 5000. Thence . . .

TAKE-OFF RWY 32: Turn left to GOSKE then continue outbound FAI VORTAC R-107 to HAWGG. Cross HAWGG at or above 5000. Thence . . .

Intercept V-444 to BIG VORTAC, then via assigned route.

HAWGG SEVEN DEPARTURE (HAWGG7•HAWGG)

FAIRBANKS, ALASKA

EIELSON AFB (PAEI)