

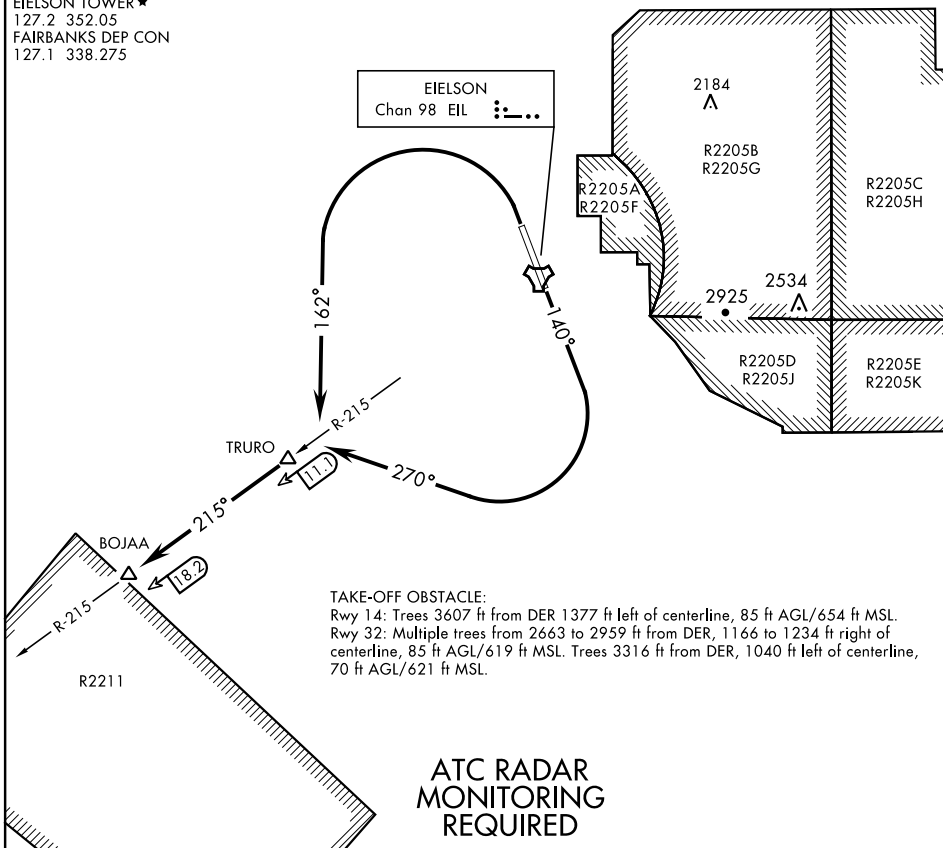
# BOJAA TWO DEPARTURE (BOJAA2•BOJAA)

EIELSON AFB (PAEI)

FAIRBANKS, ALASKA

ATIS ★ 119.9 273.5  
 CLNC DEL 343.7  
 GND CON 121.8 275.8  
 EIELSON TOWER ★ 127.2 352.05  
 FAIRBANKS DEP CON 127.1 338.275

SL-1729 [USAF]



### TAKE-OFF OBSTACLE:

Rwy 14: Trees 3607 ft from DER 1377 ft left of centerline, 85 ft AGL/654 ft MSL.  
 Rwy 32: Multiple trees from 2663 to 2959 ft from DER, 1166 to 1234 ft right of centerline, 85 ft AGL/619 ft MSL. Trees 3316 ft from DER, 1040 ft left of centerline, 70 ft AGL/621 ft MSL.

## ATC RADAR MONITORING REQUIRED



### DEPARTURE ROUTE DESCRIPTION

TAKE-OFF RWY 14: Climb heading 140° to 1100, then climbing right turn to heading 270°, intercept EIL TACAN R-215 outbound to BOJAA. Climb and maintain 3700 or assigned altitude.

TAKE-OFF RWY 32: Climbing left turn to heading 162° to TRURO then continue outbound on EIL TACAN R-215 to BOJAA. Maintain at or above 3700 or assigned altitude.

# BOJAA TWO DEPARTURE (BOJAA2•BOJAA)

Orig 26MAR20

FAIRBANKS, ALASKA

EIELSON AFB (PAEI)

AK, 28 JAN 2021 to 25 FEB 2021

AK, 28 JAN 2021 to 25 FEB 2021