

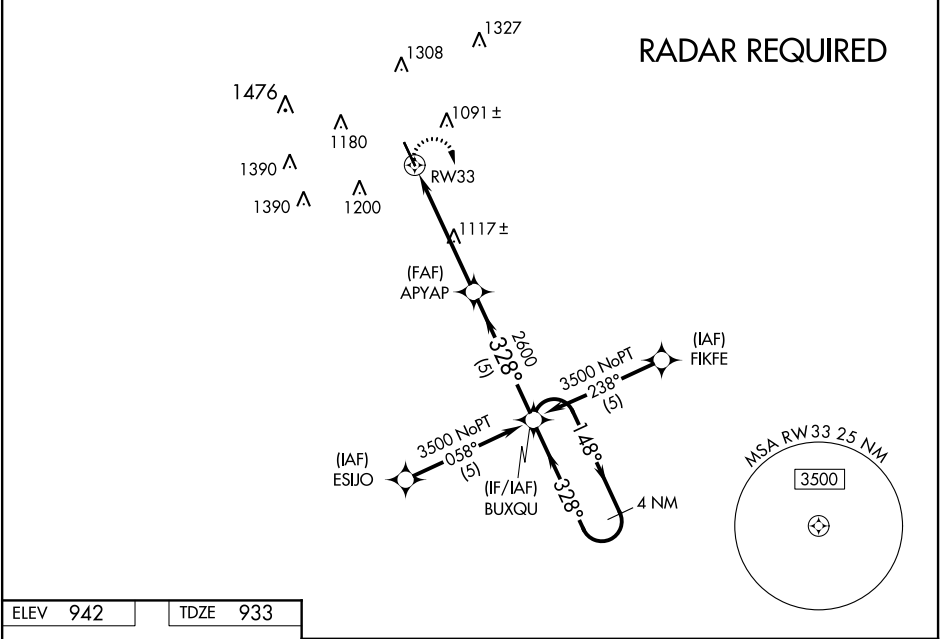
APP CRS 328°	Rwy Idg 5256 TDZE 933 Apt Elev 942
------------------------	---

RNAV (GPS) RWY 33

GARNER FIELD (UVA)

<p>▼ ▲</p>	<p>When local altimeter setting not received, use South Texas Rgnl at Hondo altimeter setting and increase all MDA 100 feet and increase LNAV Cat C and D and Circling Cat C visibility ¼ mile. DME/DME RNP-0.3 NA.</p>	<p>MISSED APPROACH: Climbing right turn to 3500 direct BUXQU WP and hold.</p>
------------------------------	---	---

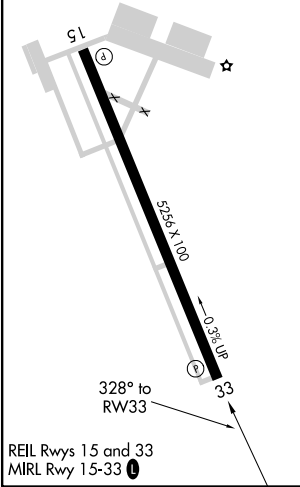
<p>AWOS-3 124.175</p>	<p>HOUSTON CENTER 134.95 269.4</p>	<p>UNICOM 122.8 (CTAF) 0</p>
----------------------------------	---	---



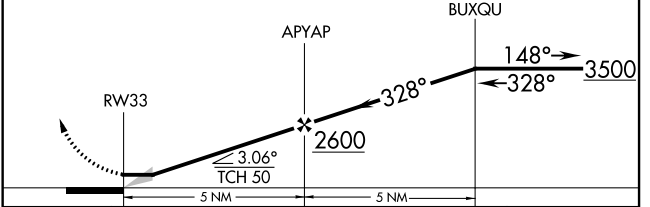
SC-3, 28 JAN 2021 to 25 FEB 2021

SC-3, 28 JAN 2021 to 25 FEB 2021

ELEV 942	TDZE 933
-----------------	-----------------



<p>3500</p>	<p>BUXQU</p>	<p>VGSI and descent angle not coincident (VGSI Angle 3.00/TCH 35).</p>	<p>4 NM Holding Pattern</p>
-------------	--------------	--	---------------------------------



CATEGORY	A	B	C	D
GLS DA	NA			
LNAV/VNAV DA	NA			
LNAV MDA	1380-1 447 (500-1)	1380-1¼ 447 (500-1¼)	1380-1½ 447 (500-1½)	1380-1½ 447 (500-1½)
CIRCLING	1380-1 438 (500-1)	1460-1 518 (600-1)	1460-1½ 518 (600-1½)	1500-2 558 (600-2)