

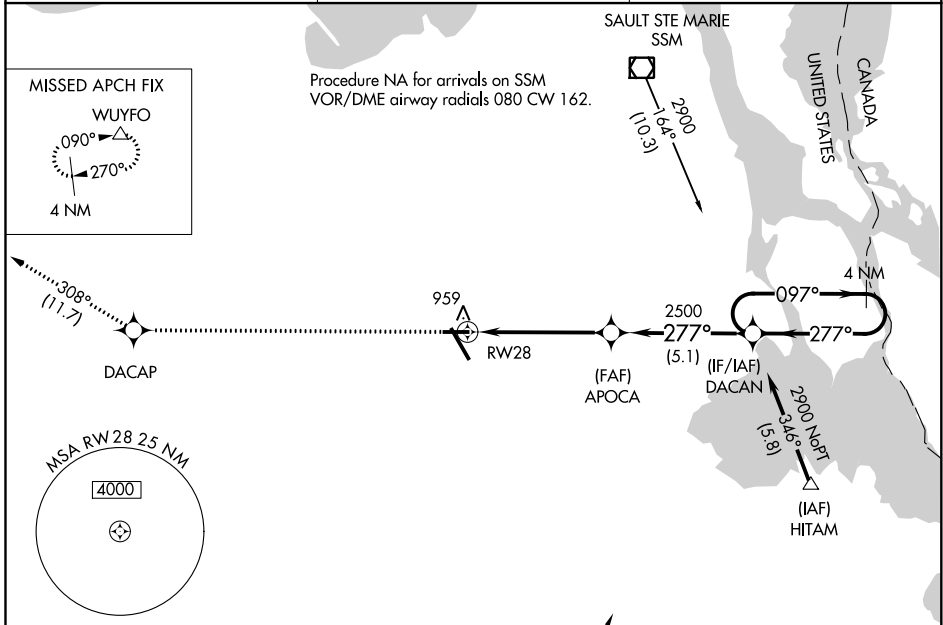
# RNAV (GPS) RWY 28

CHIPPEWA COUNTY INTL (CIU)

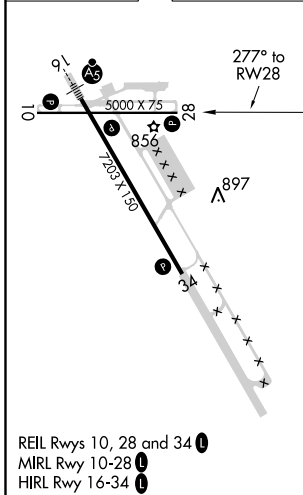
APP CRS <b>277°</b>	Rwy Idg TDZE Apt Elev	<b>5000</b> <b>799</b> <b>799</b>
------------------------	-----------------------------	---

RNP APCH.	TORONTO CENTER <b>132.65 344.5</b>	UNICOM <b>123.0 (CTAF)</b>
<p><b>⚠</b> Rwy 28 helicopter visibility reduction below 1 SM NA. When local altimeter setting not received, use Sault Ste Marie Muni/Sanderson Field altimeter setting; increase all MDA 60 feet, increase LNAV and Circling visibility Cat C/D ¼ SM. Straight-in and Circling Rwy 28 NA at night.</p>		<p>MISSED APPROACH: Climb to 3000 direct DACAP and track 308° to WUYFO and hold.</p>

AWOS-3PT <b>127.575</b>	TORONTO CENTER <b>132.65 344.5</b>	UNICOM <b>123.0 (CTAF)</b>
----------------------------	---------------------------------------	-------------------------------



ELEV 799	<b>D</b> TDZE 799
----------	-------------------



3000	DACAP	ir 308°	WUYFO	DACAN	4 NM Holding Pattern
			APOCA		
	RW28		2500	277°	097° → 2900
		3.05° TCH 40			← 277°
		5.1 NM		5.1 NM	

CATEGORY	A	B	C	D
LNAV MDA	1220-1	421 (500-1)	1220-1½	421 (500-1½)
<b>C</b> CIRCLING	1260-1	461 (500-1)	1260-1½	1360-2
			461 (500-1½)	561 (600-2)

EC-1, 28 JAN 2021 to 25 FEB 2021

EC-1, 28 JAN 2021 to 25 FEB 2021