

LOM CI 400	APP CRS 337°	Rwy Idg 7203
		TDZE 796
		Apt Elev 799

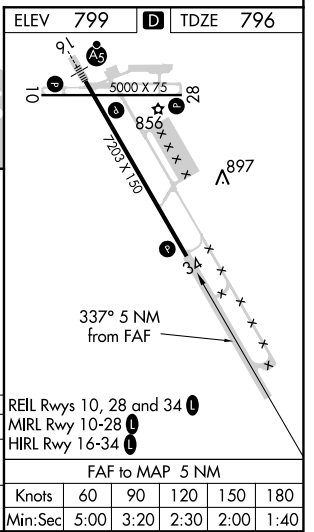
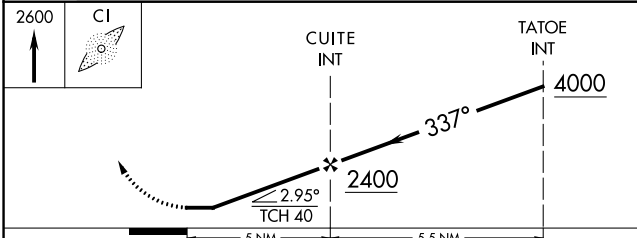
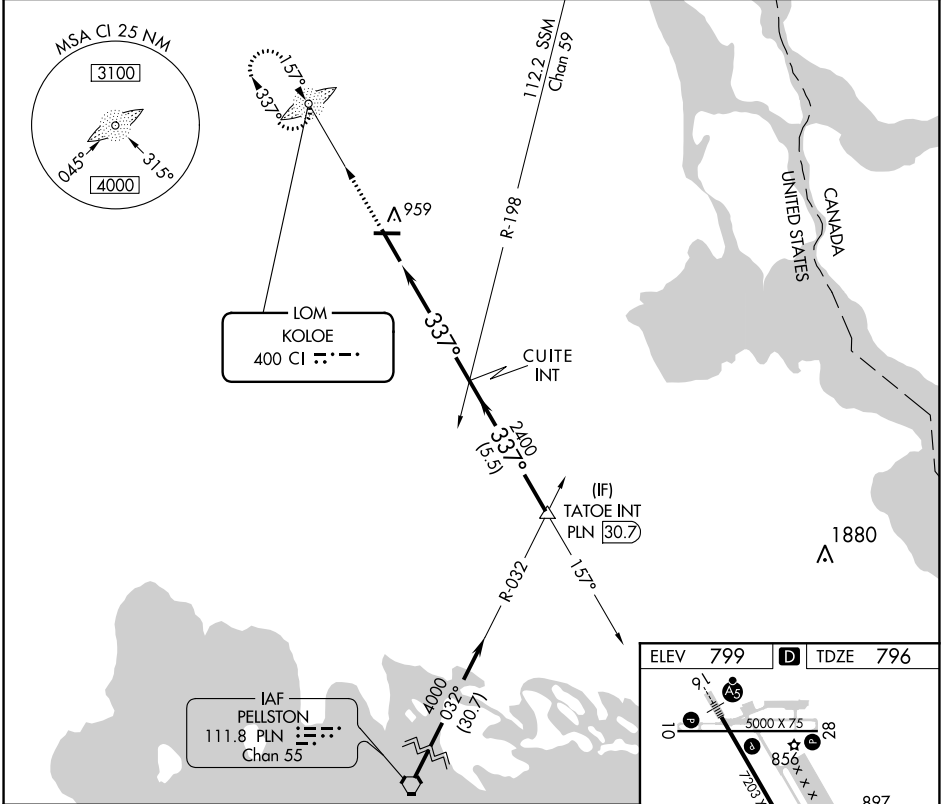
NDB RWY 34

CHIPPEWA COUNTY INTL (CIU)

⚠ When local altimeter setting not received, use Sault-Ste Marie Muni/Sanderson Field altimeter setting and increase all MDA 60 feet and increase S-34 Cat C/D visibility to 1 3/8.

⚠ NA MISSED APPROACH: Climb to 2600 direct KOLOE LOM and hold.

AWOS-3PT 127.575	TORONTO CENTER 132.65 344.5	UNICOM 123.0 (CTAF)
----------------------------	---------------------------------------	-------------------------------



CATEGORY	A	B	C	D
S-34	1220-1	424 (500-1)	1220-1 1/4	424 (500-1 1/4)
C CIRCLING	1260-1	461 (500-1)	1260-1 1/2	1360-2 461 (500-1 1/2) 561 (600-2)

EC-1, 28 JAN 2021 to 25 FEB 2021

EC-1, 28 JAN 2021 to 25 FEB 2021