


WAAS CH 82202 W15A	APP CRS 155°	Rwy ldg 6224 TDZE 643 Apt Elev 645
--	------------------------	---

RNAV (GPS) RWY 15

ADDISON (ADS)

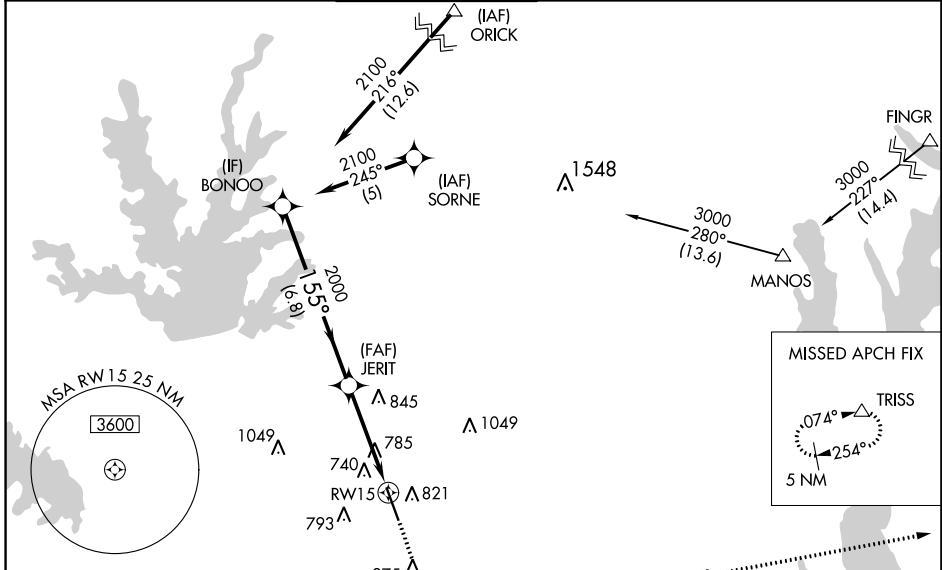
▼ When local altimeter setting not received, use Dallas-Love Field altimeter setting and increase all DA 39 feet and MDA 40 feet, increase LNAV/VNAV all Cats visibility and Circling Cat C visibility 1/4 SM. Inoperative table does not apply to LPV all Cats and LNAV Cats A/B. Baro-VNAV NA when using Dallas Love Field altimeter setting. For uncompensated Baro-VNAV systems, LNAV/VNAV NA below -16°C (4°F) or above 47°C (117°F). DME/DME RNP-0.3 NA. Helicopter visibility reduction below 1 SM NA. For inoperative MALSR increase LNAV Cat C visibility to 1/4.

MALSR

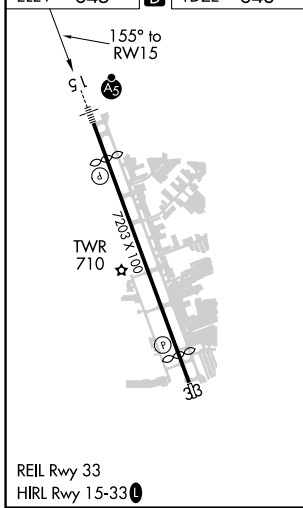


MISSED APPROACH:
Climb to 3000 direct VEYXE and via 074° track to TRISS and hold.

ATIS 133.4	REGIONAL APP CON 124.3 282.275	ADDISON TOWER ★ 126.0 (CTAF) 239.0	GND CON 121.6	CLNC DEL 119.55	UNICOM 122.95
----------------------	--	--	-------------------------	---------------------------	-------------------------



ELEV	645	D	TDZE	643
------	------------	----------	------	------------



Procedure	BONOO	3000	VEYXE	TRISS
Turn	NA	↑	✧	tr △
Angle	155°		074°	
GP	3.00°			
TCH	52'			
Distances	6.8 NM	4.1 NM		
CATEGORY	A	B	C	D
LPV DA		943-1	300 (300-1)	
LNAV/VNAV DA		1076-1	433 (500-1)	
LNAV MDA		1100-1	457 (500-1)	
CIRCLING	1200-1	555 (600-1)	1280-1 3/4 635 (700-1 3/4)	1400-2 1/2 755 (800-2 1/2)

SC-2, 28 JAN 2021 to 25 FEB 2021

SC-2, 28 JAN 2021 to 25 FEB 2021