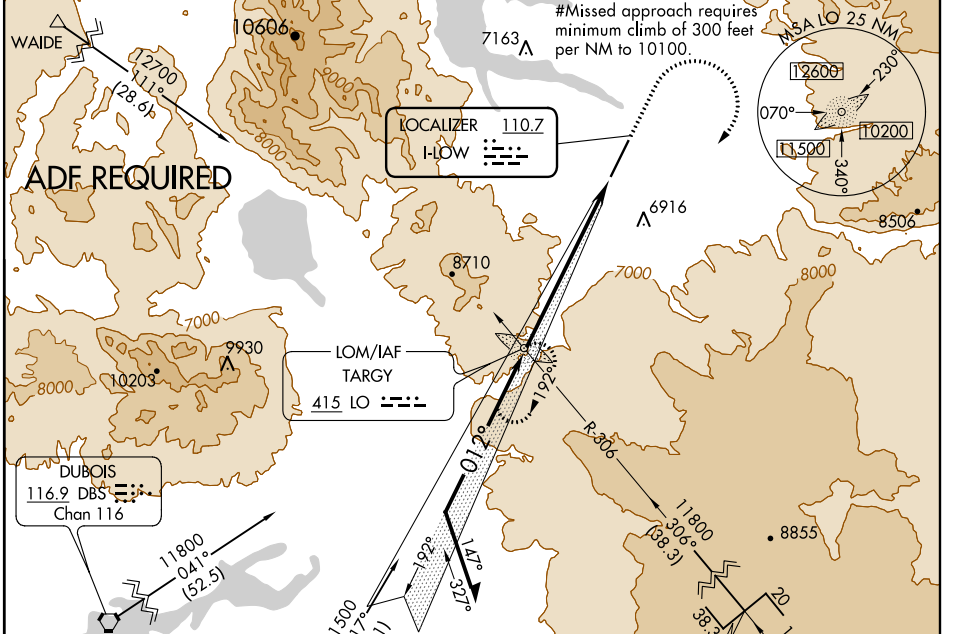


LOC I-LOW <b>110.7</b>	APP CRS <b>012°</b>	Rwy Idg TDZE Apt Elev	<b>8399</b> <b>6649</b> <b>6649</b>
---------------------------	------------------------	-----------------------------	---

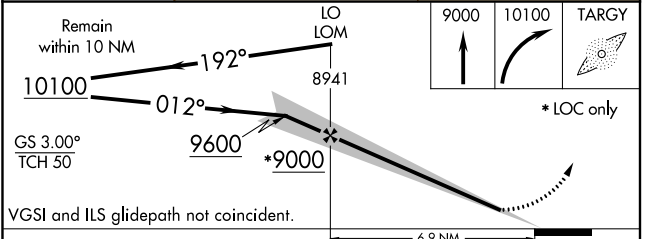
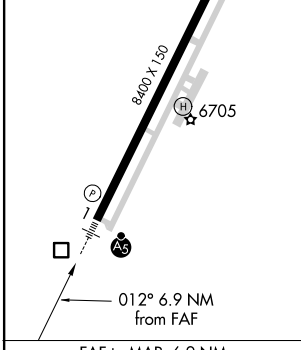
# ILS or LOC RWY 1 YELLOWSTONE (WYS)

<p>▼ ▲ NA -19°C</p> <p>Obtain local altimeter setting on CTAF, when not received procedure NA. Inoperative table does not apply to S-LOC 1 Cat A. ADF required. For inoperative MALSR, increase S-ILS 1 all Cats visibility to 2 3/4 mile.</p>	<p>MALSR</p> <p>MISSED APPROACH: Climb to 9000, then climbing right turn to 10100 direct TARGY LOM and hold.</p>
--	--

AWOS-3P <b>118.1</b>	SALT LAKE CENTER <b>132.4 338.3</b>	UNICOM <b>123.0 (CTAF) 0</b>
-------------------------	--	---------------------------------



ELEV 6649	D	TDZE 6649
HIRL Rwy 1-19		REL Rwy 19



CATEGORY	A	B	C	D
S-ILS 1#		6849-1/2	200 (200-1/2)	
S-ILS 1		7449-2 1/4	800 (800-2 1/4)	
S-LOC 1	7780-1 1/4 1131 (1200-1 1/4)	7780-1 1131 (1200-1)	7780-2 1/2 1131 (1200-2 1/2)	
CIRCLING	7780-1 1/4 1131 (1200-1 1/4)	7780-1 1/2 1131 (1200-1 1/2)	7780-3 1131 (1200-3)	8020-3 1371 (1400-3)

NW-1, 28 JAN 2021 to 25 FEB 2021

NW-1, 28 JAN 2021 to 25 FEB 2021