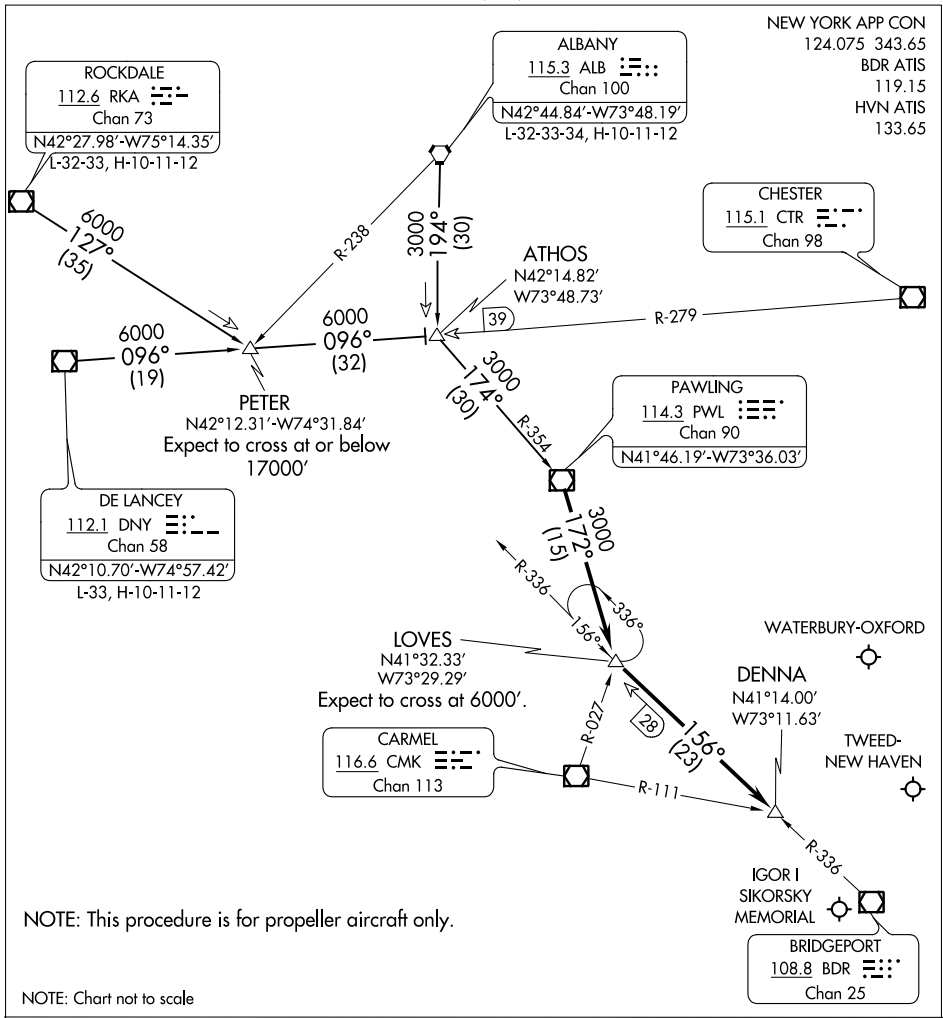


DENNA TWO ARRIVAL

AL-621 (FAA)

BRIDGEPORT, CONNECTICUT



NE-1, 28 JAN 2021 to 25 FEB 2021

NE-1, 28 JAN 2021 to 25 FEB 2021

DENNA TWO ARRIVAL

BRIDGEPORT, CONNECTICUT

ALBANY TRANSITION (ALB.DENNA2): From over ALB VORTAC via ALB R-194 to ATHOS INT, then via PWL R-354 to PWL VOR/DME. Thence....

DELANCEY TRANSITION (DNY.DENNA2): From over DNY VOR/DME via DNY R-096 to ATHOS INT, then via PWL R-354 to PWL VOR/DME. Thence....

ROCKDALE TRANSITION (RKA.DENNA2): From over RKA VOR/DME via RKA R-127 to PETER INT, then via DNY R-096 to ATHOS INT, then via PWL R-354 to PWL VOR/DME. Thence....

....From over PWL VOR/DME via PWL R-172 to LOVES INT. Then via BDR R-336 to DENNA INT. Expect radar vectors to final approach course.