

# TUCSON EIGHT DEPARTURE

AL-430 (FAA)

TUCSON INTL (TUS)  
TUCSON, ARIZONA

ATIS  
123.8 279.65  
CLNC DEL  
126.65 326.2  
GND CON  
124.4 348.6  
TUCSON TOWER  
118.3 257.8  
TUCSON DEP CON  
125.1 269.55

**TAKEOFF MINIMUMS.**  
Rwys 3, 11L/R, 29L/R: Standard with minimum climb of 400' per NM to 9900'.  
Rwy 21: Standard with minimum climb of 380' per NM to 9900'.

NOTE: DME required.

NOTE: During RADAR operations aircraft will receive RADAR vectors to appropriate transition.

NOTE: All Rwys: GILA BEND TRANSITION requires minimum climb of 405' per NM to 15000'.

**PHOENIX**  
115.6 PXR  
Chan 103  
N33°25.98'-W111°58.21'  
L-5, H-4

**BBALL**  
N32°57.95'  
W111°29.36'

**BAYBI**  
N32°45.95'  
W111°05.84'

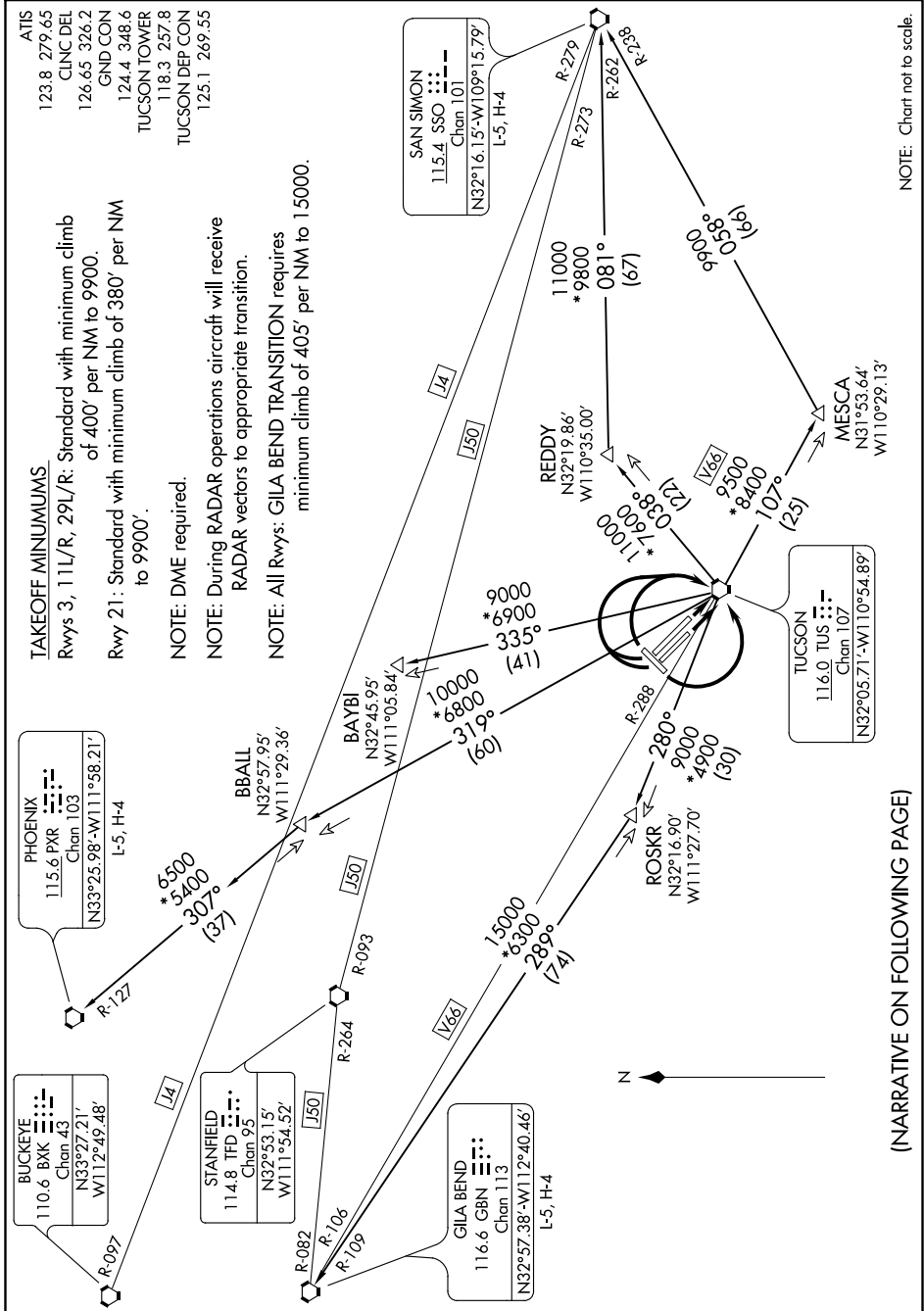
**BUCKEYE**  
110.6 BXX  
Chan 43  
N33°27.21'  
W112°49.48'

**STANFIELD**  
114.8 TFD  
Chan 95  
N32°53.15'  
W111°54.52'

**GILA BEND**  
116.6 GBN  
Chan 113  
N32°57.38'-W112°40.46'  
L-5, H-4

**TUCSON**  
116.0 TUS  
Chan 107  
N32°05.71'-W110°54.89'

**SAN SIMON**  
115.4 SSO  
Chan 101  
N32°16.15'-W109°15.79'  
L-5, H-4



NOTE: Chart not to scale.

(NARRATIVE ON FOLLOWING PAGE)

# TUCSON EIGHT DEPARTURE

TUCSON, ARIZONA  
TUCSON INTL (TUS)