

LOC/DME I-TUS <b>111.7</b> Chan <b>54</b>	APP CRS <b>123°</b>	Rwy Idg <b>10996</b> TDZE <b>2599</b> Apt Elev <b>2643</b>
-------------------------------------------------	------------------------	------------------------------------------------------------------

# ILS or LOC RWY 11L

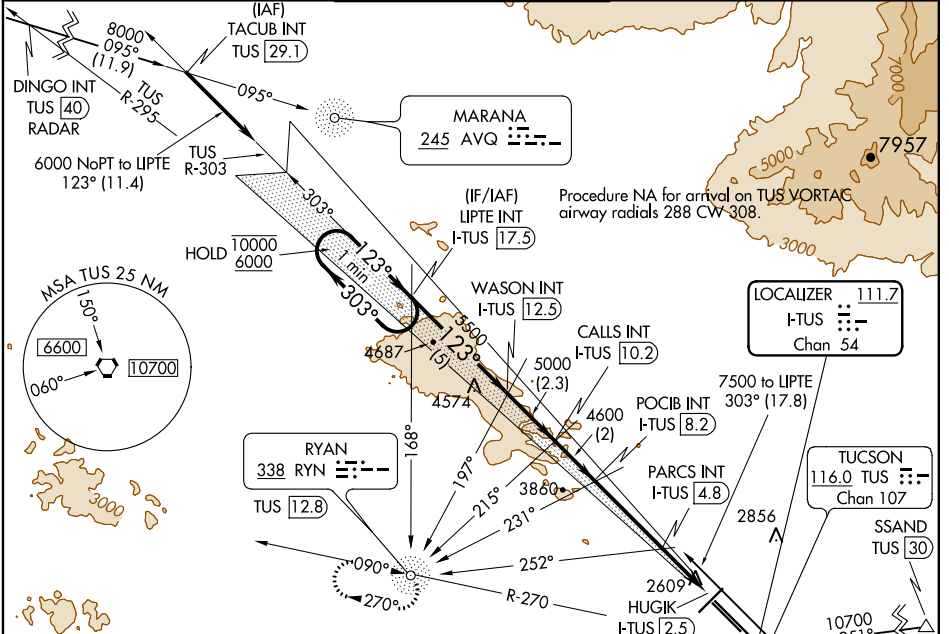
TUCSON INTL (TUS)

ADF or RADAR required for arrivals at DINGO.  
ADF or DME required.  
DME required for arrivals at SSAND.

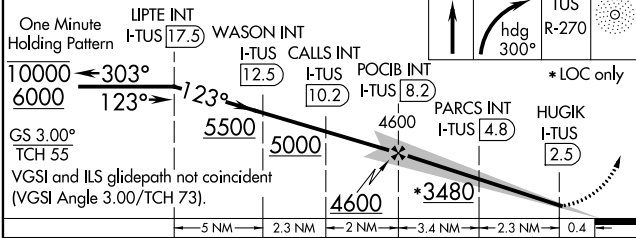
MALS R (AS) MISSED APPROACH: Climb to 4000 then climbing right turn to 6000 on heading 300° and TUS VORTAC R-270 to RYN NDB/TUS 12.8 DME and hold.

For inop ALS, increase S-ILS Cat E visibility to RVR 4000, S-LOC 11L Cat E visibility to 2½ SM; PARCS FIX MINIMUMS: S-LOC 11L Cat C/D/E visibility to RVR 5500.

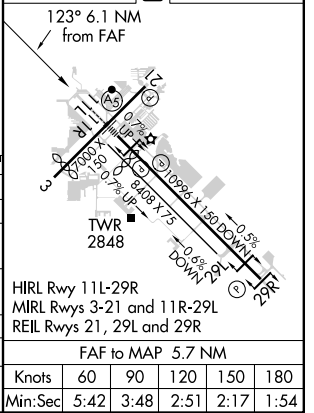
ATIS <b>123.8 279.65</b>	TUCSON APP CON <b>119.4 318.1</b>	TUCSON TOWER <b>118.3 257.8</b>	GND CON <b>124.4 348.6</b>	CLNC DEL <b>126.65 326.2</b>
-----------------------------	--------------------------------------	------------------------------------	-------------------------------	---------------------------------



Use I-TUS DME when on the localizer course.



ELEV 2643	TDZE 2599
-----------	-----------



CATEGORY	A	B	C	D	E
S-ILS 11L	2800/24 201 (200-½)				
S-LOC 11L	3480/40	881 (900-¾)	3480-2	881 (900-2)	
CIRCLING	3480-1¼	837 (900-1¼)	3480-2½ 837 (900-2½)	3480-2¾ 837 (900-2¾)	3800-3 1157 (1200-3)
PARCS FIX MINIMUMS					
S-LOC 11L	2960/24	361 (400-½)	2960/40	361 (400-¾)	
CIRCLING	3160-1 517 (600-1)	3220-1 577 (600-1)	3220-1½ 577 (600-1½)	3220-2 577 (600-2)	3800-3 1157 (1200-3)

HIRL Rwy 11L-29R	MIRL Rwy 3-21 and 11R-29L	REIL Rwy 21, 29L and 29R			
FAF to MAP 5.7 NM					
Knots	60	90	120	150	180
Min:Sec	5:42	3:48	2:51	2:17	1:54

SW-4, 28 JAN 2021 to 25 FEB 2021

SW-4, 28 JAN 2021 to 25 FEB 2021