

LOC/DME I-SCK <b>109.1</b> Chan 28	APP CRS <b>294°</b>	Rwy Idg TDZE Apt Elev	<b>8650</b> <b>32</b> <b>33</b>
--	------------------------	-----------------------------	---------------------------------------

# ILS RWY 29R (SA CAT II)

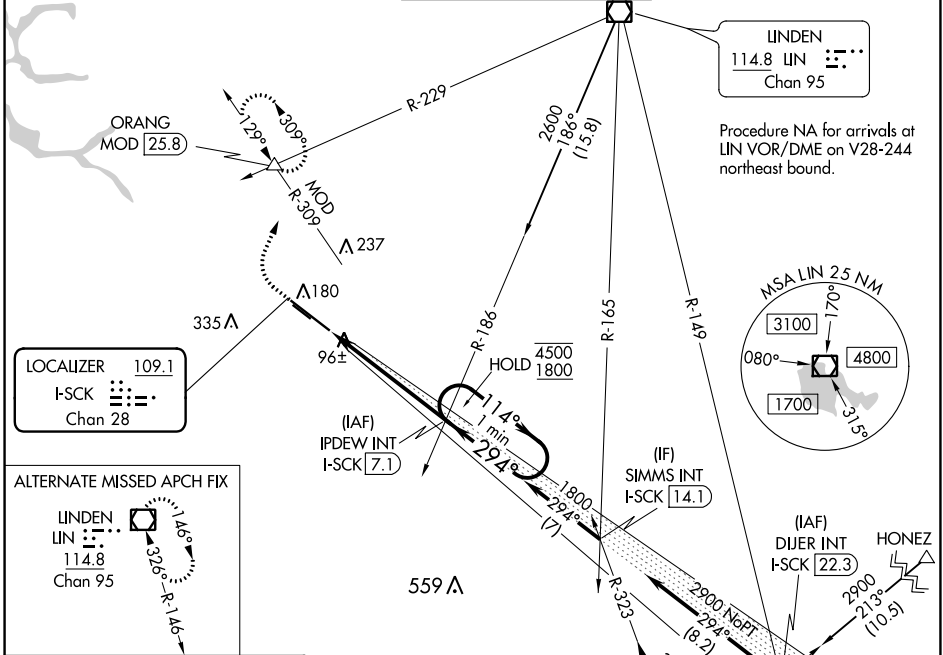
## STOCKTON METROPOLITAN (SCK)

**Reduced lighting: requires specific OPSPEC, MSPEC, or LOA approval and use of autoland or HUD to touchdown. Procedure NA when tower closed.**



**MISSED APPROACH:** Climb to 500 then climbing right turn to 2000 on heading 010° and MOD VOR/DME R-309 to ORANG INT/MOD 25.8 DME and hold.

ATIS <b>118.25</b>	NORCAL APP CON (SE-NW) <b>123.85 278.3</b> (N-SE) <b>125.1 363.2</b>	STOCKTON TOWER ★ <b>120.3 (CTAF) 0 239.0</b>	GND CON <b>121.9</b>	UNICOM <b>122.95</b>
-----------------------	--	---	-------------------------	-------------------------



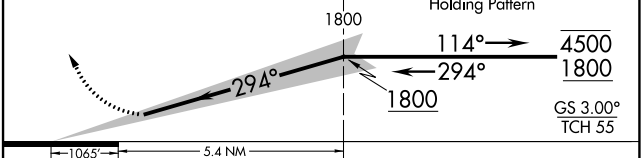
ELEV 33	<b>D</b>	TDZE 32
---------	----------	---------

**ALTERNATE MISSED APCH FIX**

LINDEN  
LIN 114.8  
Chan 95

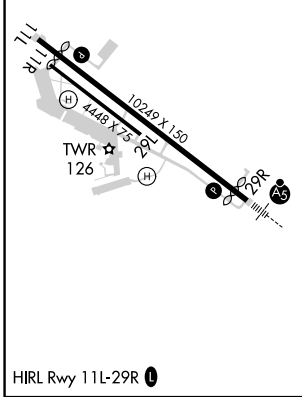
LOCALIZER 109.1  
I-SCK  
Chan 28

500	2000	ORANG	VGSI and ILS glidepath not coincident (VGSI Angle 3.00/TCH 71).
↑	hdg 010°	MOD R-309	One Minute Holding Pattern



CATEGORY	A	B	C	D
S-ILS 29R		RA 105/12	100 DA 132	

**SA CATEGORY II ILS - SPECIAL AIRCREW & AIRCRAFT CERTIFICATION REQUIRED**



SW-2, 28 JAN 2021 to 25 FEB 2021

SW-2, 28 JAN 2021 to 25 FEB 2021