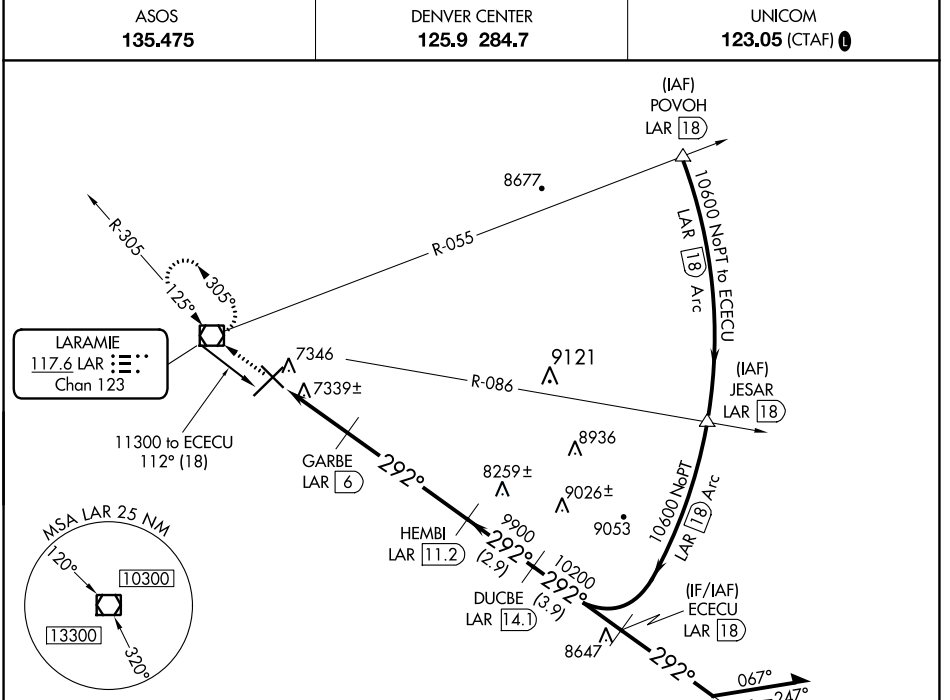


VOR/DME LAR 117.6 Chan 123	APP CRS 292°	Rwy Idg TDZE Apt Elev 6300 7278 7284
---	------------------------	--

VOR/DME RWY 30

LARAMIE RGNL (L.A.R.)

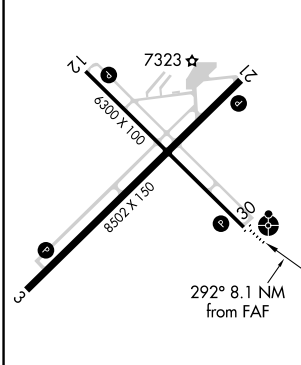
-35°C	ODALS 	MISSED APPROACH: Climb to 9600 direct LAR VOR/DME and hold, continue climb-in-hold to 9600.
	ASOS 135.475	DENVER CENTER 125.9 284.7



NW-1, 28 JAN 2021 to 25 FEB 2021

NW-1, 28 JAN 2021 to 25 FEB 2021

ELEV 7284	D	TDZE 7278
-----------	----------	-----------



REIL Rws 3, 12 and 21
MIRL Rws 3-21 and 12-30

9600	LAR	ECECU LAR 18	Remain within 10 NM
GARBE LAR 6 HEMBI LAR 11.2 DUCBE LAR 14.1	LAR 4 LAR 3.1	10600 10200 9900	112° 292° 292°
0.9	2 NM	5.2 NM	2.9 NM
CATEGORY	A	B	C
S-30	7600-¾	322 (400-¾)	7600-1 322 (400-1)
CIRCLING	7660-1 376 (400-1)	7740-1 456 (500-1)	7740-1½ 456 (500-1½) 7840-2 556 (600-2)