

WAAS CH 70600 W12A	APP CRS 122°	Rwy Idg TDZE Apt Elev	6300 7275 7284
--	------------------------	-----------------------------	---

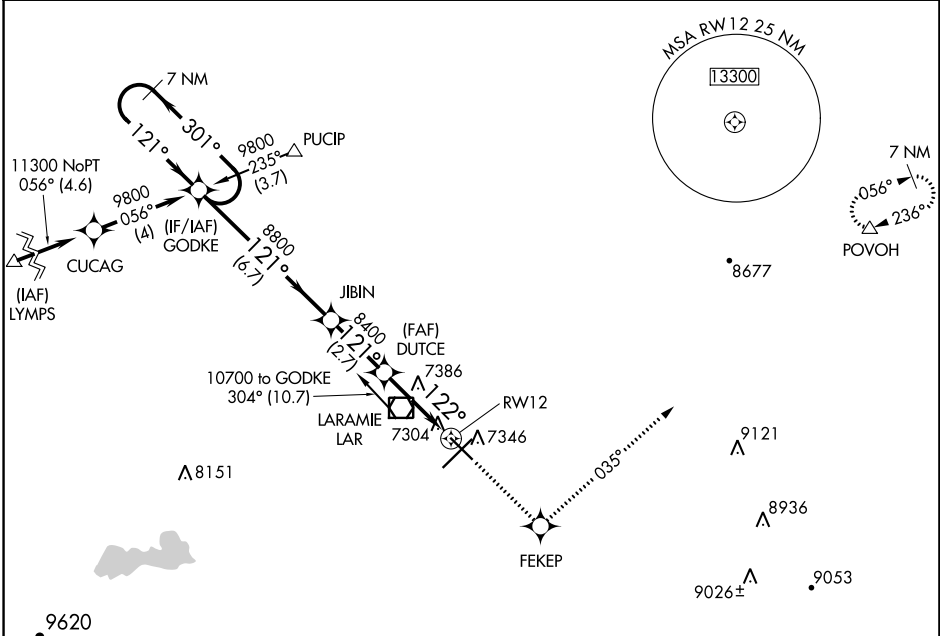
RNAV (GPS) RWY 12

LARAMIE RGNL (L.A.R.)

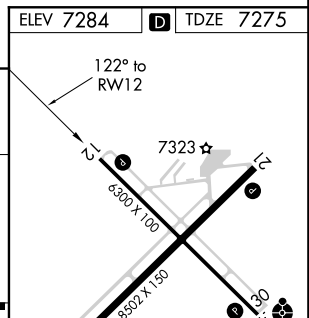
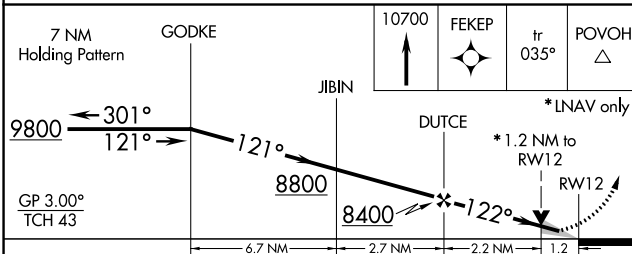
DME/DME RNP-0.3 NA.
 For uncompensated Baro-VNAV systems, LNAV/VNAV
 NA below -29°C (-20°F) or above 34°C (93°F).

MISSED APPROACH: Climb to 10700 direct FEKEP
 and via 035° track to POVOH and hold.

ASOS 135.475	DENVER CENTER 125.9 284.7	UNICOM 123.05 (CTAF) 0
------------------------	-------------------------------------	---



ELEV 7284	D TDZE 7275
------------------	---------------------------



CATEGORY	A	B	C	D
LPV DA	7525-1		250 (300-1)	
LNAV/VNAV DA	7622-1¼		347 (400-1¼)	
LNAV MDA	7700-1	425 (500-1)	7700-1¼	425 (500-1¼)
CIRCLING	7700-1¼ 416 (500-1¼)	7740-1¼ 456 (500-1¼)	7740-1½ 456 (500-1½)	7840-2 556 (600-2)

REIL Rwy 3, 12 and 21 **0**
 MIRL Rwy 3-21 and 12-30 **0**

NW-1, 28 JAN 2021 to 25 FEB 2021

NW-1, 28 JAN 2021 to 25 FEB 2021