

WAAS CH 50413 W24A	APP CRS 238°	Rwy Idg TDZE Apt Elev	5002 857 861
--	------------------------	-----------------------------	---

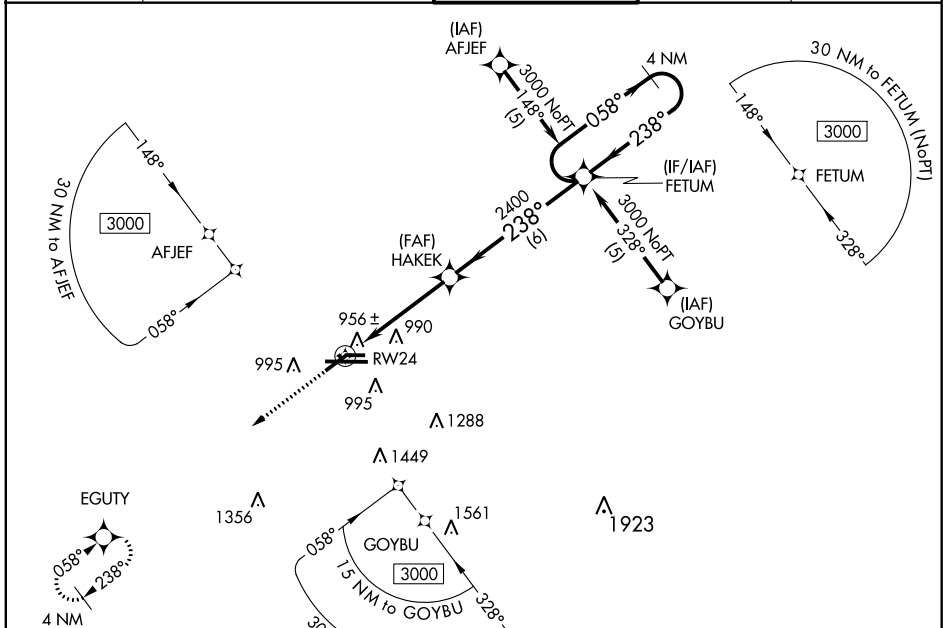
RNAV (GPS) RWY 24

CAPITAL REGION INTL (LAN)

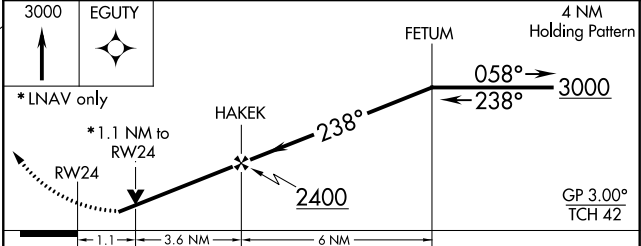
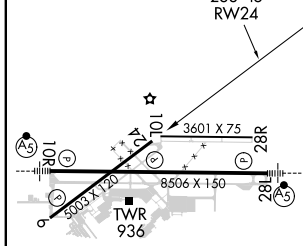
W For uncompensated Baro-VNAV systems, LNAV/VNAV NA below -16°C (4°F) or above 47°C (116°F). DME/DME RNP-0.3 NA. Visibility reduction by helicopters NA.

MISSED APPROACH: Climb to 3000 direct EGTU and hold.

ATIS 119.75	GREAT LAKES APP CON * 118.65 226.4	LANSING TOWER 119.9 240.9	GND CON 121.9	CLNC DEL 123.675
-----------------------	--	-------------------------------------	-------------------------	----------------------------



ELEV 861	D	TDZE 857
----------	----------	----------



CATEGORY	A	B	C	D
LPV DA		1215-1¼	358 (400-1¼)	
LNAV/VNAV DA		1254-1½	397 (400-1½)	
LNAV MDA	1240-1	383 (400-1)		1240-1¼ 383 (400-1¼)
CIRCLING	1380-1	519 (600-1)	1380-1½ 519 (600-1½)	1440-2 579 (600-2)

REIL Rwy 6 and 24
HIRL Rwy 10R-28L
MIRL Rwy 6-24 and 10L-28R

EC-1, 28 JAN 2021 to 25 FEB 2021

EC-1, 28 JAN 2021 to 25 FEB 2021