

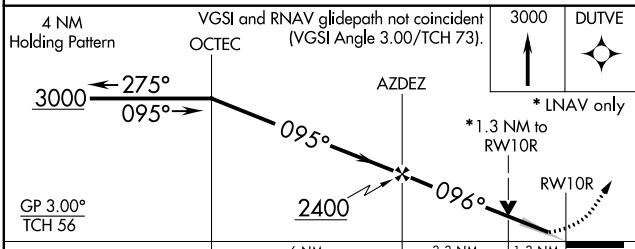
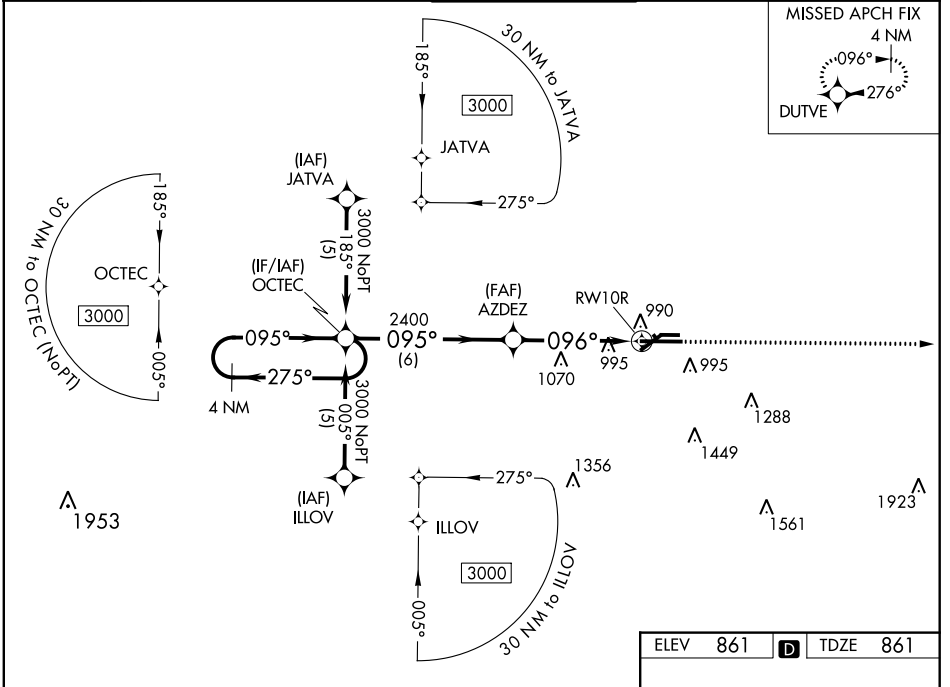
WAAS CH 61314 W10A	APP CRS 096°	Rwy Idg TDZE Apt Elev	8506 861 861
--	------------------------	-----------------------------	---

RNAV (GPS) RWY 10R

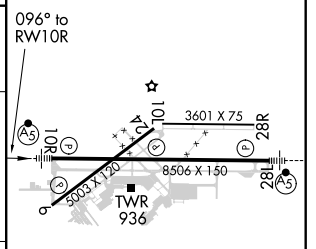
CAPITAL REGION INTL (L.A.N)

<p>For uncompensated Baro-VNAV systems, LNAV/VNAV NA below -16°C (4°F) or above 47°C (116°F). DME/DME RNP-0.3 NA. **RVR 1800 authorized with use of FD or AP or HUD to DA.</p>	<p>MALSR</p>	<p>MISSED APPROACH: Climb to 3000 direct DUTVE and hold.</p>
	<p>ATIS 119.75</p> <p>GREAT LAKES APP CON * 118.65 226.4</p> <p>LANSING TOWER 119.9 240.9</p> <p>GND CON 121.9</p> <p>CLNC DEL 123.675</p>	

ATIS 119.75	GREAT LAKES APP CON * 118.65 226.4	LANSING TOWER 119.9 240.9	GND CON 121.9	CLNC DEL 123.675
-----------------------	--	-------------------------------------	-------------------------	----------------------------



ELEV	861	D	TDZE	861
------	-----	---	------	-----



CATEGORY	A	B	C	D
LPV DA**	1061/24		200 (200-½)	
LNAV/VNAV DA	1290/50		429 (500-1)	
LNAV MDA	1320/24	459 (500-½)	1320/40 459 (500-¾)	1320/50 459 (500-1)
CIRCLING	1380-1	519 (600-1)	1380-1½ 519 (600-1½)	1440-2 579 (600-2)

REIL Rwy 6 and 24
HIRL Rwy 10R-28L
MIRL Rwy 6-24 and 10L-28R

EC-1, 28 JAN 2021 to 25 FEB 2021

EC-1, 28 JAN 2021 to 25 FEB 2021