

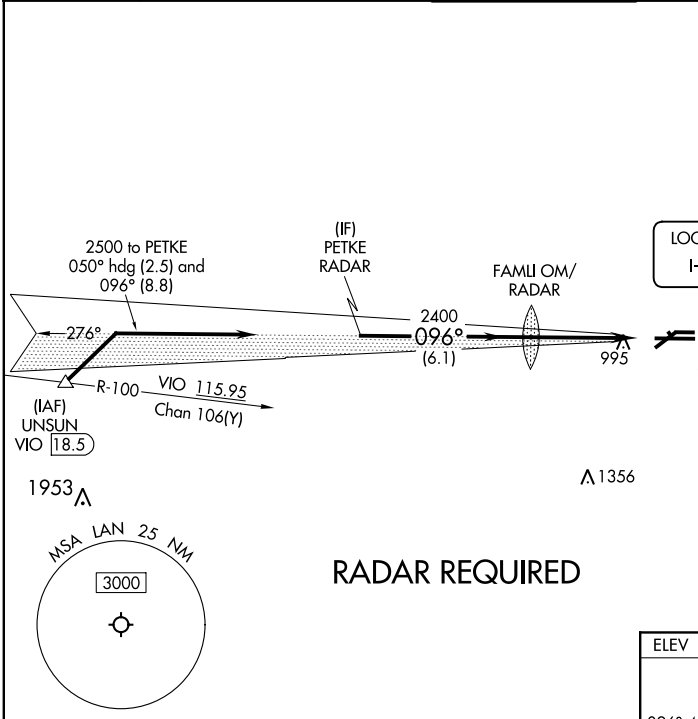
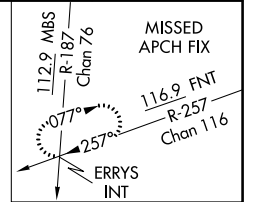
LOC I-CPQ 111.7	APP CRS 096°	Rwy Idg TDZE Apt Elev	8506 861 861
---------------------------	------------------------	-----------------------------	---

ILS or LOC RWY 10R

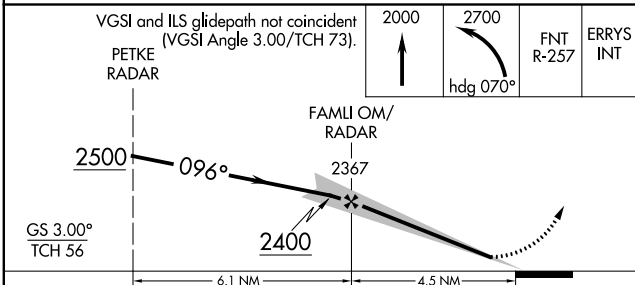
CAPITAL REGION INTL (LAN)

<p>Circling Rwy 10L, 28R NA at night. ** RVR 1800 authorized with use of FD or AP or HUD to DA.</p>	<p>MALS</p>	<p>MISSED APPROACH: Climb to 2000 then climbing left turn to 2700 on heading 070° and on FNT VORTAC R-257 to ERRYS INT and hold.</p>		
			<p>ATIS 119.75</p>	<p>GREAT LAKES APP CON *</p> <p>118.65 226.4</p>

ATIS 119.75	GREAT LAKES APP CON * 118.65 226.4	LANSING TOWER 119.9 240.9	GND CON 121.9	CLNC DEL 123.675
-----------------------	--	-------------------------------------	-------------------------	----------------------------



RADAR REQUIRED



ELEV 861	D	TDZE 861
----------	----------	----------

REIL Rws 6 and 24	HIRL Rwy 10R-28L
MIRL Rws 6-24 and 10L-28R	FAF to MAP 4.5 NM
Knots	60 90 120 150 180
Min:Sec	4:30 3:00 2:15 1:48 1:30

CATEGORY	A	B	C	D
S-ILS 10R**	1061/24		200 (200-½)	
S-LOC 10R	1340/24	479 (500-½)	1340/50	479 (500-1)
C CIRCLING	1380-1	519 (600-1)	1600-2 739 (800-2)	1760-3 899 (900-3)

EC-1, 28 JAN 2021 to 25 FEB 2021

EC-1, 28 JAN 2021 to 25 FEB 2021