

WAAS CH <b>62830</b> <b>W14A</b>	APP CRS <b>137°</b>	Rwy Idg TDZE Apt Elev	<b>6236</b> <b>2608</b> <b>2613</b>
--	------------------------	-----------------------------	---

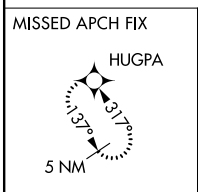
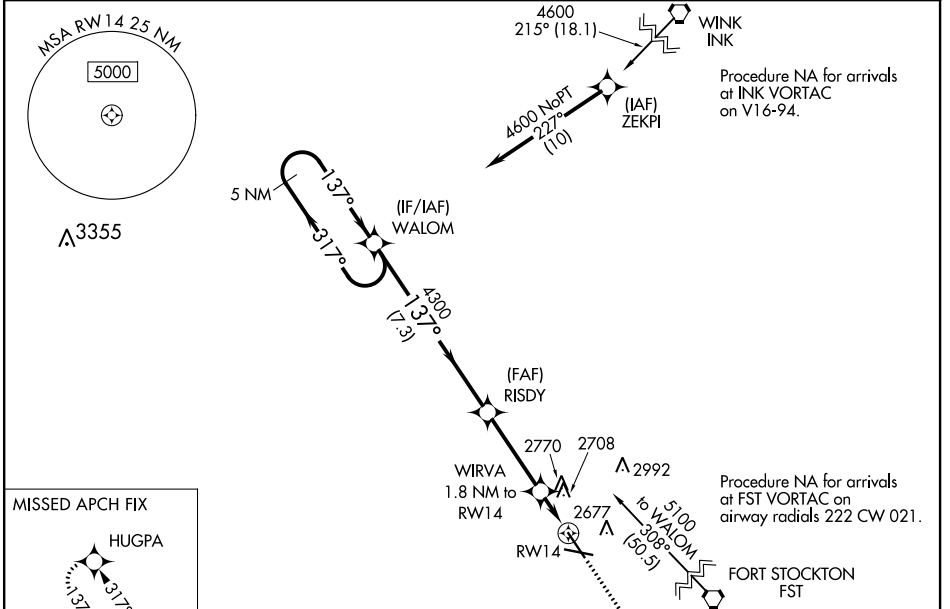
# RNAV (GPS) RWY 14

PECOS MUNI (PEQ)

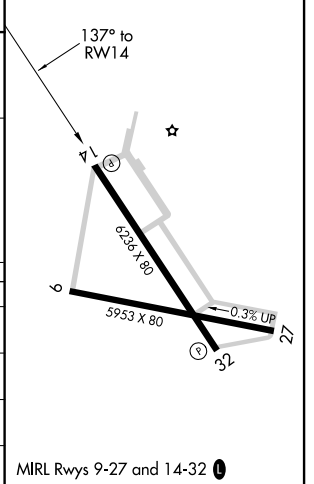
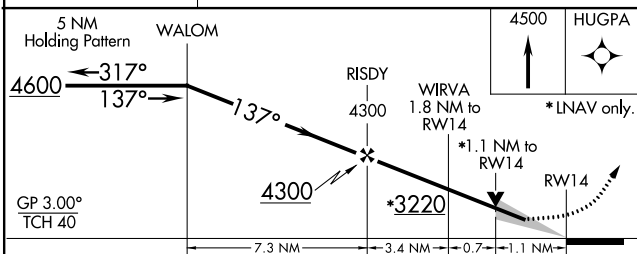
**⚠** For uncompensated Baro-VNAV systems, LNAV/VNAV NA below -20°C (-4°F) or above 27°C (80°F).  
**⚠** DME/DME RNP-0.3 NA. VDP and Baro-VNAV NA with Wink altimeter setting. When local altimeter setting not received, use Wink altimeter setting and increase all DA 95 feet and all MDA 100 feet, increase LPV all Cats visibility ¼ mile, LNAV/VNAV all Cats visibility ⅓ mile, LNAV Cat C/D and Circling Cat C visibility ¼ mile. Circling to Rwy 9/27 NA at night.

**MISSED APPROACH:**  
 Climb to 4500 direct HUGPA and hold.

AWOS-3 <b>118.175</b>	ALBUQUERQUE CENTER <b>135.875 292.15</b>	UNICOM <b>122.8 (CTAF) 0</b>
--------------------------	---	---------------------------------



ELEV	2613	TDZE	2608
------	------	------	------



CATEGORY	A	B	C	D
LPV DA		2808-¾	200 (200-¾)	
LNAV/VNAV DA		2900-1	292 (300-1)	
LNAV MDA	3000-1	392 (400-1)	3000-1½	392 (400-1½)
CIRCLING	3080-1	467 (500-1)	3120-1½ 507 (600-1½)	3180-2 567 (600-2)

MIRL Rwy 9-27 and 14-32 0