

TACAN CZQ Chan <b>76</b> <b>(112.9)</b>	APP CRS <b>131°</b>	Rwy Idg TDZE Apt Elev	11L <b>9279</b> <b>336</b> <b>336</b>	11R <b>8008</b> <b>333</b> <b>336</b>
---	------------------------	-----------------------------	--	--

# TACAN RWY 11L

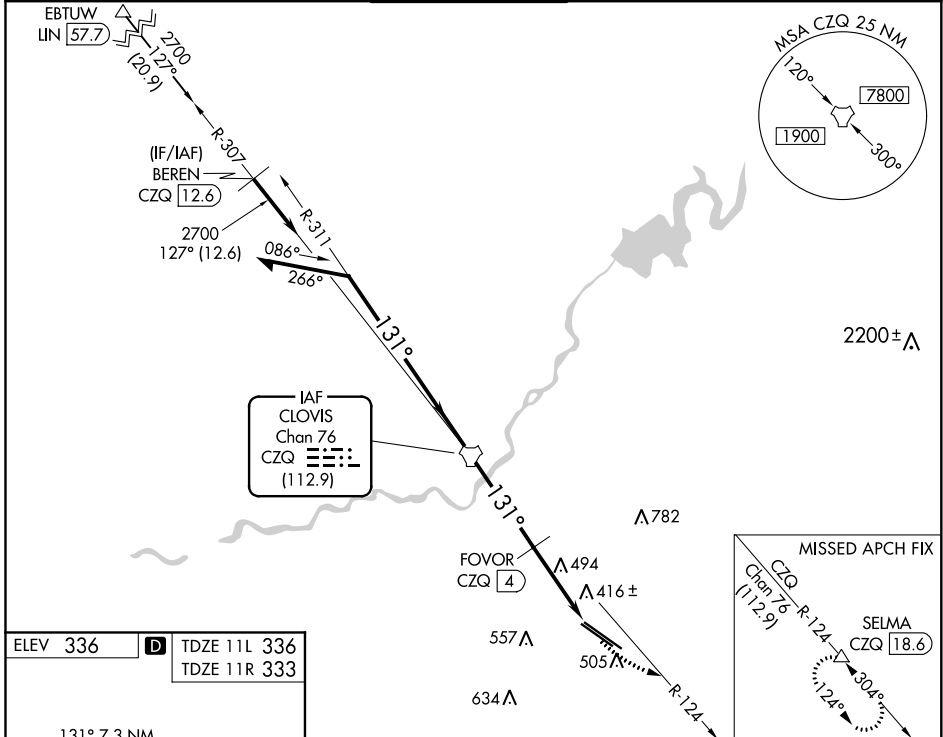
FRESNO YOSEMITE INTL (FAT)

DME required.

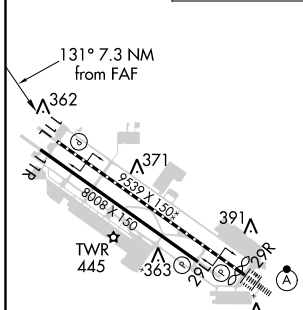
**▼** Rwy 11L helicopter visibility reduction below 3/4 SM NA.

**▲** MISSED APPROACH: Climbing left turn to 2000 on CZQ TACAN R-124 to SELMA/CZQ 18.6 DME and hold.

ATIS <b>121.35 273.6</b>	FRESNO APP CON <b>119.6 351.95</b>	FRESNO TOWER <b>118.2 251.1</b>	GND CON <b>121.7 348.6</b>	CLNC DEL <b>124.35 348.6</b>
-----------------------------	---------------------------------------	------------------------------------	-------------------------------	---------------------------------



ELEV 336	<b>D</b> TDZE 11L 336
	TDZE 11R 333



REIL Rws 11L and 11R					
HIRL Rwy 11L-29R					
MIRL Rwy 11R-29L					
TDZ/CL Rwy 29R					
Remain within 15 NM					
CZQ TACAN					
FOVOR CZQ 4					
2700 131°					
2700 131°					
1420 131°					
4 NM					
2.1 NM					
1.2 NM					
2000 SELMA CZQ R-124					
CZQ 6.1					
CZQ 7.3					
3.00° TCH 50					
CATEGORY	A	B	C	D	E
S-11L	760/55	424 (500-1)	760-1 1/4	424 (500-1 1/4)	
SIDESTEP 11R	760-1	427 (500-1)	760-1 1/2 427 (500-1 1/2)	760-2 427 (500-2)	
<b>C</b> CIRCLING	820-1	484 (500-1)	920-1 1/2 584 (600-1 1/2)	920-2 584 (600-2)	1140-2 3/4 804 (900-2 3/4)

SW-2, 28 JAN 2021 to 25 FEB 2021

SW-2, 28 JAN 2021 to 25 FEB 2021